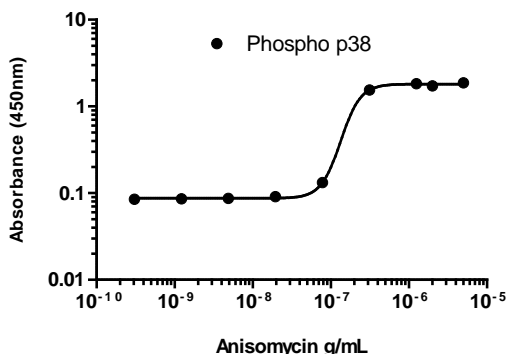


## phospho-p38 MAPK (Thr180/Tyr182) InstantOne ELISA™ Kit

Catalog Number: 85-86022

Also known as: SAPK2A, MAPK14

RUO: For Research Use Only. Not for use in diagnostic procedures.



Lysates from HeLa cells treated with a dose response of anisomycin for 30 min were analysed for Phospho (Thr180/Tyr182) by InstantOne ELISA™.

### Product Information

**Contents:** phospho-p38 MAPK (Thr180/Tyr182) InstantOne ELISA™



**Catalog Number:** 85-86022



**Temperature Limitation:** Store at 2-8°C.



**Batch Code:** Refer to vial



**Use By:** Refer to vial

### Description

The InstantOne ELISA™ is specifically engineered for accurate measurement of phosphorylated human and mouse p38 MAPK in cell lysates. Detection of rat p38 MAPK is expected. The InstantOne ELISA™ kit allows for fast analysis of samples in approximately one hour. All reagents used in a traditional sandwich ELISA are added in solution to a plate followed by a wash step and detection with the TMB colorimetric substrate.

p38 MAPKs, also known as the Stress-Activated Protein Kinases (SAPKs), are a sub-family of the JNK/SAP family of MAP Kinases. There are four isoforms of p38 MAPK, denoted alpha (SAPK2A), beta (SAPK2B), gamma (SAPK3b) and delta (SAPK4). Like ERK and JNK, p38 MAP Kinases are activated via phosphorylation of the TxY motif that corresponds to Thr180/Tyr182 for p38alpha. p38 is activated by MEK3 and MKK6 in response to cellular stresses, most notably inflammatory cytokines, irradiation, UV light, osmotic shock, lipopolysaccharides, and toxins such as anisomycin. Once activated, p38 phosphorylates numerous targets, including the transcription factors ATF2 and ELK1 and kinases such as MAPKAPK2. Thus, p38 plays a critical role in the production of cytokines including IL-6, inflammation, cancer, and neurodegenerative diseases.

### Components

User Manual

- phospho-p38 MAPK (Thr180/Tyr182) Capture Antibody Reagent (Part No. IOPP38CAR1) - 3 mL
- phospho-p38 MAPK (Thr180/Tyr182) Detection Antibody Reagent (Part No. IOPP38DAR1) - 3 mL
- InstantOne™ Assay Plate (Part No. IOAP96) - 96 well (sealed)
- Cell Lysis Buffer (5X) (Part No. IOCLB1) - 12 mL
- Enhancer Solution (Part No. IOES1) - 1 mL
- Wash Buffer (10X) (Part No. IOWB1) - 15 mL
- Detection Reagent (TMB Substrate) (Part No. IODR1) - 12 mL
- Stop Solution (Part No. IOSS1) - 12 mL
- Positive Control Cell Lysate (lyophilized) (Part No. IOP38PC1) – 0.25 mL
- Plate seal - 1 ea

### Applications Tested

This assay has been validated by ELISA for the detection of phospho human p38 MAPK (Thr180/Tyr182) in stimulated HeLa and HEK293 cell lysates.

---

## phospho-p38 MAPK (Thr180/Tyr182) InstantOne ELISA™ Kit

**Catalog Number:** 85-86022

**Also known as:** SAPK2A, MAPK14

**RUO: For Research Use Only. Not for use in diagnostic procedures.**

---

### Related Products

14-0031 Anti-Mouse CD3e Purified (145-2C11)

85-86195 MAPK Family (ERK, p38, JNK) Activation InstantOne ELISA™

85-86198 JNK (Total/Phospho) InstantOne ELISA™

IOCLB InstantOne ELISA Cell Lysis Buffer (5X) – 100 mL

IOES InstantOne ELISA Enhancer Solution – 100 mL

IOWB InstantOne ELISA Wash Buffer (10X) – 500 mL