

beta Tubulin Loading Control Monoclonal Antibody (BT7R), DyLight 680

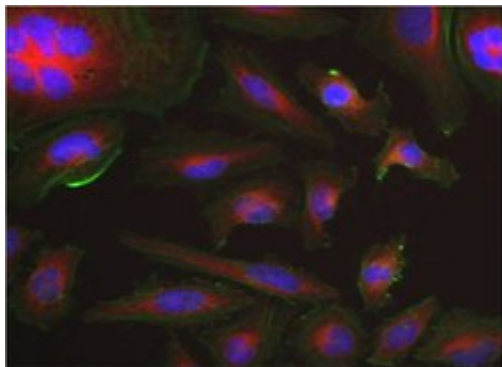
Product Details	
Size	50 µL
Species Reactivity	Dog, Chicken, Human, Mouse, Non-human primate, Rabbit, Rat
Host/Isotype	Mouse / IgG2a
Class	Monoclonal
Type	Antibody
Clone	BT7R
Conjugate	DyLight® 680
Immunogen	KLH conjugated peptide of the N-terminus of Beta-Tubulin.
Form	Liquid
Concentration	1 mg/mL
Purification	Protein A
Storage buffer	PBS with proprietary stabilizer
Contains	0.02% sodium azide
Storage conditions	4° C, do not freeze
RRID	AB_2537825

Applications	Tested Dilution	Publications
Western Blot (WB)	1 µg/mL	-
Immunocytochemistry (ICC/IF)	1:25-1:100	-

Product Specific Information

MA5-16308-D680 has successfully been used in immunofluorescence and Western blot applications. DyLight 680 has an excitation/emission of 692/712 nm.

Product Images For beta Tubulin Loading Control Monoclonal Antibody (BT7R), DyLight 680

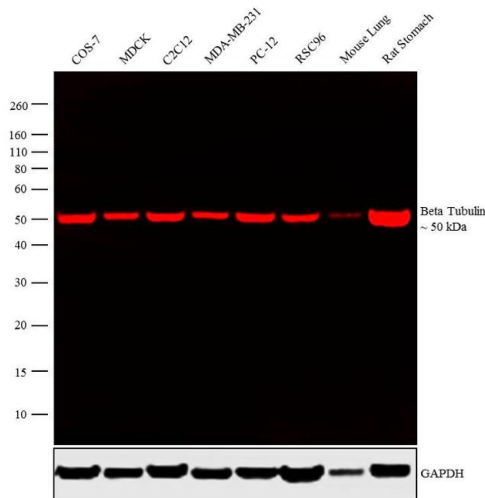


beta Tubulin Loading Control Antibody (MA5-16308-D680) in ICC/IF

Immunofluorescent analysis of Beta-Tubulin (red) in HeLa cells. Formalin fixed cells were permeabilized with 0.1% Triton X-100 in TBS for 10 minutes at room temperature and blocked with 1% Blocker BSA (Product # 37525) for 15 minutes at room temperature. Cells were probed with a DyLight 680-conjugated Beta-Tubulin monoclonal antibody (Product # MA5-16308-D680) at a dilution of 1:50 for at least 1 hour at room temperature and washed with PBS. F-actin (green) was stained with DyLight 488 Phalloidin (Product # 21833) and nuclei (blue) were stained with Hoechst 33342 dye (Product # 62249). Images were taken on a Thermo Scientific ArrayScan or ToxInsight Instrument at 20X magnification.

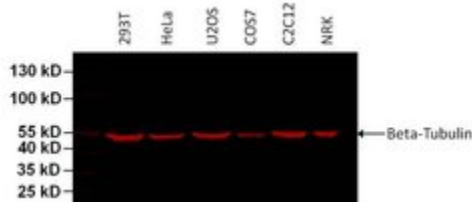
beta Tubulin Loading Control Antibody (MA5-16308-D680) in WB

Western blot analysis was performed on whole cell extracts (30 μ g lysate) of COS-7 (Lane 1), MDCK (Lane 2), C2C12 (Lane 3), MDA-MB-231 (Lane 4), PC-12 (Lane 5), RSC96 (Lane 6), tissue extracts of Mouse Lung (Lane 7) and Rat Stomach (Lane 8). The blot was probed with beta Tubulin Loading Control Monoclonal Antibody (BT7R), DyLight 680 (Product # MA5-16308-D680, 1 μ g/mL). A 50 kDa band corresponding to beta Tubulin was observed across the cell lines and tissues tested. Known quantity of protein samples were electrophoresed using Novex® NuPAGE® 10% Bis-Tris gel (Product # NP0322BOX), XCell SureLock™ Electrophoresis System (Product # EI0002) and Novex® Sharp Pre-Stained Protein Standard (Product # LC5800). Resolved proteins were then transferred onto a nitrocellulose membrane with iBlot® 2 Dry Blotting System (Product # IB21001). The membrane was probed with the relevant primary antibody following blocking with 5 % skimmed milk. Fluorescent detection was performed using the Odyssey® Fc imaging system (Li-cor Biosciences).



beta Tubulin Loading Control Antibody (MA5-16308-D680) in WB

Western blot analysis of Beta-Tubulin was performed by loading 75 μ g of various cell lysates per well onto a 4-20% Tris-HCl polyacrylamide gel. Proteins were transferred to a PVDF membrane and blocked with 5% BSA/TBST for at least 1 hour. The membrane was probed with a DyLight 680-conjugated Beta-Tubulin monoclonal antibody (Product # MA5-16308-D680) at a dilution of 1:1000 for 1 hour at room temperature on a rocking platform and washed in TBS-0.1% Tween-20. Detection was performed using the LI-COR Odyssey.



For Research Use Only. Not for use in diagnostic procedures. Not for resale without express authorization. Products are warranted to operate or perform substantially in conformance with published Product specifications in effect at the time of sale, as set forth in the Production documentation, specifications and/or accompanying package inserts ("Documentation"). No claim of suitability for use in applications regulated by FDA is made. The warranty provided herein is valid only when used by properly trained individuals. Unless otherwise stated in the Documentation, this warranty is limited to one year from date of shipment when the Product is subjected to normal, proper and intended usage. This warranty does not extend to anyone other than the Buyer. Any model or sample furnished to Buyer is merely illustrative of the general type and quality of goods and does not represent that any Product will conform to such model or sample. NO OTHER WARRANTIES, EXPRESS OR IMPLIED, ARE GRANTED INCLUDING WITHOUT LIMITATION, IMPLIED WARRANTIES OF MERCHANTABILITY, FITNESS FOR ANY PARTICULAR PURPOSE, OR NON INFRINGEMENT. BUYER'S EXCLUSIVE REMEDY FOR NON-CONFORMING PRODUCTS DURING THE WARRANTY PERIOD IS LIMITED TO REPAIR, REPLACEMENT OF OR REFUND FOR THE NON-CONFORMING PRODUCT(S) AT SELLER'S SOLE OPTION. THERE IS NO OBLIGATION TO REPAIR, REPLACE OR REFUND FOR PRODUCTS AS THE RESULT OF (I) ACCIDENT, DISASTER OR EVENT OF FORCE MAJEURE, (II) MISUSE, FAULT OR NEGLIGENCE OF OR BY BUYER, (III) USE OF THE PRODUCTS IN A MANNER FOR WHICH THEY WERE NOT DESIGNED, OR (IV) IMPROPER STORAGE AND HANDLING OF THE PRODUCTS. Unless otherwise expressly stated on the Product or in the documentation accompanying the Product, the Product is intended for research only and is not to be used for any other purpose, including without limitation, unauthorized commercial uses, in vitro diagnostic uses, ex vivo or in vivo therapeutic uses, or any type of consumption by or application to human or animals.