

HLA-DR Monoclonal Antibody (LN3), Super Bright 600, eBioscience™

| Product Details | |
|-----------------------------|--|
| Size | 100 Tests |
| Species Reactivity | Human |
| Published Species | Human |
| Host/Isotype | Mouse / IgG2b, kappa |
| Recommended Isotype Control | Mouse IgG2b kappa Isotype Control (eBMG2b), Super Bright 600, eBioscience™ |
| Class | Monoclonal |
| Type | Antibody |
| Clone | LN3 |
| Conjugate | Super Bright™ 600 |
| Form | Liquid |
| Concentration | 5 µL/Test |
| Purification | Affinity chromatography |
| Storage buffer | PBS, pH 7.2, with BSA |
| Contains | 0.09% sodium azide |
| Storage conditions | 4° C, store in dark, DO NOT FREEZE! |
| RRID | AB_2637402 |

| Applications | Tested Dilution | Publications |
|------------------------------|---------------------|-----------------|
| Immunohistochemistry (IHC) | - | 2 Publications |
| Immunocytochemistry (ICC/IF) | - | 1 Publication |
| Flow Cytometry (Flow) | 5 µL (0.06 µg)/test | 12 Publications |
| ELISA (ELISA) | - | 1 Publication |

Product Specific Information

Description: The LN3 mAb reacts with the human major histocompatibility complex (MHC) class II, HLA-DR. HLA-DR is expressed on the surface of human antigen presenting cells (APC) including B cells, monocytes, macrophages, DCs, and activated T cells. HLA-DR is a heterodimeric transmembrane protein composed of alpha and beta subunits and plays an important role in the presentation of peptides to CD4+ T lymphocytes.

Applications Reported: This LN3 antibody has been reported for use in flow cytometric analysis.

Applications Tested: This LN3 antibody has been pre-titrated and tested by flow cytometric analysis of normal human peripheral blood cells. This can be used at 5 µL (0.06 µg) per test. A test is defined as the amount (µg) of antibody that will stain a cell sample in a final volume of 100 µL. Cell number should be determined empirically but can range from 10⁵ to 10⁸ cells/test.

Super Bright 600 is a tandem dye that can be excited with the violet laser line (405 nm) and emits at 600 nm. We recommend using a 610/20 bandpass filter. Please make sure that your instrument is capable of detecting this fluorochrome.

When using two or more Super Bright dye-conjugated antibodies in a staining panel, it is recommended to use Super Bright Complete Staining Buffer (Product # SB-4401) to minimize any non-specific polymer interactions. Please refer to the datasheet for Super Bright Staining Buffer for more information.

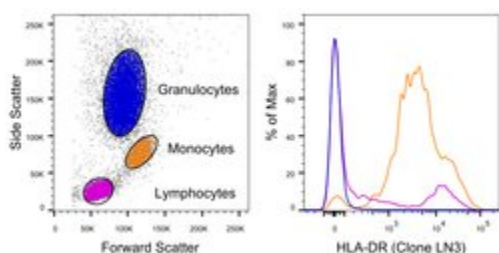
Light sensitivity: This tandem dye is sensitive to photo-induced oxidation. Protect this vial and stained samples from light.

Fixation: Samples can be stored in IC Fixation Buffer (cat. 00-8222) (100 μ L of cell sample + 100 μ L of IC Fixation Buffer) or 1-step Fix/Lyse Solution (cat. 00-5333) for up to 3 days in the dark at 2-8°C with minimal impact on brightness and FRET efficiency /compensation. Some generalizations regarding fluorochrome performance after fixation can be made, but clone specific performance should be determined empirically.

Excitation: 405 nm; Emission: 600 nm; Laser: Violet Laser

Super Bright Polymer Dyes are sold under license from Becton, Dickinson and Company.

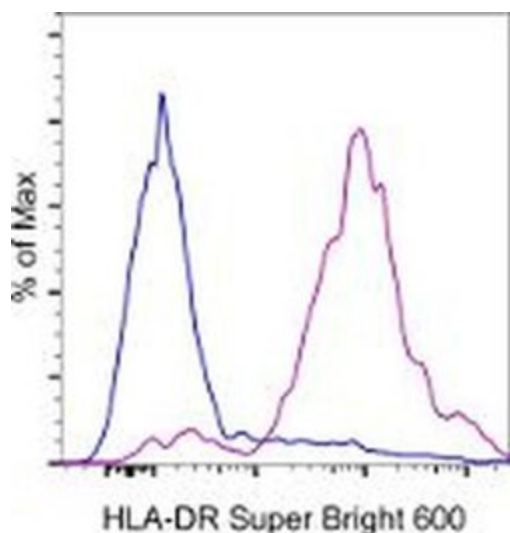
✓ Advanced Verification Data



HLA-DR Antibody (63-9956-42)

Staining of human peripheral blood cells. As expected based on known relative expression patterns, HLA-DR clone LN3 stains monocytes and a subset of lymphocytes (B cells) but does not stain granulocytes. Details: Normal human whole blood was surface stained with HLA-DR (clone LN3). After staining, red blood cells were lysed using 1-step Fix/Lyse Buffer. Cells in the lymphocyte (purple histogram), monocyte (orange histogram), or granulocyte (blue histogram) gates were used for analysis of HLA-DR staining. Relative expression validation info.

Product Images For HLA-DR Monoclonal Antibody (LN3), Super Bright 600, eBioscience™



HLA-DR Antibody (63-9956-42) in Flow

Staining of normal human peripheral blood cells with Anti-Human HLA-DR Super Bright 600. Cells in the lymphocyte (blue histogram) and monocyte (purple histogram) gates were used for analysis.

[View more figures on thermofisher.com](https://www.thermofisher.com)

16 References

Immunohistochemistry (2)

Frontiers in molecular neuroscience

Increased White Matter Inflammation in Aging- and Alzheimer's Disease Brain.

"Published figure using HLA-DR monoclonal antibody (Product # 63-9956-42) in Immunohistochemistry"

Authors: Raj D, Yin Z, Breur M, Doorduyn J, Holtman IR, Olah M, Mantingh-Otter IJ, Van Dam D, De Deyn PP, den Dunnen W, Eggen B, Amor S, Boddeke E

Species
Not Applicable

Dilution
Not Cited

Year
2020

Cells

Aquaporin-4 Expression during Toxic and Autoimmune Demyelination.

"Published figure using HLA-DR monoclonal antibody (Product # 63-9956-42) in Immunohistochemistry"

Authors: Rohr SO, Greiner T, Joost S, Amor S, Valk PV, Schmitz C, Kipp M

Species
Not Applicable

Dilution
Not Cited

Year
2020

Immunocytochemistry (1)

Biochemistry and biophysics reports

Pentraxin-3 regulates the inflammatory activity of macrophages.

"Published figure using HLA-DR monoclonal antibody (Product # 63-9956-42) in Immunocytochemistry"

Authors: Shiraki A, Kotooka N, Komoda H, Hirase T, Oyama JI, Node K

Species
Human

Dilution
Not Cited

Year
2016

Flow Cytometry (12)

Journal of translational medicine

Connecting METTL3 and intratumoural CD33⁺ MDSCs in predicting clinical outcome in cervical cancer.

"Published figure using HLA-DR monoclonal antibody (Product # 63-9956-42) in Flow Cytometry"

Authors: Ni HH, Zhang L, Huang H, Dai SQ, Li J

Species
Not Applicable

Dilution
Not Cited

Year
2020

[View more Flow references on thermofisher.com](#)

More applications with references on thermofisher.com

ELISA (1)

For Research Use Only. Not for use in diagnostic procedures. Not for resale without express authorization. Products are warranted to operate or perform substantially in conformance with published Product specifications in effect at the time of sale, as set forth in the Production documentation, specifications and/or accompanying package inserts ("Documentation"). No claim of suitability for use in applications regulated by FDA is made. The warranty provided herein is valid only when used by properly trained individuals. Unless otherwise stated in the Documentation, this warranty is limited to one year from date of shipment when the Product is subjected to normal, proper and intended usage. This warranty does not extend to anyone other than the Buyer. Any model or sample furnished to Buyer is merely illustrative of the general type and quality of goods and does not represent that any Product will conform to such model or sample. NO OTHER WARRANTIES, EXPRESS OR IMPLIED, ARE GRANTED INCLUDING WITHOUT LIMITATION, IMPLIED WARRANTIES OF MERCHANTABILITY, FITNESS FOR ANY PARTICULAR PURPOSE, OR NON-INFRINGEMENT. BUYER'S EXCLUSIVE REMEDY FOR NON-CONFORMING PRODUCTS DURING THE WARRANTY PERIOD IS LIMITED TO REPAIR, REPLACEMENT OF OR REFUND FOR THE NON-CONFORMING PRODUCT(S) AT SELLER'S SOLE OPTION. THERE IS NO OBLIGATION TO REPAIR, REPLACE OR REFUND FOR PRODUCTS AS THE RESULT OF (I) ACCIDENT, DISASTER OR EVENT OF FORCE MAJEURE, (II) MISUSE, FAULT OR NEGLIGENCE OF OR BY BUYER, (III) USE OF THE PRODUCTS IN A MANNER FOR WHICH THEY WERE NOT DESIGNED, OR (IV) IMPROPER STORAGE AND HANDLING OF THE PRODUCTS. Unless otherwise expressly stated on the Product or in the documentation accompanying the Product, the Product is intended for research only and is not to be used for any other purpose, including without limitation, unauthorized commercial uses, in vitro diagnostic uses, ex vivo or in vivo therapeutic uses, or any type of consumption by or application to human or animals.