

Mitochondrial Membrane Potential/Annexin V Apoptosis Kit with MitoTracker® Red and Alexa® Fluor 488 annexin V for Flow Cytometry

Catalog no. V35116

Table 1. Contents and storage information.

Material	Amount	Composition	Storage*	Stability
Alexa Fluor® 488 annexin V (Component A)	250 µL	Solution in 25 mM HEPES, 140 mM NaCl, 1 mM EDTA, pH 7.4, 0.1% bovine serum albumin (BSA)	<ul style="list-style-type: none"> • 2–6°C (except store Component B desiccated at ≤–20°C) • Protect from light • DO NOT FREEZE COMPONENT A 	When stored as directed this kit is stable for 6 months.
MitoTracker® Red (CMXRos, Component B)	3 × 50 µg	Not applicable		
5X annexin-binding buffer (Component C)	15 mL	50 mM HEPES, 700 mM NaCl, 12.5 mM CaCl ₂ , pH 7.4		
Dimethylsulfoxide (DMSO, Component D)	100 µL	High-quality anhydrous DMSO		

*The Alexa Fluor® 488 annexin V conjugate and MitoTracker® Red dye are light sensitive and may be handled in normal room light, but avoid prolonged exposure to light.

Number of assays: Sufficient material is supplied for 50 flow cytometry assays based on a 100 µL assay volume.

Approximate fluorescence excitation/emission maxima: Alexa Fluor® 488 annexin V: 499/521 in nm; MitoTracker® Red: 579/599 in nm.

Introduction

Apoptosis is a carefully regulated process of cell death that occurs as a normal part of development. Inappropriately regulated apoptosis is implicated in disease states, such as Alzheimer's disease and cancer. Apoptosis is distinguished from necrosis by characteristic morphological and biochemical changes, including compaction and fragmentation of the nuclear chromatin, shrinkage of the cytoplasm, and loss of membrane asymmetry.^{1–5} In normal viable cells, phosphatidylserine (PS) is located on the cytoplasmic surface of the cell membrane. However, in apoptotic cells, PS is translocated from the inner to the outer leaflet of the plasma membrane, thus exposing PS to the external cellular environment.⁶ In leukocyte apoptosis, PS on the outer surface of the cell marks the cell for recognition and phagocytosis by macrophages.^{7,8} The human vascular anticoagulant annexin V is a 35–36 kDa Ca²⁺-dependent phospholipid-binding protein that has a high affinity for PS.⁹ Annexin V labeled with a fluorophore or biotin can identify apoptotic cells by binding to PS exposed on the outer leaflet.¹⁰

The Mitochondrial Membrane Potential/Annexin V Apoptosis Kit with MitoTracker® Red and Alexa® Fluor 488 annexin V for flow cytometry provides a rapid and convenient assay for apoptosis based on PS translocation and changes in mitochondrial membrane potential.

The kit contains recombinant annexin V conjugated to one of our brightest fluorophores, the Alexa Fluor® 488 dye, to provide maximum sensitivity. Alexa Fluor® 488 dye is an almost perfect spectral match to fluorescein (FITC), but it creates brighter and more photostable conjugates. In addition, the kit includes MitoTracker® Red dye to indicate the status of the mitochondrial transmembrane potential.

After staining a cell population with Alexa Fluor® 488 annexin V and MitoTracker® Red dye in the provided binding buffer, apoptotic cells show green fluorescence with decreased red fluorescence, and live cells show very little green fluorescence and bright red fluorescence (Figure 1). These populations can easily be distinguished using a flow cytometer with the 488 nm line of an argon-ion laser to excite both dyes. Alexa Fluor® 488 annexin emits a green fluorescence that can be detected in a 530 nm bandpass filter, and MitoTracker® Red dye emits red fluorescence that can be detected using either orange (585 nm bandpass filter) or red (630 nm longpass filter) channels of a flow cytometer.

We have optimized this assay using Jurkat cells, a human T-cell leukemia clone, treated with camptothecin to induce apoptosis. Some modifications may be required for use with other cell types. Since no single parameter defines apoptosis in all systems, we strongly suggest using a combination of different measurements for reliable detection of apoptosis. This kit could be easily combined with a cell impermeant dye, such as TO-PRO®-3 iodide (Cat. no. T3605), which indicates cell membrane integrity and would help distinguish dying or dead cells. TO-PRO®-3 iodide can be excited with a 633 nm laser and detected with a 660 nm bandpass filter. Refer to our website at probes.invitrogen.com for a wide selection of products for apoptosis research.

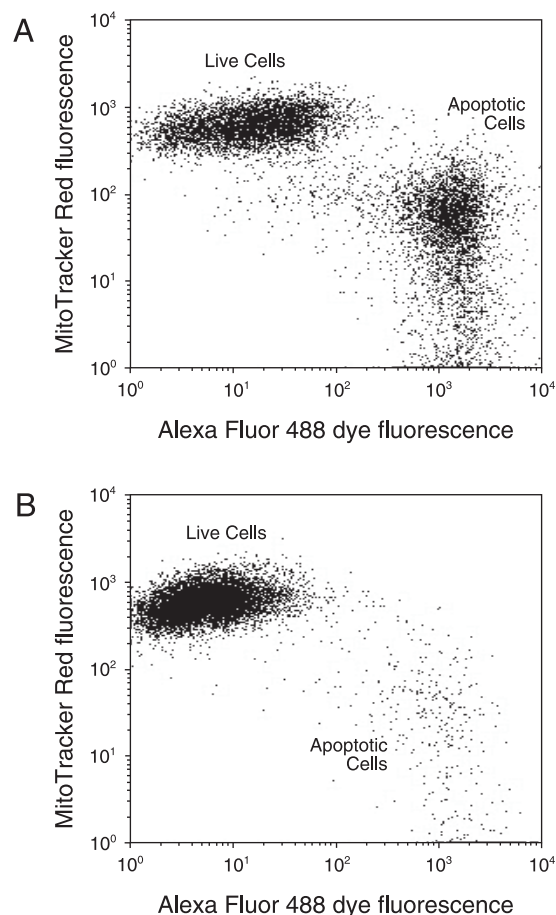


Figure 1. Jurkat cells (T-cell leukemia, human) treated in complete medium with 10 μM camptothecin for four hours (A) or untreated (B). Cells were reacted with the reagents in the kit followed by flow cytometric analysis. Note that the apoptotic cells show higher reactivity for annexin V and lower MitoTracker® Red dye fluorescence than do live cells.

Before Starting

Materials Required but Not Provided

- Samples (appropriate sample concentrations range from 2×10^5 to 1×10^6 cells/mL)
- Inducing agent
- 2 mM hydrogen peroxide
- Phosphate buffered saline (PBS)
- Deionized water

Experimental Protocol

This assay has been optimized using Jurkat cells treated with camptothecin to induce apoptosis. Some modifications may be required for use with other cell types.

1. Induce apoptosis in cells using the desired method. Prepare a negative control by incubating cells in the absence of inducing agent. Prepare a positive control for necrosis by incubating cells with 2 mM hydrogen peroxide for 4 hours at 37°C.
2. Harvest the cells and count them, adjusting their concentration to 5×10^6 cells/mL in culture medium.
3. Prepare 1X annexin-binding buffer. For example, for ~10 assays, add 1 mL 5X annexin-binding buffer (Component C) to 4 mL of deionized water.
4. Prepare a 10 mM stock solution of MitoTracker® Red dye by adding 9.4 µL DMSO (Component D) to a vial of MitoTracker® Red dye (Component B). Store the unused portion of this stock solution at $\leq -20^\circ\text{C}$ for up to 1 month.
5. To prepare a 10 µM working solution of the MitoTracker® Red dye, pipet 1 µL of 10 mM MitoTracker® Red stock solution into 1,000 µL of medium.
6. To 1 mL of cells, add 4 µL of 10 µM MitoTracker® Red working solution from the above step and stain for 30 minutes at 37°C in an atmosphere of 5% CO₂.
7. Wash the cells with PBS and resuspend the cells in 100 µL of 1X annexin-binding buffer. Add 5 µL of Alexa Fluor® 488 annexin V (Component A).

Note: If also using TO-PRO®-3 iodide, add it to the cells at a concentration of 1 µM along with the Alexa Fluor® 488 annexin V (step 7).
8. Incubate the cells at room temperature for 15 minutes.
9. After the incubation period, add 400 µL 1X annexin-binding buffer, mix gently and place the samples on ice.
10. As soon as possible, analyze the stained cells by flow cytometry, measuring the fluorescence emission at 530 nm and 585 nm. The cells should resolve into two principal populations: live cells with a low level of green fluorescence and high red fluorescence, and apoptotic cells with moderate level of green fluorescence and low red fluorescence (see Figure 1). If using TO-PRO®-3 iodide, cells with damaged membranes will show high red fluorescence when excited with a 633 nm laser line. Confirm the flow cytometry results by viewing the cells under a fluorescence microscope, using filters appropriate for fluorescein and Texas Red®.

References

1. Immunol Cell Biol 76, 1 (1998); 2. Cytometry 27, 1 (1997); 3. J Pharmacol Toxicol Methods 37, 215 (1997); 4. FASEB J 9, 1277 (1995); 5. Am J Pathol 146, 3 (1995); 6. Cytometry 31, 1 (1998); 7. J Immunol 148, 2207 (1992); 8. J Immunol 151, 4274 (1993); 9. J Biol Chem 265, 4923 (1990); 10. Blood 84, 1415 (1994).

Product List

Current prices may be obtained from our website or from our Customer Service Department.

Cat. no.	Product Name	Unit Size
V35116	Mitochondrial Membrane Potential/Annexin V Apoptosis Kit with MitoTracker® Red and Alexa® Fluor 488 annexin V *flow cytometry* *50 assays*	1 kit

Contact Information

Molecular Probes, Inc.

29851 Willow Creek Road
Eugene, OR 97402
Phone: (541) 465-8300
Fax: (541) 335-0504

Customer Service:

6:00 am to 4:30 pm (Pacific Time)
Phone: (541) 335-0338
Fax: (541) 335-0305
probesorder@invitrogen.com

Toll-Free Ordering for USA:

Order Phone: (800) 438-2209
Order Fax: (800) 438-0228

Technical Service:

8:00 am to 4:00 pm (Pacific Time)
Phone: (541) 335-0353
Toll-Free (800) 438-2209
Fax: (541) 335-0238
probestech@invitrogen.com

Invitrogen European Headquarters

Invitrogen, Ltd.
3 Fountain Drive
Inchinnan Business Park
Paisley PA4 9RF, UK
Phone: +44 (0) 141 814 6100
Fax: +44 (0) 141 814 6260
Email: euroinfo@invitrogen.com
Technical Services: eurotech@invitrogen.com

For country-specific contact information,
visit www.invitrogen.com.

Further information on Molecular Probes products, including product bibliographies, is available from your local distributor or directly from Molecular Probes. Customers in Europe, Africa and the Middle East should contact our office in Paisley, United Kingdom. All others should contact our Technical Service Department in Eugene, Oregon.

Molecular Probes products are high-quality reagents and materials intended for research purposes only. These products must be used by, or directly under the supervision of, a technically qualified individual experienced in handling potentially hazardous chemicals. Please read the Material Safety Data Sheet provided for each product; other regulatory considerations may apply.

Limited Use Label License No. 223: Labeling and Detection Technology

The purchase of this product conveys to the buyer the non-transferable right to use the purchased amount of the product and components of the product in research conducted by the buyer (whether the buyer is an academic or for-profit entity). The buyer cannot sell or otherwise transfer (a) this product (b) its components or (c) materials made using this product or its components to a third party or otherwise use this product or its components or materials made using this product or its components for Commercial Purposes. The buyer may transfer information or materials made through the use of this product to a scientific collaborator, provided that such transfer is not for any Commercial Purpose, and that such collaborator agrees in writing (a) to not transfer such materials to any third party, and (b) to use such transferred materials and/or information solely for research and not for Commercial Purposes. Commercial Purposes means any activity by a party for consideration and may include, but is not limited to: (1) use of the product or its components in manufacturing; (2) use of the product or its components to provide a service, information, or data; (3) use of the product or its components for therapeutic, diagnostic or prophylactic purposes; or (4) resale of the product or its components, whether or not such product or its components are resold for use in research. Invitrogen Corporation will not assert a claim against the buyer of infringement of the above patents based upon the manufacture, use or sale of a therapeutic, clinical diagnostic, vaccine or prophylactic product developed in research by the buyer in which this product or its components was employed, provided that neither this product nor any of its components was used in the manufacture of such product. If the purchaser is not willing to accept the limitations of this limited use statement, Invitrogen is willing to accept return of the product with a full refund. For information on purchasing a license to this product for purposes other than research, contact Molecular Probes, Inc., Business Development, 29851 Willow Creek Road, Eugene, OR 97402, Tel: (541) 465-8300. Fax: (541) 335-0354.

Several Molecular Probes products and product applications are covered by U.S. and foreign patents and patents pending. All names containing the designation ® are registered with the U.S. Patent and Trademark Office.

Copyright 2010, Molecular Probes, Inc. All rights reserved. This information is subject to change without notice.