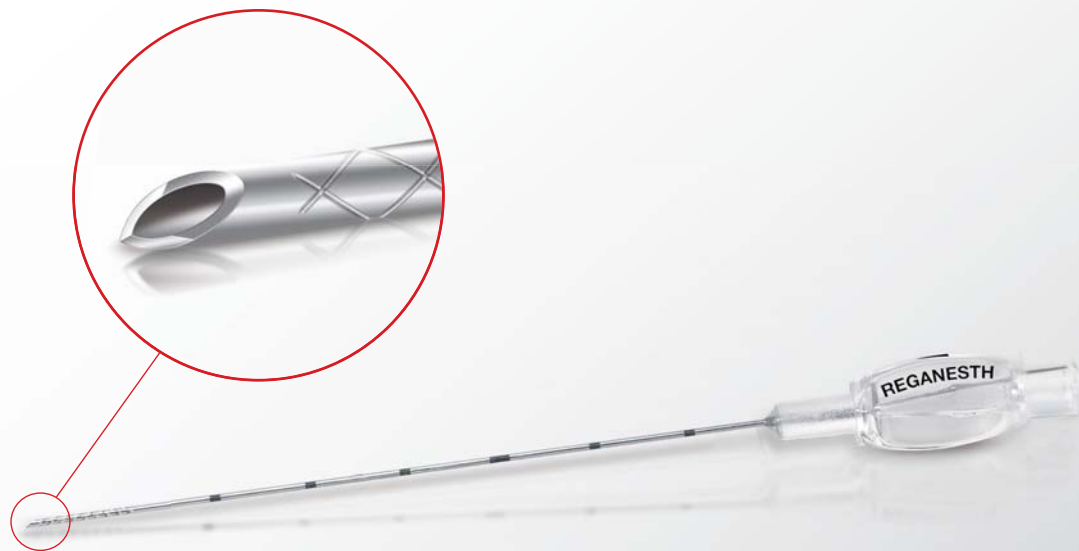


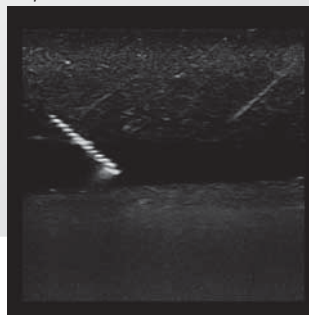
REGANESTH[®] unoplex

Ultrasound-guided peripheral nerve blocks

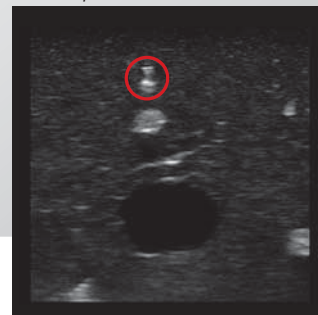


Suitable for ultrasound

In plane



Out of plane



REGANESTH[®] unoplex

- The REGANESTH[®] unoplex needle was developed for ultrasound-guided nerve blocks
- The needle tip enables outstanding visibility, even for steep puncture angles

Efficient

The *rhombus cut* ultrasound marker enables excellent echogenicity



Easy to use

Convenient handling thanks to the ergonomically designed REGANESTH® handle and bevel position marking



Accessories



Ordering information

Order no.	Description	Packaging unit
79.8096.040	REGANESTH® unoplex 25G x 40 mm with detachable 60 cm injection tube	10
79.8096.050	REGANESTH® unoplex 22G x 50 mm with detachable 60 cm injection tube	10
79.8096.080	REGANESTH® unoplex 22G x 80 mm with detachable 60 cm injection tube	10
79.8096.100	REGANESTH® unoplex 20G x 100 mm with detachable 60 cm injection tube	10
79.8096.185	Unoplex-Catheter-Set 18G x 50 mm/21G REGANESTH® unoplex 18G x 50 mm, Plexus catheter 21G x 400 mm, closed tip with three lateral openings and stylet, extension tube 60 cm, Tuohy-Borst adapter, Luer hub insert, flat filter 0.2 µm with fixation	5
79.8096.285	Unoplex-Catheter-Set OE 18G x 50 mm/21G REGANESTH® unoplex 18G x 50 mm, Plexus catheter 21G x 500 mm, central opening with stylet, extension tube 60 cm, Tuohy-Borst adapter, Luer hub insert, flat filter 0.2 µm with fixation	5
79.8096.150	REGANESTH® unoplex 18G x 50 mm	20
79.8096.188	Unoplex-Catheter-Set 18G x 80 mm/21G REGANESTH® unoplex 18G x 80 mm, Plexus catheter 21G x 400 mm, closed tip with three lateral openings and stylet, extension tube 60 cm, Tuohy-Borst adapter, Luer hub insert, flat filter 0.2 µm with fixation	5
79.8096.288	Unoplex-Catheter-Set OE 18G x 80 mm/21G REGANESTH® unoplex 18G x 80 mm, Plexus catheter 21G x 500 mm, central opening with stylet, extension tube 60 cm, Tuohy-Borst adapter, Luer hub insert, flat filter 0.2 µm with fixation	5
79.8096.180	REGANESTH® unoplex 18G x 80 mm	20

Distributed by:

SARSTEDT AG & Co. KG
P.O. Box 12 20
D-51582 Nümbrecht
Phone: +49 2293 305 0
Fax: +49 2293 305 3992
export@sarstedt.com
www.sarstedt.com