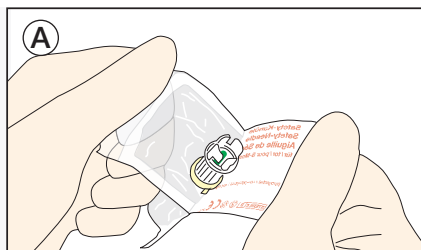


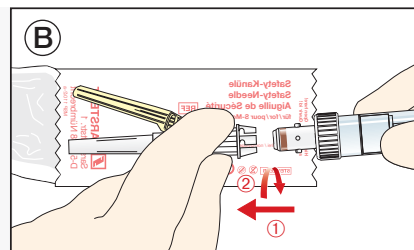
Safety-Needle

Instructions for use

Before blood collection

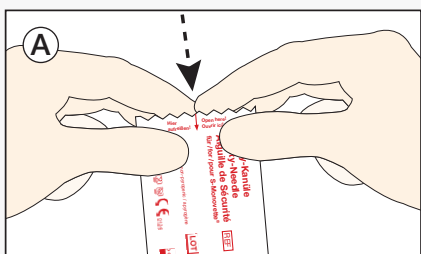


Peel open the packaging using your thumb and forefinger.

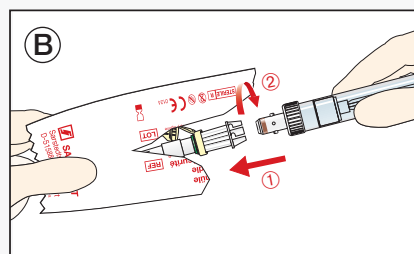


Assemble the S-Monovette® with the needleholder of the Safety-Needle.

OR

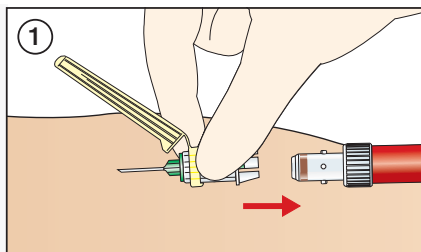


Tear the packaging open along the central arrow.



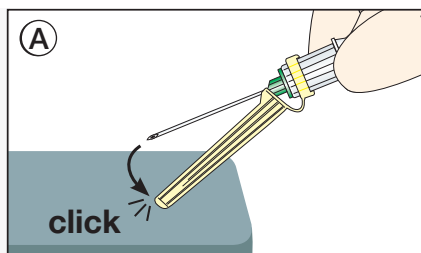
Assemble the S-Monovette® with the needleholder of the Safety-Needle.

After blood collection

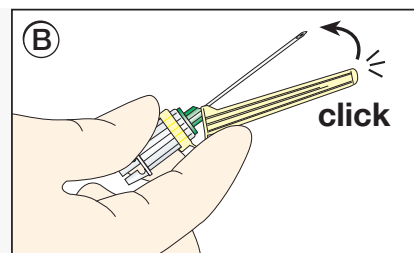


Detach the last S-Monovette® from the Safety-Needle and then remove the Safety-Needle from the vein.

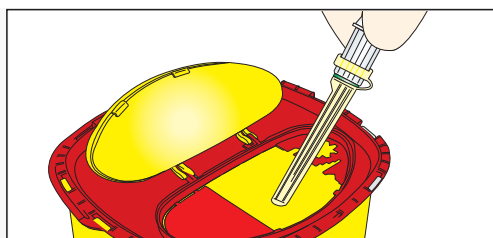
How to activate the needle protector...



Place the needle protector on a solid surface and press down to lock needle.



Alternatively, press down on the lower end cover and of the needle protector with your forefinger to cover and lock needle.

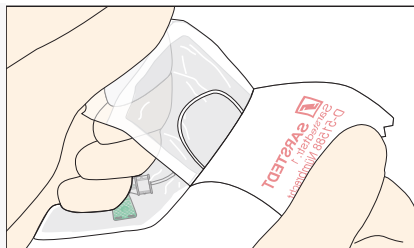


After activating the needle protector, discard the safely locked Safety-Needle in a sharps container.

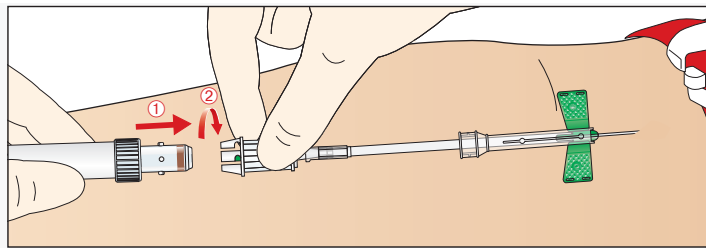
Safety-Multify® Needle

Instructions for use

Before blood collection

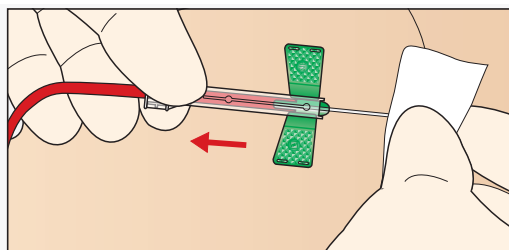


Peel open the packaging using your thumb and forefinger.



Assemble the S-Monovette® with the needleholder of the Safety-Multify® Needle.

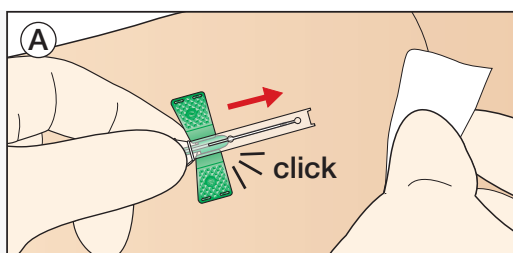
After blood collection



Grasp the back end of the needle protector between your thumb and forefinger, before withdrawing the Safety-Multify® Needle from the vein.

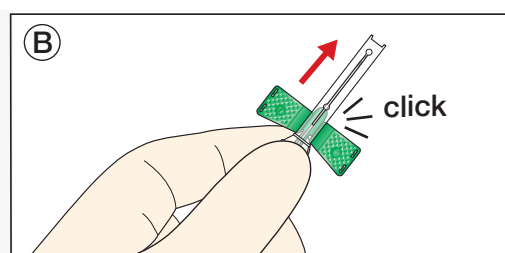
How to activate the needle protector...

...while the needle is still in the vein

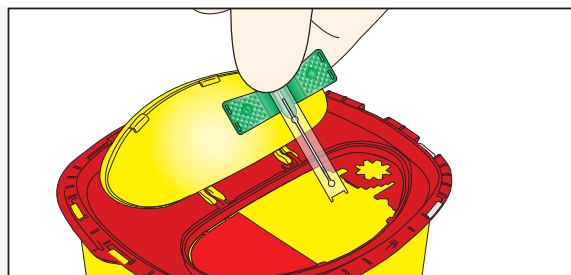


Slide the needle protector forward while removing the Safety-Multify® Needle from the vein.

...after the needle has been removed from the vein



Remove the Safety-Multify® Needle from the vein and then slide the needle protector forward.



After activating the needle protector, discard the safely locked Safety-Multify® Needle in a sharps container.

SARSTEDT Ltd.
68 Boston Road
Beaumont Leys
Leicester
LE4 1AW
Tel: +44 116 235 9023
Fax: +44 116 236 6099
info.gb@sarstedt.com
www.sarstedt.com