



# PowerGene 9600 Plus

REALTIME PCR MACHINE



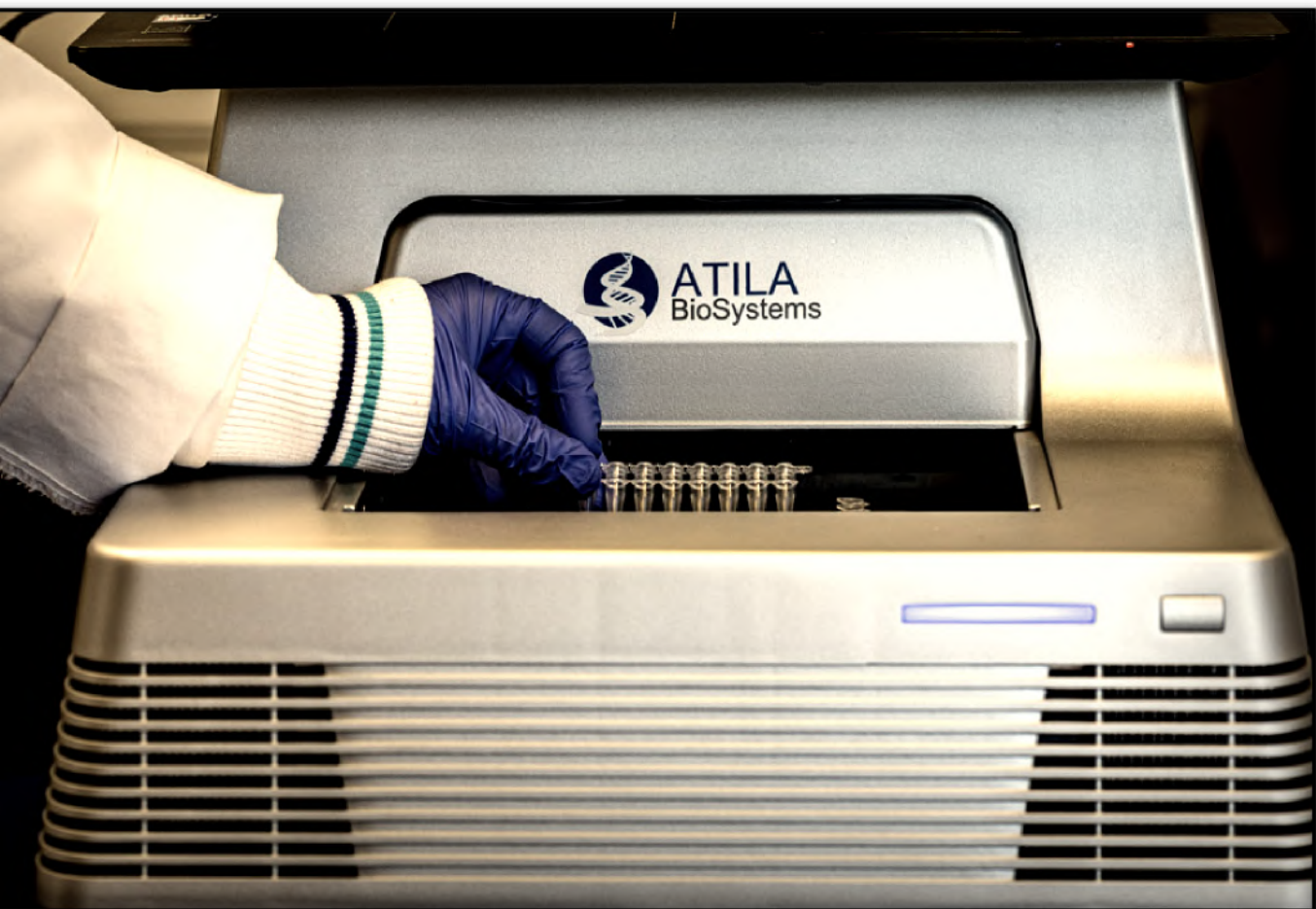
By Atila BioSystems

PowerGene 9600 Plus

# A powerful machine, for all your testing needs.

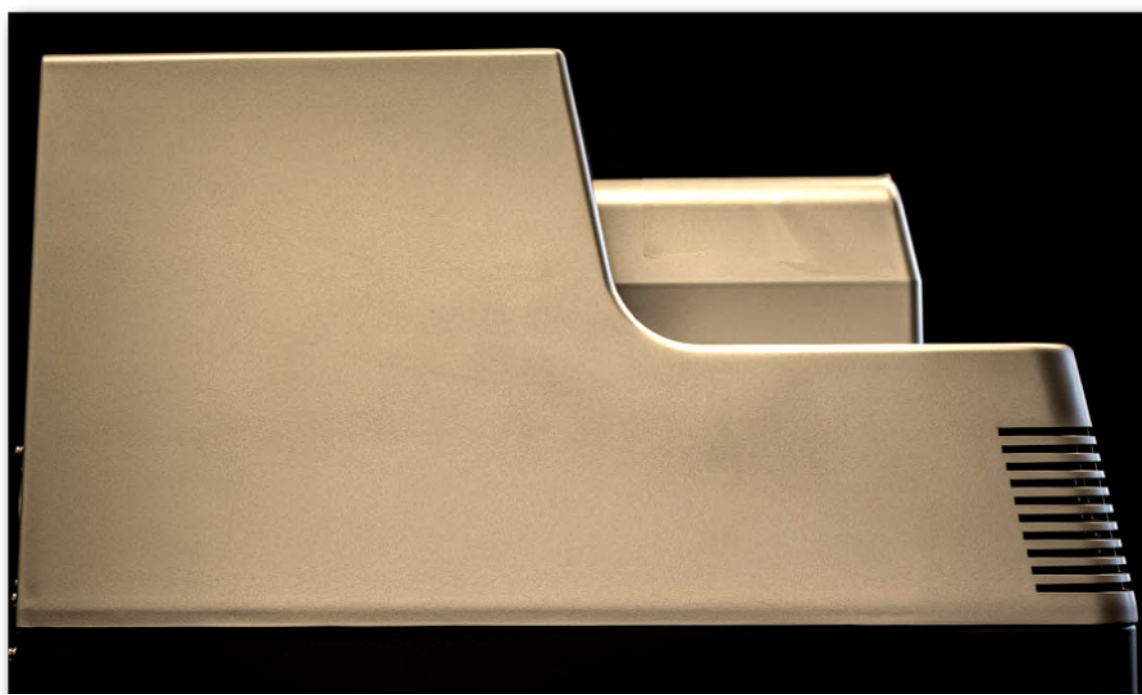
**The Power-Gene 9600 Plus is a fast and powerful PCR machine with capacity for 96 wells in a run-time of under 60 minutes.**

- ☀ A newly-designed automatic hot-lid ensures constant pressure for various tube heights and can be easily integrated into various automatic systems.
- ☀ The machine is equipped with 5 channel detection, covering the entire fluorescence detection wavelength.
- ☀ The Power-Gene 9600 Plus uses advanced fiber optic technology and unique patented block dissipation technology for better temperature accuracy, uniformity and stability.



# Technical specifications

Name	PowerGene 9600 Plus
Model	FQD-96A
Sample Capacity	96X0.2ml (Bottom Transparent)
Dynamics Range	1~1010 Copies
Excitation Wavelength	300~800nm
Emission Wavelength	500~800nm
Detected Fluorescence	F1: FAM, SYBR Green I; F2: VIC, HEX, TET, JOE, CY3, TAMRA; F3: ROX, TEXAS-RAD; F4: CY5, Quasar-670; F5: CY5.5, Quasar- 705
Block Temp. Range	4~105 °C (Minimum Increment: 0.1 °C) SOAK Low Temp. Conservation Function
Heating/Cooling Rate	4.0 °C/s (max)
Temp. Control Accuracy	≤±0.1 °C
Temp. Fluctuation	≤±0.1 °C
Temp. Uniformity	≤±0.3 °C
Temp. Control Mode	Block/Tube Simulation Mode (automatic control based on sample volume)
Sample Volume Range	5~100 µL
Gradient Temp. Range	1~36 °C



# Technical specifications-II

Hot-lid Temp. Range	30~110 °C (Adjustable, Default 105 °C, Automatic Hot-lid)
Fluorescence Detection Repeatability	5%
Scan Mode	Entire Plate or Designated Line
Program	Max 20 Segments for Each Program, Max 99 Cycles
Operation Mode	Continuous
Scan Period	5.5s
Feature Function	Absolute Quantification, Relative Quantification, SNP Analysis, Data Automatic Analysis, Melting Curve Genotyping, Gradient, HRM, Multi-channel Crosstalk Correction, Background Correction, Automatic Gain, Customized Parameters.
Operation System	Microsoft, Windows XP/windows vista/windows 7/windows 8 Software, Excel 2000/2002/2003/2007/2012
PC Configuration	Memory: 512M; Hard Disk: 10GB; CPU: Pentium® 4; Virtual Memory: ≥1000MB
Power Supply	100-240V ~ 50/60Hz 600W
Dimension (L×W×H)	410mm×386mm×352mm
Socket	USB Adapter, Bluetooth Adapter
Authentication	<u>Ferrotec Pelitier</u> /CE/MET/RoHS2/PICC Product Quality Liability Insurance



## Training is provided

Training on using the machine and software is provided from a trained technical specialist.

PowerGene 9600

# Easy-to-use software

- ☀ The accompanying PowerGene software can be installed on any windows device, and is ready to be used after a short set-up process for your first run.
- ☀ The machine easily connects via USB-cable to the device to provide the output and results from the run.
- ☀ The software interface allows for fast adjustments to the requirements of the specific test and run relevant for your work.

PowerGene 9600

# Provided by Atila BioSystems

## An innovative field leader.

- ✓ Since 2009, Atila BioSystems has focused on developing novel chemistry for nucleic acid amplification and detection of clinical diagnostic applications.
- ✓ The Atila team brings deep expertise in biological and chemical engineering as we work to develop innovative technologies with ultra-high multiplex ability, accuracy, and speed.
- ✓ The Atila team is the proud developed of the iAMP COVID-19 test kit, which allows for fast COVID PCR testing without requiring RNA extraction.

FDA-EUA Cleared

The test kit is FDA-EUA cleared, together with the PowerGene 9600 Plus.



For more information contact:

Tel: +1 (650)-968-8848

Email: [info@atilabiosystems.com](mailto:info@atilabiosystems.com)



**ATILA**  
BioSystems