



CleanPlex[®] Hereditary Cancer Panel v2

User Guide

This user guide is for the following product for sequencing on Illumina[®] and Ion Torrent[™] NGS platforms:

- CleanPlex[®] Hereditary Cancer Panel v2

Get the latest user guide at: www.paragongenomics.com/product_documents/

This document and its contents are proprietary to Paragon Genomics, Inc., and are intended solely for the contractual use of its customer in connection with the use of the product(s) described herein and for no other purpose. This document and its contents shall not be used or distributed for any other purpose and/or otherwise communicated, disclosed, or reproduced in any way whatsoever without the prior written consent of Paragon Genomics. Paragon Genomics does not convey any license under its patent, trademark, copyright, or common-law rights nor similar rights of any third parties by this document.

The contents of this document are provided "AS IS." This document may be updated or changed without notice at any time. This information could contain technical inaccuracies, typographical errors and out-of-date information. Use of the information is therefore at your own risk. In no event shall PARAGON GENOMICS, INC. be liable for any special, indirect, incidental or consequential damages resulting from or related to the use of this document.

The instructions in this document must be strictly and explicitly followed by qualified and properly trained personnel in order to ensure the proper and safe use of the product(s) described herein. All of the contents of this document must be fully read and understood prior to using such product(s). FAILURE TO COMPLETELY READ AND EXPLICITLY FOLLOW ALL OF THE INSTRUCTIONS CONTAINED HEREIN MAY RESULT IN DAMAGE TO THE PRODUCT(S), INJURY TO PERSONS, INCLUDING TO USERS OR OTHERS, AND DAMAGE TO OTHER PROPERTY, AND WILL VOID ANY WARRANTY APPLICABLE TO THE PRODUCT(S).

PARAGON GENOMICS DOES NOT ASSUME ANY LIABILITY ARISING OUT OF THE IMPROPER USE OF THE PRODUCT(S) DESCRIBED HEREIN.

CleanPlex® NGS Panels are intended for **Research Use Only**. It may not be used for any other purposes including, but not limited to, use in diagnostics, therapeutics, or in humans. CleanPlex NGS Panels may not be transferred to third parties, resold, modified for resale or used to manufacture commercial products without prior written approval of Paragon Genomics, Inc.

All trademarks are the property of Paragon Genomics, Inc. or their respective owners.

©2019 Paragon Genomics, Inc. All Rights Reserved.

Revision History

Document	Date	Description of Change
UG1004-01	October 2019	<ul style="list-style-type: none">Initial version

Table of Content

Overview	4
Product Information	4
Applications	5
Compatible Sequencing Instruments	5
Kit Contents	6
Required Materials and Equipment Not Included	7
Storage, Handling, and Usage	9
Workflow	10
Protocol	11
Best Practices	11
Input DNA Requirements	13
1A. Multiplex PCR (mPCR) Reaction	14
1B. Post-mPCR Purification	16
2A. Digestion Reaction	19
2B. Post-Digestion Purification	21
3A. Second PCR Reaction	23
3B. Post-Second PCR Purification	26
Quality Control Prior to Sequencing	28
Recommended Sequencing Length and Depth	28
Supporting Information	29
Dual-Indexed PCR Primers for Illumina	29
Single-Indexed PCR Primers for Ion Torrent	32
Troubleshooting Guide	42
Data Analysis Recommendations for Illumina	45
Data Analysis Recommendations for Ion Torrent	46
Technical Support	47

Overview

Product Information

CleanPlex® NGS Panels are a fast, robust, and versatile solution for target enrichment and library preparation for next-generation sequencing (NGS) on Illumina® and Ion Torrent™ sequencing platforms. The CleanPlex Hereditary Cancer Panel v2 is a targeted resequencing assay designed for analyzing genes associated with an increased risk of developing hereditary cancers. The panel is expertly curated using the latest research findings to target 37 genes and both single nucleotide variants (SNVs) and insertion-deletion mutations (indels). This panel is specifically designed to detect inherited mutations and is not appropriate for the detection of other types of mutations in acquired cancers. Starting with 20 ng of high-quality genomic DNA (10 ng per primer pool), sequencing-ready libraries can be prepared using a streamlined workflow in just 3 hours.

The CleanPlex Hereditary Cancer Panel v2 provides enhanced performance and further streamlined workflow. The panel is capable of detecting Boland inversion, and the number of multiplex PCR primer pools has been reduced from 4 pools to just 2 pools.

The CleanPlex Hereditary Panel v2 is powered by Paragon Genomics' proprietary CleanPlex Technology, which combines an advanced primer design algorithm and an innovative background cleaning chemistry to generate best-in-class target enrichment performance and efficient use of sequencing reads. The patented CleanPlex background cleaning chemistry effectively removes non-specific PCR products to enable ultra-high multiplexing of amplicons. More than 20,000 amplicons can be multiplexed per primer pool to build large NGS panels that can interrogate megabase-size genomic regions to unlock new applications using a streamlined workflow.

The CleanPlex Hereditary Panel v2 features a simple and streamlined workflow that can be completed in less than 3 hours from input DNA to indexed and amplified NGS libraries. The workflow involves just 3 steps, each consisting of a thermal-cycling or incubation reaction followed by a library purification using magnetic beads. Tube-to-tube transfer is minimized throughout the protocol to preserve DNA material and prevent handling errors and sample mix-up.

The first step of the CleanPlex workflow is a multiplex PCR reaction that uses target-specific primers to amplify targets of interest. The second step is a digestion reaction that performs background cleaning by removing non-specific PCR products. The last step is a PCR reaction that uses CleanPlex Indexed PCR Primers to amplify and add sample-level indexes to the NGS libraries. CleanMag® Magnetic Beads are recommended for library purification. See the Workflow section for a detailed depiction of the CleanPlex workflow.



CleanPlex HEREDITARY CANCER PANEL V2 Target Enrichment and Library Preparation Workflow

3 hours of total assay time, 75 minutes of hands-on time

Applications

The CleanPlex Hereditary Cancer Panel v2 can be used to detect germline mutations for analyzing genes associated with an increased risk of developing hereditary cancers.

The table below shows some of the sample types and applications of the CleanPlex Hereditary Panel v2. This is not meant to be an exhaustive or restrictive list.

Organism	Sample Types	Applications
<ul style="list-style-type: none"> Human 	<ul style="list-style-type: none"> Degraded DNA from FFPE tissues. Note: highly degrade FFPE DNA will likely produce low-quality libraries. Genomic DNA from whole blood, tissues, biofluids, buccal swab, and dried blood spots (DBSs). 	<ul style="list-style-type: none"> Disease predisposition

Compatible Sequencing Instruments

CleanPlex Indexed PCR Primers for Illumina are used to generate CleanPlex Hereditary Panel v2 libraries that are compatible with Illumina sequencing platforms, including NovaSeq® 5000/6000 Systems, HiSeq 3000/4000 Systems, HiSeq 2500 System, NextSeq® Series, and MiSeq® System. Choose a sequencing instrument that will meet the sequencing and sample multiplexing requirements of the experiment.

CleanPlex Indexed PCR Primers for Ion Torrent are used to generate CleanPlex target-enriched NGS libraries that are compatible all Ion Torrent sequencing platforms, including Ion PGM System, Ion Proton System, and Ion GeneStudio S5 Series.

Kit Contents

The protocol outlined in the CleanPlex Hereditary Cancer Panel v2 User Guide requires the following components, which need to be ordered separately:

- CleanPlex Hereditary Cancer Panel v2
- CleanPlex Indexed PCR Primers
- CleanMag Magnetic Beads (or equivalent)

Panel Specifications					
Panel	Number of Primer Pools	Primer Pool Concentration	Number of Amplicons	Amplicon Length	Average Library Length
CleanPlex Hereditary Cancer Panel v2	2	5X	1,447	105 – 299 bp (214 bp on average)	350 bp

CleanPlex Hereditary Cancer Panel v2 — Kit Contents, Store at –20°C					
Panel	SKU	Size (Reactions)	Components		
			Primer Pool 1	Primer Pool 2	CleanPlex Targeted Library Kit
CleanPlex Hereditary Cancer Panel v2	916114	8	16 µl	16 µl	2-pool, 8 rxns
	916115	96	192 µl	192 µl	2-pool, 96 rxns

A CleanPlex Targeted Library Kit is included in every CleanPlex Hereditary Cancer Panel v2. Please note that the CleanPlex Ultra Library Kit is **not** sold separately.

CleanPlex Targeted Library Kit — Kit Contents, Store at –20°C (not sold separately)				
		Configuration		2-Pool
		Size	8 Rxns	96 Rxns
Component	Cap Color	SKU	816041	816044
5X Ultra mPCR Mix	Green		32 µl	384 µl
CP Reagent Buffer	White		16 µl	192 µl
CP Digestion Reagent	Yellow		16 µl	192 µl
Stop Buffer	Red		48 µl	576 µl
5X 2nd PCR Mix	Blue		64 µl	768 µl
TE Buffer	Clear		500 µl	4 ml

Required Materials and Equipment Not Included

- CleanPlex Indexed PCR Primers (visit www.paragongenomics.com/store for more indexing options)

CleanPlex Dual-Indexed PCR Primers for Illumina — Store at –20°C

	SKU	Size (Reactions)	Format
CleanPlex Dual-Indexed PCR Primers for Illumina Set A1	716005	16	4 i7 indexes + 4 i5 indexes (8 tubes)
CleanPlex Dual-Indexed PCR Primers for Illumina Set A	716006 716017	96 384	12 i7 indexes + 8 i5 indexes (20 tubes)
CleanPlex Dual-Indexed PCR Primers for Illumina Set B	716018 716019	96 384	12 i7 indexes + 8 i5 indexes (20 tubes)

CleanPlex Single-Indexed PCR Primers for Ion Torrent — Store at –20°C

	SKU	Size (Reactions)	Format
CleanPlex Single-Indexed PCR Primers for Ion Torrent Set A	716007 716008	32 96	16 indexes (16 tubes)
CleanPlex Single-Indexed PCR Primers for Ion Torrent Set B	716009 716010	32 96	16 indexes (16 tubes)
CleanPlex Single-Indexed PCR Primers for Ion Torrent Set C	716025 716029	192 960	96 indexes (96-well plate)
CleanPlex Single-Indexed PCR Primers for Ion Torrent Set D	716026 716030	192 960	96 indexes (96-well plate)
CleanPlex Single-Indexed PCR Primers for Ion Torrent Set E	716027 716031	192 960	96 indexes (96-well plate)
CleanPlex Single-Indexed PCR Primers for Ion Torrent Set F	716028 716032	192 960	96 indexes (96-well plate)

- CleanMag Magnetic Beads, or equivalent — eg. Agencourt™ AMPure™ XP Kit (Beckman Coulter, A63880, A63881, or A63882)

CleanMag Magnetic Beads — Store at 2–8°C

	SKU	Size (Volume)	2 Pool Panel Reactions
CleanMag Magnetic Beads, 1 ml	718001	1 ml	~8
CleanMag Magnetic Beads, 5 ml	718002	5 ml	~44
CleanMag Magnetic Beads, 60 ml	718003	60 ml	~520
CleanMag Magnetic Beads, 450 ml	718004	450 ml	~3,950

- For PCR tubes or strips, CleanMag Magnetic Rack (SKU 719001) or equivalent magnetic racks designed for PCR strip workflows
- For 96-well PCR plates, CleanMag Magnetic Plate (SKU 719002) or equivalent magnetic plates designed for PCR plate workflows

CleanMag Magnetic Rack & Plate

	SKU	Compatibility
CleanMag Magnetic Rack	719001	2 rows of 12 tubes each for PCR strip tubes
CleanMag Magnetic Plate	719002	96 well PCR plates, full or semi- skirted compatible

- 70% ethanol (freshly prepared)
- Nuclease-free water
- Nuclease-free, low bind, thin-wall PCR strip tubes with attached caps, or 96-well PCR plate with adhesive film
- Pipettors and low-retention filtered pipette tips
- Thermal cycler
- Mini-centrifuge, 96-well plate centrifuge
- Qubit® Fluorometer and dsDNA HS (high sensitivity) Assay Kit, or equivalent
- Agilent® 2100 BioAnalyzer® Instrument and Agilent High Sensitivity DNA Kit, or equivalent

Storage, Handling, and Usage

CleanPlex NGS Panels and CleanPlex Indexed PCR Primers are shipped on blue ice (ice packs). Upon receipt, immediately store CleanPlex NGS Panels and CleanPlex Indexed PCR Primers at -20°C in a constant-temperature freezer. Do not store in a freezer with auto-defrost or frost-free features. Do not store at -80°C .

CleanMag Magnetic Beads is shipped at room temperature or on blue ice (ice packs). Upon receipt, immediately store CleanMag Magnetic Beads at 2°C to 8°C in a constant-temperature refrigerator. Do not freeze. Do not store at -20°C .

Always ensure that all frozen components are fully thawed and have been vortexed and spun down to bring all liquids to the bottom of the tubes prior to use.

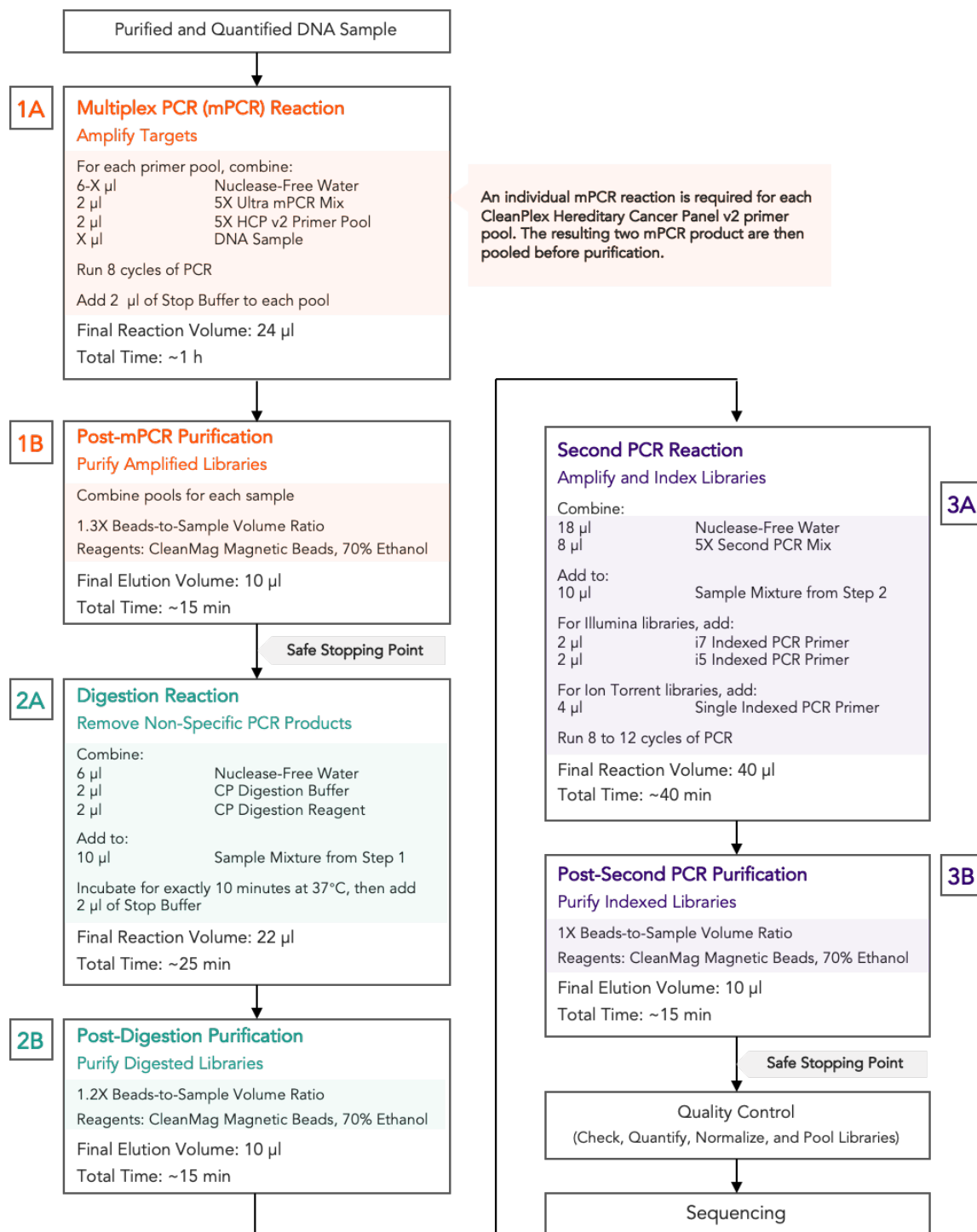
The components containing enzymes (5X Ultra mPCR Mix, CP Digestion Reagent and 5X 2nd PCR Mix) are specially formulated for storage at -20°C without freezing to avoid freeze-thaw cycles to retain their full activity. Please avoid storing these components below -23°C .

CleanPlex NGS Panels are developed, designed and sold exclusively for research use only. None of the products or their individual components have been tested for use in diagnostic procedures.

For hazard information, please refer to the Safety Data Sheet (SDS), which is available upon request.

Workflow

The following diagram illustrates CleanPlex Hereditary Cancer Panel v2's targeted NGS library preparation workflow.



Protocol

Best Practices

- When using the kit for the first time, briefly vortex and spin the tubes in the kit to bring the liquid to the bottom of the tubes. Store the tubes containing enzymes (5X Ultra mPCR Mix, CP Digestion Reagent, 2nd PCR Mix) on ice during their respective procedures. All other components, including primer pools, may be thawed at room temperature, mixed thoroughly by vortexing and spun-down before use.
- Use good laboratory practices to minimize cross-contamination. If possible, perform PCR setup in an isolated area or room to minimize cross-contamination between samples, multiplex PCR (mPCR) primers, or indexed PCR primers. Always change pipette tips between samples and change gloves frequently. Clean all workstations and tools with 10% bleach followed by water, then alcohol at the end of each work day.
- Use a calibrated PCR thermal cycler as specified by the manufacturer's user guide. Validated thermal cyclers include Bio-Rad C1000, Eppendorf Mastercycler series, and Applied Biosystems GeneAmp PCR System 9700. Generally, a thermal cycler set with the highest ramp speed, such as 5°C/second and higher, is not recommended. For thermal cyclers with adjustable ramp speed, we recommend 3°C/second up and 2°C/second down speed, or use the default setting (no ramp adjustment).
- To ensure accurate assembly of reactions, withdraw viscous solution (such as 5X Ultra mPCR Mix, CP Digestion Reagent, and 5X 2nd PCR Mix) slowly from containers and dispense it slowly into the reaction mixtures. A good practice is to remove excess from outside of tip and rinse the tip by pipetting up and down several times after dispensing viscous solutions into aqueous mixture. Thoroughly mix each assembly to ensure solutions are homogeneous prior to PCR and incubations. Remember to briefly spin the PCR tubes or 96-well PCR plate after mixing.
- Always keep working solutions, PCR tubes and plates, and PCR products on ice until needed. Combine PCR mixes just immediately prior to use and do not prolong storage of combined PCR mixes and PCR products.
- The protocol is designed to minimize the number of tube-to-tube transfer in order to avoid or reduce sample loss. For a single-pool CleanPlex NGS Panel, the entire protocol is performed following a single-tube workflow, with no tube-to-tube transfers. For a multi-pool CleanPlex NGS Panel, the individual mPCR products from the primer pool-specific reactions are combined into one tube, and the remaining protocol is carried out using a single-tube workflow.
- When working with 96-well PCR plates, take extra care to ensure thorough mixing of all samples and proper sealing to avoid cross contamination between samples.

- Magnetic bead purification steps should be performed carefully to minimize residual supernatant and ethanol washes, and to minimize bead loss. Using a strong magnetic rack or plate specifically designed for manual handling of PCR tubes or 96-well PCR plates is critical for a successful bead purification
- Always pre-warm thermal cycles, pre-warm a water bath or heat block to 37°C.
- Assign sample indexes to specific samples before starting the protocol.
- Always prepare a master mix of reagents when working with multiplex reactions. Prepare ~5% excess of each master mix to allow for pipetting losses. A master mix calculation sheet can be downloaded from the Product Documents page on the Paragon Genomics website at www.paragongenomics.com/product_documents/.

Input DNA Requirements

Refer to the following chart for the amounts of input DNA.

Panel	DNA Input Range (per pool)	Recommended gDNA Input (per pool)	Recommended FFPE DNA Input (per pool)
CleanPlex Hereditary Cancer Panel v2	5–40 ng	10 ng	20 ng

- The maximum volume of DNA input per Multiplex PCR Reaction is 6 μ l. For the CleanPlex Hereditary Cancer Panel v2, which has 2 primer pools, an individual Multiplex PCR Reaction is required for each primer pool.
- Qubit dsDNA HS Assay Kit (Thermo Fisher, Cat. No. Q32851 or Q32854) or an equivalent fluorometric method is recommended for measuring DNA concentration. UV spectrophotometry methods (e.g. NanoDrop™ spectrophotometer) are not recommended because it can significantly overestimate the DNA concentration.
- 5–40 ng of human genomic DNA from normal or FFPE tissue is recommended for each Multiplex PCR Reaction depending on the panel and application.
- When DNA quality is low or unknown (such as DNA from FFPE tissues), higher DNA input can be used to produce better library quality and reach lower limits of detection.
- Avoid diluting DNA samples to < 10 ng/ μ l for prolonged storage as lower concentrations of DNA are less stable in solution. Avoid freeze-thawing dilute DNA samples when possible, and measure sample concentrations immediately prior to use to avoid inaccurate sample input.

1A. Multiplex PCR (mPCR) Reaction

- 1A.1. Using thin-wall PCR strip tubes (or a 96-well PCR plate), prepare the mPCR Reaction Mixture by adding components in the following order on ice or a cold block. Prepare an individual reaction for each of the two primer pools.

Note: When working with multiple samples, normalize all DNA samples to the same concentration, and prepare a master mix of mPCR Reaction Mixture for each primer pool. Mix well, aliquot into individual tubes, then add DNA samples to each reaction.

Note: When working with multi-pool panels, the recommended amount of DNA is to be added to each pool, and not divided between the pools.

mPCR Reaction Mixture		
Reagent	Cap Color	Volume per reaction (gDNA)
Nuclease-Free Water	—	6 – X μ l
5X Ultra mPCR Mix	Green	2 μ l
5X CleanPlex Hereditary Cancer Panel v2 Primer Pool	Varies	2 μ l
DNA Sample	—	X μ l
Total Volume per reaction		10 μl



Important! 5X Ultra mPCR Mix and 5X CleanPlex Hereditary Cancer Panel v2 Primer Pools are viscous. Pipette slowly, remove any excess reagent on the outside of the pipette tip, and rinse tip in solution when handling these reagents.

- 1A.2. Close the caps of the PCR tubes or seal the PCR plate with adhesive film, spin briefly to bring down the liquid, mix thoroughly by pipetting up and down at least 5 times, or by vortexing vigorously for at least 5 seconds until homogeneous. Avoid unnecessarily prolonged vortexing. Spin briefly to collect the liquid.

Note: It is crucial that the reaction mixture is homogeneous prior to thermal cycling. Incomplete mixing can decrease yield and increase nonspecific product formation.

Note: If using a PCR plate, use an applicator tool to firmly secure each reaction well and around the perimeter of the plate to prevent evaporation during thermal cycling.

- 1A.3. Load the tubes/plate in the thermal cycler and run the following thermal cycling protocol to amplify target DNA regions. Refer to the table below for the mPCR thermal cycling conditions

mPCR Thermal Cycling Protocol				
Step	Temperature	Time	Ramping*	Cycles
Initial Denaturation	98 °C	30 sec	-	-
Denaturation	98 °C	15 sec	3 °C/s	8
Annealing/Extension	60 °C	5 min	2 °C/s	
Hold	10 °C	∞		

* For thermal cyclers without adjustable ramp speed, use the default settings.

- 1A.4. Immediately add 2 µl of Stop Buffer (red cap) into each tube/well and mix by spinning briefly then vortexing. Spin again briefly to collect the liquid. The volume of each sample is approximately 12 µl.

Note: Do not allow samples to hold at 10 °C for longer than 30 minutes before adding Stop Buffer.

- 1A.5. Proceed to Step 1B. Post-mPCR Purification.



Important. Do not stop and store PCR products after multiplex PCR reaction. Add Stop Buffer then proceed to Step 1B, Post-mPCR Purification immediately.

1B. Post-mPCR Purification



Important! Bring magnetic beads to room temperature and vortex thoroughly to disperse the beads before each use. Dispense slowly and carefully. Keep the outside of the pipette free from droplets.



Important! Use freshly prepared 70% ethanol. Prepare the 70% ethanol solution by mixing 100% ethanol with nuclease-free water at volume ratios of 7 parts 100% ethanol 3 parts nuclease-free water. Do not top off one liquid with the other in a volumetric container because the volumetric ratio will not be accurate. When water and ethanol are mixed, the final volume will be less than the sum of individual volumes.

- 1B.1. Open the tubes or carefully remove the adhesive film from the PCR plate. Combine the 12 μ l multiplex PCR products for each sample for a total of 24 μ l volume.
- 1B.2. Vortex the magnetic beads suspension vigorously until homogenous. Perform a **1.3X** bead-based purification by adding magnetic beads to the combined sample as described in the table below. Mix by pipetting up and down at least 5 times or vortex vigorously for at least 5 seconds until homogeneous.

Note: Accurate dispensing of magnetic beads is critical for each purification step. Aspirate and dispense slowly, taking care to completely transfer the required volume of beads and do not allow droplets of beads on the outside of the tip to be added to the sample.

Note: Ensure the mixture is thoroughly mixed before incubation, especially when working in a 96-well PCR plate format. Incomplete mixing can result in lowered yields and/or increased background in the final library.

Post-mPCR Purification — 1.3X Beads-to-Sample Volume Ratio	
Pool 2	
Volume of mPCR Product Mixture per reaction	24 μ l (12 μ l of mPCR Product per pool)
Volume of Magnetic Beads per reaction	31 μ l

- 1B.3. Incubate the mixture for 5 minutes at room temperature.
- 1B.4. Briefly spin the tubes/plate. Place the tubes/plate on a magnetic rack and incubate for at least **2 minutes until the liquid is clear**. The beads will be drawn onto one side of each tube/well. While keeping the tubes/plate on the magnetic rack, carefully remove and discard the supernatant without disturbing the beads.

Note: *If the magnetic beads are aspirated into the pipette tip at any point during the purification process, dispense the solution back into tube, remove the tip, allow the beads to migrate toward the magnet again, then repeat.*

Note: *When working with 96-well PCR plates, avoid touching the side of the well with the pipette tip when removing supernatant to minimize wicking up of liquid to the side of the well.*

Note: *If it takes significantly longer than 2 minutes for the beads to completely clear, your magnetic rack is low performing and you should consider getting a different rack or plate.*

- 1B.5. Cap/seal the tubes/plate, and briefly spin again to bring down the remaining liquid. Place the tubes/plate on the magnetic rack to gather the beads. Using a 10 µl pipette tip, carefully remove all residual supernatant from the bottom of the tube/well without disturbing the beads.

Note: *Removing all residual supernatant from the Multiplex PCR Reaction prior to washing is critical to obtaining a clean, high-quality library.*

Note: *When working with 96-well PCR plates, a strong compatible magnetic plate is essential. If your magnetic rack cannot collect the beads effectively, please look into a replacement.*

- 1B.6. Add 180 µl of freshly prepared 70% ethanol to each tube/well. Remove the tubes/plate from the magnetic rack and place the clear side of the tubes/wells (the side without beads) against the magnet to move the beads from one side of each tube/well to the other. **Do not vortex**. Carefully remove and discard the supernatant without disturbing the beads.

- 1B.7. Repeat step 1B.6.

- 1B.8. After the second wash, briefly spin the tubes/plate to bring down all remaining liquid. Place the tubes/plate on the magnet rack to gather the beads. Carefully remove the residual ethanol in each tube/well. Keeping the tubes/plate on the magnetic rack, air-dry the beads at room temperature for 5 minutes. **Do not over or under dry**.

Note: *Over-dried beads can dislodge from the side of the tube and lead to cross contamination, and they are also more difficult to resuspend during elution. Residual ethanol inhibits PCR and will result in reduced yield. Especially when working with 96-well PCR plates, make sure all residual ethanol is dried (may take longer than 5 minutes) before going to the next step.*

- 1B.9. Add 10 μ l TE buffer to each tube/well. Briefly spin and vortex to resuspend the beads. The DNA will be immediately released from the beads (there is no need to remove the beads). Spin briefly to collect the liquid and the beads.
- 1B.10. Proceed to Step 2A. Digestion Reaction.



Safe Stopping Point. Purified products may be stored at 2-8°C for up to 1 hour or at -20°C for up to 24 hours.

2A. Digestion Reaction

Note: After starting the Digestion Reaction, the samples cannot be stored and must continue to Post-Digestion Purification and Second PCR Reaction. Plan accordingly.

Note: When thawing CP Reagent Buffer, ensure no precipitate is visible. Bring to room temperature and vortex to dissolve the precipitate.

Note: Pre-warm a thermal cycler to 37°C before beginning the Digestion Reaction.

- 2A.1. Prepare Digestion Reaction Master Mix and add to each purified sample from Step 1B. The magnetic beads in the sample mixture do not affect the Digestion Reaction.

Note: When working with multiple reactions, prepare a master mix. Mix well, then add 10 µl of master mix to each sample.

Digestion Reaction Master Mix		
Reagent	Cap Color	Volume per reaction
Nuclease-Free Water	—	6 µl
CP Reagent Buffer	White	2 µl
CP Digestion Reagent	Yellow	2 µl
Total Volume per reaction		10 µl

Digestion Reaction Mixture	
Reagent	Volume per reaction
Digestion Reaction Master Mix	10 µl
Purified Sample from Step 1B	10 µl
Total Volume per reaction	20 µl

- 2A.2. Mix by pipetting up and down at least 5 times or vortex vigorously for at least 5 seconds until homogeneous. Avoid unnecessarily prolonged vortexing. Spin briefly to collect the liquid.

Note: It is crucial that the reaction mixture is homogeneous prior to incubation. Incomplete mixing can cause digestion of the library or under-digestion of nonspecific products.

Note: If using a PCR plate, use an applicator tool to firmly secure each reaction well and around the perimeter of the plate to prevent evaporation during incubation.

- 2A.3. Incubate at 37°C for exactly 10 minutes. **Do not** incubate shorter or longer than 10 minutes.
- 2A.4. Immediately add 2 µl of Stop Buffer (red cap) to each tube/well and mix by spinning briefly then vortexing. Spin again briefly to collect the liquid. The volume of each sample is approximately 22 µl.
- 2A.5. Proceed to Step 2B. Post-Digestion Purification immediately.



Important! Do not stop and store samples after the Digestion Reaction. Proceed to Step 2B. Post-Digestion Purification immediately.

2B. Post-Digestion Purification

- 2B.1. Vortex the magnetic beads suspension to disperse beads. Perform a **1.2X** bead-based purification by adding **26.4 µl** of magnetic beads to each sample. Mix by pipetting up and down least 5 times or vortex vigorously at least 5 seconds until homogeneous.

Note: Accurate dispensing of magnetic beads is critical for each purification step. Aspirate and dispense slowly, taking care to completely transfer the required volume of beads and do not allow droplets of beads on the outside of the tip to be added to the sample.

Note: Ensure the mixture is thoroughly mixed before proceeding, especially when working with 96-well PCR plates.

Post-Digestion Purification — 1.2X Beads-to-Sample Volume Ratio	
Reagent	Volume per reaction
Digestion Reaction Product	22 µl
Magnetic Beads	26.4 µl

- 2B.2. Incubate the mixture for 5 minutes at room temperature.
- 2B.3. Briefly spin the tubes/plate. Place the tubes/plate on a magnetic rack and incubate for at least **2 minutes until the liquid is clear**. The beads will be drawn onto one side of each tube/wall. While keeping the tubes/plate on the magnetic rack, carefully remove and discard the supernatant without disturbing the beads.
- 2B.4. Cap/seal the tubes/plate, and briefly spin again to bring down the remaining liquid. Place the tubes/plate on the magnetic rack to gather the beads. Using a 10 µl pipette tip, carefully remove all residual supernatant from the bottom of the tube/well without disturbing the beads.

Note: Removing all supernatant after the Digestion Reaction is critical to obtaining a clean, high-quality library.

- 2B.5. Add 180 µl of freshly prepared 70% ethanol to each tube/well. Remove the tubes/plate from the magnetic rack and place the clear side of the tubes/wells (the side without beads) against the magnet to move the beads from one side of each tube/well to the other. **Do not vortex**. Carefully remove and discard the supernatant without disturbing the beads.
- 2B.6. Repeat step 2B.5.

- 2B.7. After the second wash, briefly spin the tubes/plate to bring down all remaining liquid. Place the tubes/plate on the magnetic rack to gather the beads. Carefully remove the residual ethanol left behind in each tube/well. Keeping the tubes/plate on the magnetic rack, air-dry the beads at room temperature for 5 minutes. **Do not over or under dry.**

***Note:** Over-dried beads can dislodge from the side of the tube and lead to cross contamination, and they are also more difficult to resuspend during elution. Residual ethanol inhibits PCR and will result in reduced yield. Especially when working with 96-well PCR plates, make sure all residual ethanol is dried (may take longer than 5 minutes) before going to the next step.*

- 2B.8. Add 10 μ l TE buffer to each tube/well. Briefly spin and vortex to resuspend the beads and elute DNA from the beads (there is no need to remove the beads). Spin briefly to collect the liquid.
- 2B.9. Proceed to Step 3A. Second PCR Reaction immediately.



Important! Do not stop and store samples after Post-Digestion Purification. Proceed to Step 3A. Second PCR Reaction immediately.

3A. Second PCR Reaction

Note: Remember to assign a specific index (CleanPlex Single-Indexed PCR Primers for Ion Torrent) or index combination (CleanPlex Dual-Indexed PCR Primers for Illumina) to each sample before starting this step.

- 3A.1. Thaw Indexed PCR Primers, vortex thoroughly, then briefly spin to collect the liquid. Prepare Second PCR Reaction Master Mix and add to each purified sample from Step 2B. Then add a unique (combination of) Indexed PCR Primer(s) to each sample.

Note: When working with multiple samples, prepare a master mix. Mix well, then add 26 μl of master mix to each sample.

Second PCR Reaction Master Mix

Reagent	Cap Color	Volume per reaction
Nuclease-Free Water	—	18 μl
5X 2nd PCR Mix	Blue	8 μl
Total Volume per reaction		26 μl

Second PCR Reaction Mixture

Reagent	Illumina Volume per reaction	Ion Torrent Volume per reaction
Second PCR Reaction Master Mix	26 μl	26 μl
Purified Sample from Step 2B	10 μl	10 μl
i5 Indexed PCR Primer for Illumina	2 μl	—
i7 Indexed PCR Primer for Illumina	2 μl	—
Single-Indexed PCR Primer for Ion Torrent	—	4 μl
Total Volume per reaction	40 μl	40 μl



Important! When handling Indexed PCR Primers, take extra care to prevent cross contamination by opening one tube at a time and changing pipette tips and gloves as necessary. Avoid touching the opening and inside of the tubes with your hands, pipette channel, or anything non-disposable.

- 3A.2. Close the caps of the PCR tubes or seal the PCR plate with adhesive film. Spin briefly to collect the liquid, then mix thoroughly by pipetting up and down at least 5 times, or by vortexing vigorously for at least 5 seconds or until homogeneous. Avoid unnecessarily prolonged vortexing. Spin briefly to collect the liquid.

Note: It is crucial that the reaction mixture is homogeneous prior to thermal cycling. Incomplete mixing can cause decreased yield and increase non-specific product formation.

Note: If using a PCR plate, use an applicator tool to firmly secure each reaction well and around the perimeter of the plate to prevent evaporation during thermal cycling.

- 3A.3. Load the tubes/plate in the thermal cycler, and run the following thermal cycling protocol to amplify and index the libraries. The Second PCR thermal cycling protocol depends on the starting DNA input amount and DNA quality. Generally, lower quality DNA or lower DNA input amount requires more PCR cycles. See tables below for thermal cycling protocol and cycle number suggestions for CleanPlex Hereditary Cancer Panel v2.

Note: Use the amount of DNA input per primer pool to determine the correct cycles, not the combined DNA input from all pools. For example, if 10 ng of DNA was added to each of the two primer pools of the CleanPlex Hereditary Cancer Panel v2, use 10 ng to determine the Second PCR cycle number.

Second PCR Reaction — Thermal Cycling Protocol

Step	Temperature		Time	Ramping*	Cycles
Initial Denaturation	95 °C		10 min	-	1
Denaturation	98 °C		15 sec	3 °C/s	10**
Annealing/Extension	Illumina 60 °C	Ion Torrent 68 °C	75 sec	2 °C/s	
Hold	10 °C		∞		

* For thermal cyclers without adjustable ramp speed, use the default settings.

** When using 10 ng of high quality gDNA.

Second PCR Reaction — Input Specific Cycle Number

Input DNA per pool	Change in Cycle Number
5 ng	+ 1
10 ng	-
20 ng	- 1
40 ng	- 2
Low Quality DNA (eg. FFPE DNA)	+ 1 to + 2

- 3A.4. Proceed to Step 3B. Post-Second PCR Purification immediately after cycle completion. Do NOT allow PCR product to hold at 10 °C for more than 30 minutes.



Important. Do not stop and store PCR product after Second PCR. Proceed to 3B, Post-Second PCR purification immediately.

3B. Post-Second PCR Purification

- 3B.1. Vortex the magnetic beads suspension to disperse beads. Perform a **1X** bead-based purification by adding **40 µl** of magnetic beads to each sample. Mix by pipetting up and down at least 5 times or by vortexing vigorously for at least 5 seconds until homogeneous.

Note: Accurate dispensing of magnetic beads is critical for each purification step. Aspirate and dispense slowly, taking care to completely transfer the required volume of beads and do not allow droplets of beads on the outside of the tip to be added to the sample.

Note: Ensure the solution is thoroughly mixed before proceeding.

Post-Second PCR Purification — 1X Beads-to-Sample Volume Ratio	
Reagent	Volume per reaction
Magnetic Beads	40 µl
Second PCR Reaction Product	40 µl

- 3B.2. Incubate the mixture for 5 minutes at room temperature.
- 3B.3. Briefly spin the tubes/plate. Place the tubes/plate on a magnetic rack and incubate for at least **2 minutes until the liquid is clear**. The beads will be drawn onto one side of each tube/wall. While keeping the tubes/plate on the magnetic rack, carefully remove and discard the supernatant without disturbing the beads.
- 3B.4. Cap/seal the tubes/plate, and briefly spin again to bring down the remaining liquid. Place the tubes/plate on the magnetic rack to gather the beads. Using a 10 µl pipette tip, carefully remove all residual supernatant from the bottom of the tube/well without disturbing the beads.
- Note:** Removing all supernatant is critical in obtaining a clean, high-quality library.
- 3B.5. Add 180 µl of freshly prepared 70% ethanol to each tube/well. Remove the tubes/plate from the magnetic rack and place the clear side of the tubes/wells (the side without beads) against the magnet to move the beads from one side of the tube/well to the other. **Do not vortex**. Carefully remove and discard the supernatant without disturbing the beads.
- 3B.6. Repeat step 3B.5.

- 3B.7. After the second wash, briefly spin the tubes/plate to bring down all remaining liquid. Place the tubes/plate on the magnetic rack to gather the beads. Carefully remove the residual ethanol left behind in each tubes/well. Keeping the tubes/plate on the magnetic rack, air-dry the beads at room temperature for 5 minutes. **Do not over or under dry.**

Note: *Over-drying and under-drying the beads can lead to reduced yield.*

- 3B.8. Add 10 μ l TE buffer to each tube/well. Briefly spin and vortex to resuspend the beads and elute DNA from the beads. Spin briefly to collect the liquid. At this point the library is complete and can be stored with beads at -20°C .

Note: *To perform QC and sequencing, use a magnetic rack to separate the beads. Avoid transferring the beads when pipetting the clear supernatant for QC or sequencing.*



Safe Stopping Point. Purified products may be stored with beads at -20°C until ready to sequence. When taking the library out for QC and sequencing, vortex briefly and place the tubes or plate on a magnetic rack to pull the beads to one side. Avoid pipetting the beads.

Quality Control Prior to Sequencing

Check library quality and concentration using an Agilent 2100 BioAnalyzer Instrument and Agilent High Sensitivity DNA Kit, or a qPCR-based method. The final library can also be measured using a Qubit Fluorometer; however, this method will not differentiate potential background from the actual library. To confirm the quality of the DNA, it is highly recommended that a **high sensitivity** fragment analyzer is used to visualize the peak shape, size, and potential background concentration.

Using the concentrations of the library peak(s) only, normalize and pool samples of different index combinations for sequencing.

Recommended Sequencing Length and Depth

CleanPlex Hereditary Cancer Panel v2 is designed to be compatible with PE 150 bp reads (2x150 bp). For germline mutation detection, the recommended average sequencing read depth is 250X (or 500X paired-end reads)

For recommended sample multiplexing on various Illumina NGS instruments, refer to panel-specific product sheets at www.paragongenomics.com/product_documents/.

Supporting Information

Dual-Indexed PCR Primers for Illumina

Primer Sequences

Each sample is indexed by a pair of Indexed PCR Primers for sequencing on Illumina platforms. XXXXXXXX denotes the index region of the primer. Index sequences are listed below.

i5 Indexed Primer

5' -AATGATACGGCGACCACCGAGATCTACACXXXXXXXXACACTCTTTCCCTACACGACGCTCTTCCGATC*T-3'

i7 Indexed Primer

5' -CAAGCAGAAGACGGCATAACGAGATXXXXXXXXGTGACTGGAGTTCAGACGTGTGCTCTTCCGATC*T-3'

Index Sequences

CleanPlex Dual-Indexed PCR Primers for Illumina Set A1
4 x 4 indexes, 16 reactions (SKU 716005)

i7 Index	Index Sequence	17 Bases for Sample Sheet All Illumina Systems	i5 Index	Index Sequence	i5 Bases for Sample Sheet	
					MiSeq, NovaSeq, HiSeq 2000/2500	MiniSeq, NextSeq, HiSeq 3000/4000
A701	GTCGTGAT	ATCACGAC	A501	TGAACCTT	TGAACCTT	AAGGTTCA
A702	ACCACTGT	ACAGTGGT	A502	TGCTAAGT	TGCTAAGT	ACTTAGCA
A703	TGGATCTG	CAGATCCA	A503	TGTTCTCT	TGTTCTCT	AGAGAACA
A704	CCGTTTGT	ACAAACGG	A504	TAAGACAC	TAAGACAC	GTGTCTTA

CleanPlex Dual-Indexed PCR Primers for Illumina Set A

12 x 8 indexes, 96 reactions (SKU 716006)

12 x 8 indexes, 384 reactions (SKU 716017)

i7 Index	Index Sequence	17 Bases for Sample Sheet All Illumina Systems	i5 Index	Index Sequence	i5 Bases for Sample Sheet	
					MiSeq, NovaSeq, HiSeq 2000/2500	MiniSeq, NextSeq, HiSeq 3000/4000
A701	GTCGTGAT	ATCACGAC	A501	TGAACCTT	TGAACCTT	AAGGTTCA
A702	ACCACTGT	ACAGTGGT	A502	TGCTAAGT	TGCTAAGT	ACTTAGCA
A703	TGGATCTG	CAGATCCA	A503	TGTTCTCT	TGTTCTCT	AGAGAACA
A704	CCGTTTGT	ACAAACGG	A504	TAAGACAC	TAAGACAC	GTGTCTTA
A705	TGCTGGGT	ACCCAGCA	A505	CTAATCGA	CTAATCGA	TCGATTAG
A706	GAGGGGTT	AACCCCTC	A506	CTAGAACA	CTAGAACA	TGTTCTAG
A707	AGGTTGGG	CCCAACCT	A507	TAAGTTCC	TAAGTTCC	GGAACCTA
A708	GTGTGGTG	CACCACAC	A508	TAGACCTA	TAGACCTA	TAGGTCTA
A709	TGGGTTTC	GAAACCCA				
A710	TGGTCACA	TGTGACCA				
A711	TTGACCCT	AGGGTCAA				
A712	CCACTCCT	AGGAGTGG				

CleanPlex Dual-Indexed PCR Primers for Illumina Set B

12 x 8 indexes, 96 reactions (SKU 716018)

12 x 8 indexes, 384 reactions (SKU 716019)

i7 Index	Index Sequence	I7 Bases for Sample Sheet All Illumina Systems	i5 Index	Index Sequence	i5 Bases for Sample Sheet	
					MiSeq, NovaSeq, HiSeq 2000/2500	MiniSeq, NextSeq, HiSeq 3000/4000
Q7005	ATATTCAC	GTGAATAT	Q5001	AGCGCTAG	AGCGCTAG	CTAGCGCT
Q7006	GCGCCTGT	ACAGGCGC	Q5002	GATATCGA	GATATCGA	TCGATATC
Q7007	ACTCTATG	CATAGAGT	Q5007	ACATAGCG	ACATAGCG	CGCTATGT
Q7008	GTCTCGCA	TGCGAGAC	Q5008	GTGCGATA	GTGCGATA	TATCGCAC
Q7015	AGTAGAGA	TCTCTACT	Q5009	CCAACAGA	CCAACAGA	TCTGTTGG
Q7016	GACGAGAG	CTCTCGTC	Q5010	TTGGTGAG	TTGGTGAG	CTCACCAA
Q7017	AGACTTGG	CCAAGTCT	Q5013	AACCGCGG	AACCGCGG	CCGCGGTT
Q7018	GAGTCCAA	TTGGACTC	Q5014	GGTTATAA	GGTTATAA	TTATAACC
Q7023	AATTCTGC	GCAGAATT				
Q7024	GGCCTCAT	ATGAGGCC				
Q7025	ATCTTAGT	ACTAAGAT				
Q7026	GCTCCGAC	GTCGGAGC				

Single-Indexed PCR Primers for Ion Torrent

Primer Sequences

Each sample is indexed by two pairs of Indexed PCR Primers for sequencing on Ion Torrent platforms. XXXXXXXXXX denotes the index region of the primer. Index sequences are listed below.

Indexed PCR Primers

5' -CCATCTCATCCCTGCGTGTCTCCGACTCAGXXXXXXXXXXCGATTTTCAGACGTGTGCTCTTCCGATC*T-3'

5' -CCATCTCATCCCTGCGTGTCTCCGACTCAGXXXXXXXXXXCGATCCTACACGACGCTCTTCCGATC*T-3'

Universal PCR Primers

5' -CCGCTTTCCTCTCTATGGGCAGTCGGTGATTTTCAGACGTGTGCTCTTCCGATC*T-3'

5' -CCGCTTTCCTCTCTATGGGCAGTCGGTGATCCTACACGACGCTCTTCCGATC*T-3'

Index Sequences

CleanPlex Single-Indexed PCR Primers for Ion Torrent Sets A and B contain index sequences identical to the sequences of the equivalent Ion Xpress™ barcodes. These indexed PCR primers are provided in individual tubes.

CleanPlex Single-Indexed PCR Primers for Ion Torrent Set A 16 indexes, 32 reactions (SKU 716007) 16 indexes, 96 reactions (SKU 716008)		CleanPlex Single-Indexed PCR Primers for Ion Torrent Set B 16 indexes, 32 reactions (SKU 716009) 16 indexes, 96 reactions (SKU 716010)	
Index	Index Sequence	Index	Index Sequence
1	CTAAGGTAAC	17	TCTATTCGTC
2	TAAGGAGAAC	18	AGGCAATTGC
3	AAGAGGATTC	19	TTAGTCGGAC
4	TACCAAGATC	20	CAGATCCATC
5	CAGAAGGAAC	21	TCGCAATTAC
6	CTGCAAGTTC	22	TTCGAGACGC
7	TTCGTGATTC	23	TGCCACGAAC
8	TTCCGATAAC	24	AACCTCATTC
9	TGAGCGGAAC	25	CCTGAGATAC
10	CTGACCGAAC	26	TTACAACCTC
11	TCCTCGAATC	27	AACCATCCGC
12	TAGGTGGTTC	28	ATCCGGAATC
13	TCTAACGGAC	29	TCGACCACTC
14	TTGGAGTGTC	30	CGAGGTTATC
15	TCTAGAGGTC	31	TCCAAGCTGC
16	TCTGGATGAC	32	TCTTACACAC

CleanPlex Single-Indexed PCR Primers for Ion Torrent Sets C, D, E, and F contain index sequences identical to the sequences of the equivalent IonCode™ barcodes. These indexed PCR primers are provided in sealed 96-well PCR plates and arranged in ascending order in columns.

CleanPlex Single-Indexed PCR Primers for Ion Torrent Set C – Plate Layout

	1	2	3	4	5	6	7	8	9	10	11	12
A	1	9	17	25	33	41	49	57	65	73	81	89
B	2	10	18	26	34	42	50	58	66	74	82	90
C	3	11	19	27	35	43	51	59	67	75	83	91
D	4	12	20	28	36	44	52	60	68	76	84	92
E	5	13	21	29	37	45	53	61	69	77	85	93
F	6	14	22	30	38	46	54	62	70	78	86	94
G	7	15	23	31	39	47	55	63	71	79	87	95
H	8	16	24	32	40	48	56	64	72	80	88	96

CleanPlex Single-Indexed PCR Primers for Ion Torrent Set C					
96 Indexes, 192 reactions (SKU 716025)					
96 Indexes, 960 reactions (SKU 716029)					
Index	Index Sequence	Adapter	Index	Index Sequence	Adapter
1	CTAAGGTAAC	GGTGAT	25	CCTGAGATAC	GGTGAT
2	TAAGGAGAAC	GGTGAT	26	TTACAACCTC	GGTGAT
3	AAGAGGATTC	GGTGAT	27	AACCATCCGC	GGTGAT
4	TACCAAGATC	GGTGAT	28	ATCCGGAATC	GGTGAT
5	CAGAAGGAAC	GGTGAT	29	CGAGGTTATC	GGTGAT
6	CTGCAAGTTC	GGTGAT	30	TCCAAGCTGC	GGTGAT
7	TTCGTGATTC	GGTGAT	31	TCTTACACAC	GGTGAT
8	TTCCGATAAC	GGTGAT	32	TTCTCATTGAAC	GGTGAT
9	TGAGCGGAAC	GGTGAT	33	TCGCATCGTTC	GGTGAT
10	CTGACCGAAC	GGTGAT	34	TAAGCCATTGTC	GGTGAT
11	TCCTCGAATC	GGTGAT	35	CTTGAGAATGTC	GGTGAT
12	TAGGTGGTTC	GGTGAT	36	TGGAGGACGGAC	GGTGAT
13	TCTAACGGAC	GGTGAT	37	TAACAATCGGC	GGTGAT
14	TTGGAGTGTC	GGTGAT	38	CTGACATAATC	GGTGAT
15	TCTAGAGGTC	GGTGAT	39	TTCCACTTCGC	GGTGAT
16	TCTGGATGAC	GGTGAT	40	AGCACGAATC	GGTGAT
17	TCTATTCGTC	GGTGAT	41	TTGGAGGCCAGC	GGTGAT
18	AGGCAATTGC	GGTGAT	42	TGGAGCTTCCTC	GGTGAT
19	TTAGTCGGAC	GGTGAT	43	TCAGTCCGAAC	GGTGAT
20	CAGATCCATC	GGTGAT	44	TAAGGCAACCAC	GGTGAT
21	TCGCAATTAC	GGTGAT	45	TTCTAAGAGAC	GGTGAT
22	TTCGAGACGC	GGTGAT	46	TCCTAACATAAC	GGTGAT
23	TGCCACGAAC	GGTGAT	47	CGGACAATGGC	GGTGAT
24	AACCTCATTTC	GGTGAT	48	TTGAGCCTATTTC	GGTGAT

CleanPlex Single-Indexed PCR Primers for Ion Torrent Set C (Continued)					
Index	Index Sequence	Adapter	Index	Index Sequence	Adapter
49	CCGCATGGAAC	GGTGAT	73	CTAGGACATTC	GGTGAT
50	CTGGCAATCCTC	GGTGAT	74	CTTCCATAAC	GGTGAT
51	TCCACCTCCTC	GGTGAT	75	CCAGCCTCAAC	GGTGAT
52	CAGCATTAAATTC	GGTGAT	76	CTTGGTTATTC	GGTGAT
53	TCCTTGATGTTTC	GGTGAT	77	TTGGCTGGAC	GGTGAT
54	TCTAGCTCTTC	GGTGAT	78	TCCTGAATCTC	GGTGAT
55	TCACTCGGATC	GGTGAT	79	CTAACCACGGC	GGTGAT
56	TTCCTGCTTCAC	GGTGAT	80	CGGAAGGATGC	GGTGAT
57	CCTTAGAGTTC	GGTGAT	81	CTTGTCCAATC	GGTGAT
58	CTGAGTTCGGAC	GGTGAT	82	TCCGACAAGC	GGTGAT
59	TCCTGGCACATC	GGTGAT	83	CGGACAGATC	GGTGAT
60	CCGCAATCATC	GGTGAT	84	CCTTGAGGCGGC	GGTGAT
61	TTCAATTGGC	GGTGAT	85	TTCTTCCTCTTC	GGTGAT
62	CCTACTGGTC	GGTGAT	86	TTCTTCAAGATC	GGTGAT
63	TGAGGCTCCGAC	GGTGAT	87	CTTGGAACTGTC	GGTGAT
64	CGAAGGCCACAC	GGTGAT	88	TCGGCCGGAATC	GGTGAT
65	TCTGCCTGTC	GGTGAT	89	TGGAGATAATTC	GGTGAT
66	CGATCGGTTC	GGTGAT	90	TGAATTCCGGAC	GGTGAT
67	TCAGGAATAC	GGTGAT	91	CTTGCCACCGTC	GGTGAT
68	CGGAAGAACCTC	GGTGAT	92	CTAACAATTCAC	GGTGAT
69	CGAAGCGATTC	GGTGAT	93	TTCGCAATGAAC	GGTGAT
70	CAGCCAATTCTC	GGTGAT	94	TTCCGCACGGC	GGTGAT
71	TCGAAGGCAGGC	GGTGAT	95	TTGGCCAATTGC	GGTGAT
72	CCTGCCATTCGC	GGTGAT	96	TCTAGTTCAAC	GGTGAT

CleanPlex Single-Indexed PCR Primers for Ion Torrent Set D – Plate Layout

	1	2	3	4	5	6	7	8	9	10	11	12
A	97	105	113	121	129	137	145	153	161	169	177	185
B	98	106	114	122	130	138	146	154	162	170	178	186
C	99	107	115	123	131	139	147	155	163	171	179	187
D	100	108	116	124	132	140	148	156	164	172	180	188
E	101	109	117	125	133	141	149	157	165	173	181	189
F	102	110	118	126	134	142	150	158	166	174	182	190
G	103	111	119	127	135	143	151	159	167	175	183	191
H	104	112	120	128	136	144	152	160	168	176	184	192

CleanPlex Single-Indexed PCR Primers for Ion Torrent Set D

96 Indexes, 192 reactions (SKU 716026)

96 Indexes, 960 reactions (SKU 716030)

Index	Index Sequence	Adapter	Index	Index Sequence	Adapter
97	TGAGAAGAATTC	GGTGAT	121	CCAAGGCGAATC	GGTGAT
98	CCTCAACCATC	GGTGAT	122	CTTAGATCGGTC	GGTGAT
99	CCTGCTGGATTC	GGTGAT	123	CCGGTCCGATTC	GGTGAT
100	TGGCAGGAATTC	GGTGAT	124	TTGGAGCGAC	GGTGAT
101	CGCTTCGATTC	GGTGAT	125	CTTGTTCCGGC	GGTGAT
102	TTCCAGATTGC	GGTGAT	126	TCCGGCAAGATC	GGTGAT
103	TCCGGAGTCTTC	GGTGAT	127	TTCTATCCGAC	GGTGAT
104	GCAACACGAC	GGTGAT	128	CTAATTGAATC	GGTGAT
105	TAAGCAATTCTC	GGTGAT	129	TTCGACACCAC	GGTGAT
106	CTGATCCATTC	GGTGAT	130	CCAGTTCCTC	GGTGAT
107	TAGGAACAATC	GGTGAT	131	TAACAATAATTC	GGTGAT
108	AACCGGAATTC	GGTGAT	132	CTGAAGTCGGAC	GGTGAT
109	CCGGAGGTAATC	GGTGAT	133	AAGGAATGGAAC	GGTGAT
110	TTCAGGACCTTC	GGTGAT	134	TTCCGAACCGAC	GGTGAT
111	TCTAACCAATGC	GGTGAT	135	TTCACCAGGATC	GGTGAT
112	TCCGAGCTGATC	GGTGAT	136	CTACAACCTC	GGTGAT
113	TTACCATGTTC	GGTGAT	137	CTGAGGCATCAC	GGTGAT
114	CTCATTCCGGTC	GGTGAT	138	CCAGCATCATTC	GGTGAT
115	TCGAGGCCTGGC	GGTGAT	139	CCGGCTTGAAC	GGTGAT
116	TGGAAGGTTGC	GGTGAT	140	TCAGGCAGATTC	GGTGAT
117	TAGGATTCCGAC	GGTGAT	141	TTCTGCACGATC	GGTGAT
118	TTGAAGCTCCGC	GGTGAT	142	TCCGAAGATAAC	GGTGAT
119	TTCAACTTCTTC	GGTGAT	143	CCTCATCGTTC	GGTGAT
120	TTAGGCTCAAC	GGTGAT	144	TGCAACCAAC	GGTGAT

CleanPlex Single-Indexed PCR Primers for Ion Torrent Set D (Continued)					
Index	Index Sequence	Adapter	Index	Index Sequence	Adapter
145	CGGAATCCGGTC	GGTGAT	169	CTTAAGGCTGAC	GGTGAT
146	TCTTGAGGAAGC	GGTGAT	170	CTGGAGAACCAC	GGTGAT
147	CCGCCACCAATC	GGTGAT	171	TACTTGGAATC	GGTGAT
148	AAGGTTATTC	GGTGAT	172	CTAGGCCTCCTC	GGTGAT
149	TCTCCATCAATC	GGTGAT	173	CCGAGAACAAC	GGTGAT
150	TGGAGCCAACAC	GGTGAT	174	TTAAGACGTC	GGTGAT
151	TCTAATCGATTC	GGTGAT	175	TGGCTTCATC	GGTGAT
152	CCACCAATAC	GGTGAT	176	CGAACAATTGTC	GGTGAT
153	CTTGATTTCGAC	GGTGAT	177	TTCAAGGTGTTT	GGTGAT
154	TTCTGGATTATC	GGTGAT	178	CTTAACCACCAC	GGTGAT
155	TTCTTCTGGC	GGTGAT	179	TCCGGACCGTTC	GGTGAT
156	TCCTGAGACTC	GGTGAT	180	CCTTGAGCATGC	GGTGAT
157	CTGGAACAAGAC	GGTGAT	181	TCTTAGATATTC	GGTGAT
158	TCTTGCTTAATC	GGTGAT	182	CCTGAATTAC	GGTGAT
159	CTCCAATTGGAC	GGTGAT	183	AAGCCAACCAAC	GGTGAT
160	CTAAGGAAGGTC	GGTGAT	184	TCTGGCAACGGC	GGTGAT
161	TGAAGGCACCTC	GGTGAT	185	CTAGGAACCGC	GGTGAT
162	ACAATCCGGTTC	GGTGAT	186	TTAAGCGGTC	GGTGAT
163	TCCTTACAGAAC	GGTGAT	187	TTGGCATCTC	GGTGAT
164	TGAATCGAAC	GGTGAT	188	TTGGTTCCAAC	GGTGAT
165	CTTGAAGCCGTC	GGTGAT	189	TTAGGCTGATTC	GGTGAT
166	TTGAGATCAATC	GGTGAT	190	TGGAACCACGTC	GGTGAT
167	CAGCAATTCGAC	GGTGAT	191	AGGCAACGGAAC	GGTGAT
168	CGAAGCTAATC	GGTGAT	192	TCCTCCTCCAC	GGTGAT

CleanPlex Single-Indexed PCR Primers for Ion Torrent Set E – Plate Layout

	1	2	3	4	5	6	7	8	9	10	11	12
A	193	201	209	217	225	233	241	249	257	265	273	281
B	194	202	210	218	226	234	242	250	258	266	274	282
C	195	203	211	219	227	235	243	251	259	267	275	283
D	196	204	212	220	228	236	244	252	260	268	276	284
E	197	205	213	221	229	237	245	253	261	269	277	285
F	198	206	214	222	230	238	246	254	262	270	278	286
G	199	207	215	223	231	239	247	255	263	271	279	287
H	200	208	216	224	232	240	248	256	264	272	280	288

CleanPlex Single-Indexed PCR Primers for Ion Torrent Set E

96 Indexes, 192 reactions (SKU 716027)

96 Indexes, 960 reactions (SKU 716031)

Index	Index Sequence	Adapter	Index	Index Sequence	Adapter
193	TCTCATTCAATC	GGTGAT	217	TCTTAGGTAATC	GGTGAT
194	TTCGGAACGTTC	GGTGAT	218	TCCAGGCTTATC	GGTGAT
195	TTAAGATTATC	GGTGAT	219	TGAATTCTTC	GGTGAT
196	CCTTATGGATTC	GGTGAT	220	AAGGCCTCGAAC	GGTGAT
197	CTTGAACAGGTC	GGTGAT	221	TTCCTTCAACAC	GGTGAT
198	CCGAACCTATC	GGTGAT	222	TGGTTGGATTC	GGTGAT
199	CCAGGACGTC	GGTGAT	223	CGGCAACATTC	GGTGAT
200	CCTTGTCGTC	GGTGAT	224	TGCATTCGCGTC	GGTGAT
201	CCTGGCTCAATC	GGTGAT	225	CGGAAGCATCAC	GGTGAT
202	CTGAGGCTTGTC	GGTGAT	226	CTTGGAGTCCTC	GGTGAT
203	CCGAACCAACGC	GGTGAT	227	CGGACCACGGAC	GGTGAT
204	CCTAGATTAATC	GGTGAT	228	TTGCCAACCGGC	GGTGAT
205	TCAACCACAAC	GGTGAT	229	CTGTTCGAAC	GGTGAT
206	AGGCCATTGATC	GGTGAT	230	CCGAGTGGTC	GGTGAT
207	TCGAGAATCGGC	GGTGAT	231	CAAGGCTTCCAC	GGTGAT
208	TTCTGCCACTTC	GGTGAT	232	TCTTCATGAATC	GGTGAT
209	CTAAGCCATCTC	GGTGAT	233	TTGACATTAATC	GGTGAT
210	CCTTAGCTCGGC	GGTGAT	234	TCAGGCCGAAC	GGTGAT
211	TCTTAGGACGGC	GGTGAT	235	TTCCGCATTGAC	GGTGAT
212	CTTGCAATGGAC	GGTGAT	236	TGGAAGGTCCAC	GGTGAT
213	TCTAATGGTC	GGTGAT	237	TTAGCAACATTC	GGTGAT
214	CCTCCACGATC	GGTGAT	238	TCTTAGCGATC	GGTGAT
215	CCTAAGGCAGGC	GGTGAT	239	AAGCAATCCATC	GGTGAT
216	TCTGGAAGTCGC	GGTGAT	240	CCAAGTTGTTC	GGTGAT

CleanPlex Single-Indexed PCR Primers for Ion Torrent Set E (Continued)					
Index	Index Sequence	Adapter	Index	Index Sequence	Adapter
241	TGGACTCAATTC	GGTGAT	265	TCCTGGAGTAAC	GGTGAT
242	TCTGTAATTC	GGTGAT	266	TGACCAATCCAC	GGTGAT
243	TTGAAGGATCGC	GGTGAT	267	TGGAGGCCGGTC	GGTGAT
244	TTCTACCGGC	GGTGAT	268	TAGCATCCGGC	GGTGAT
245	TGGAAGAAGGAC	GGTGAT	269	TAAGTCGATC	GGTGAT
246	CCTGCCGGAATC	GGTGAT	270	TCGGCCATAC	GGTGAT
247	CGGCCTTCGGTC	GGTGAT	271	TTCCAATCCGTC	GGTGAT
248	CCTTGGCCTGGC	GGTGAT	272	TAGAATTCGGTC	GGTGAT
249	CTAGTCGAATTC	GGTGAT	273	CGAGATGAAC	GGTGAT
250	TAGACGGAATTC	GGTGAT	274	CCTGGTTGTC	GGTGAT
251	TCCTCCAAGTTC	GGTGAT	275	TTCTGAGCGTTC	GGTGAT
252	CCTAAGCTAC	GGTGAT	276	TCCAAGGACAC	GGTGAT
253	CTAACCGATTC	GGTGAT	277	CCAAGCAACGGC	GGTGAT
254	CCACATCGAAC	GGTGAT	278	TTCTTAAGTATC	GGTGAT
255	TCTTCCTTCCGC	GGTGAT	279	TTCGACTCGTC	GGTGAT
256	TGGACAATTGAC	GGTGAT	280	TCCGGAACTAC	GGTGAT
257	TTAGCCTTAAC	GGTGAT	281	CGGCCTCAATTC	GGTGAT
258	TCACCTCGTTC	GGTGAT	282	CAGCCTCCGGAC	GGTGAT
259	TCTGACATTCGC	GGTGAT	283	TCTGACGGAATC	GGTGAT
260	TCCGCTCGGAC	GGTGAT	284	TCCTTATTGAC	GGTGAT
261	TTCTTGATCATC	GGTGAT	285	TTCTCCATTATC	GGTGAT
262	CTGACTCCGGC	GGTGAT	286	AACTTCCGGATC	GGTGAT
263	GAAGATCTTC	GGTGAT	287	TCCACAATTAAC	GGTGAT
264	TTCCGAAGTCAC	GGTGAT	288	AAGGCTCGGTTC	GGTGAT

CleanPlex Single-Indexed PCR Primers for Ion Torrent Set F – Plate Layout

	1	2	3	4	5	6	7	8	9	10	11	12
A	289	297	305	313	321	329	337	345	353	361	369	377
B	290	298	306	314	322	330	338	346	354	362	370	378
C	291	299	307	315	323	331	339	347	355	363	371	379
D	292	300	308	316	324	332	340	348	356	364	372	380
E	293	301	309	317	325	333	341	349	357	365	373	381
F	294	302	310	318	326	334	342	350	358	366	374	382
G	295	303	311	319	327	335	343	351	359	367	375	383
H	296	304	312	320	328	336	344	352	360	368	376	384

CleanPlex Single-Indexed PCR Primers for Ion Torrent Set F

96 Indexes, 192 reactions (SKU 716028)

96 Indexes, 960 reactions (SKU 716032)

Index	Index Sequence	Adapter	Index	Index Sequence	Adapter
289	CCGAGTCGATTC	GGTGAT	313	TCTTCAGGATTC	GGTGAT
290	TTCTTCACCAAC	GGTGAT	314	TTCTTGGTCCAC	GGTGAT
291	CTAGGCCAGGAC	GGTGAT	315	TTCTTGCCGTC	GGTGAT
292	CCTGAAGGCTGC	GGTGAT	316	CTTAGGCAAGTC	GGTGAT
293	CTTGAAGGTCTC	GGTGAT	317	CGAGGATCCGTC	GGTGAT
294	CTCTCCGATTC	GGTGAT	318	TCCTCTTCTC	GGTGAT
295	CTTAACATCCTC	GGTGAT	319	TCGAAGCTTCGC	GGTGAT
296	TTGAATGGTC	GGTGAT	320	CTAAGGTTCGAC	GGTGAT
297	TGAGGAATTCAC	GGTGAT	321	TTAGGAATCCGC	GGTGAT
298	TGGAAGCAAGTC	GGTGAT	322	TGGCCAATCGAC	GGTGAT
299	CTGAGCAATCTC	GGTGAT	323	CTTAAGCATTAC	GGTGAT
300	TCCAGCCATATC	GGTGAT	324	TTCTCTAATTC	GGTGAT
301	CCTTACTCATC	GGTGAT	325	CTTCCATTTCGAC	GGTGAT
302	TCCTTCCACTTC	GGTGAT	326	CCTACAAGATTC	GGTGAT
303	TGAACCATTGAC	GGTGAT	327	TCTTGAAGATGC	GGTGAT
304	TTAGGATCATTC	GGTGAT	328	TGAAGCCATCTC	GGTGAT
305	TTCCAATTCCAC	GGTGAT	329	CTAAGCTTGGTC	GGTGAT
306	TTCTGGTTCTTC	GGTGAT	330	CTTGGATAAC	GGTGAT
307	TTCTGTCCGC	GGTGAT	331	CAAGCCACCGTC	GGTGAT
308	TCCGAAGAGATC	GGTGAT	332	CCTAGGTCTTC	GGTGAT
309	TTACACGGAC	GGTGAT	333	TTGACTTCCGGC	GGTGAT
310	TAAGTCCAATTC	GGTGAT	334	CCAGACCGAAC	GGTGAT
311	TAAGATTCCGGC	GGTGAT	335	TCTAGCCATCGC	GGTGAT
312	AGGCCTAATTC	GGTGAT	336	CGCCAAGAATC	GGTGAT

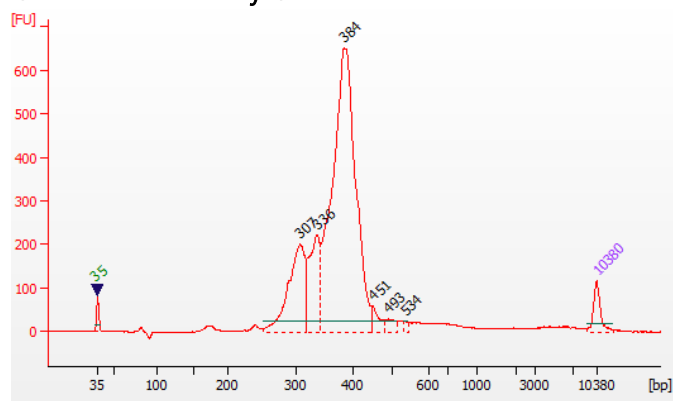
CleanPlex Single-Indexed PCR Primers for Ion Torrent Set F (Continued)					
Index	Index Sequence	Adapter	Index	Index Sequence	Adapter
337	TGAGGCATGGTC	GGTGAT	361	TTCATTCCGTTTC	GGTGAT
338	CGAGATTCGGAC	GGTGAT	362	CTGGCATCGGAC	GGTGAT
339	TCAACCTGATC	GGTGAT	363	CTTGACCTGGTC	GGTGAT
340	TCCTGAGGTATC	GGTGAT	364	TTCTACCTCAAC	GGTGAT
341	AAGATGAATC	GGTGAT	365	AAGGAATCGTC	GGTGAT
342	CCTGGAAGACGC	GGTGAT	366	CCAACATTATC	GGTGAT
343	TCTAAGACTTC	GGTGAT	367	TCAAGAAGTTC	GGTGAT
344	CGAACATATTC	GGTGAT	368	CCGAACACTTC	GGTGAT
345	CGAGGCAATGAC	GGTGAT	369	TACATCCATC	GGTGAT
346	TTCGCCAACAC	GGTGAT	370	TCCGCCATGC	GGTGAT
347	TCGGCACGAATC	GGTGAT	371	TGCCTGGATC	GGTGAT
348	TCCGTTCCGGTC	GGTGAT	372	TGGAGATTGGTC	GGTGAT
349	CCTTAGGATGGC	GGTGAT	373	CTAAGATCCGC	GGTGAT
350	CACCACCAATTC	GGTGAT	374	CTAGCCAATGAC	GGTGAT
351	TTGAAGCCAGGC	GGTGAT	375	CAAGAATAATTC	GGTGAT
352	CCTCCAATCGGC	GGTGAT	376	CTTGAGAATTAC	GGTGAT
353	TTACAATGAATC	GGTGAT	377	CACCATCCGGTC	GGTGAT
354	TCCTGCATGATC	GGTGAT	378	CTTGAAGACGAC	GGTGAT
355	CGCTTCCAAC	GGTGAT	379	TTCTACAATATC	GGTGAT
356	TGACAACCTTC	GGTGAT	380	CGGAACCTTGC	GGTGAT
357	CTTGCCCAACTC	GGTGAT	381	AACAATTCTGAAC	GGTGAT
358	TCTTGGCAATGC	GGTGAT	382	TTGCACCGTTTC	GGTGAT
359	AAGGCATCCAAC	GGTGAT	383	TTGGACTTATTC	GGTGAT
360	CCGACCGGATTC	GGTGAT	384	TCGAGATTAATC	GGTGAT

Troubleshooting Guide

Examples of Libraries Prepared with CleanPlex Hereditary Cancer Panel v2

The library peak should be between about 250 bp and 500 bp. Below is a representative Agilent Bioanalyzer traces generated for CleanPlex Hereditary Cancer Panel v2 using 10 ng of gDNA as input.

CleanPlex Hereditary Cancer Panel v2



Potential Causes for Extra Peaks and Suggested Solutions

Peaks around 70–90 bp are index primer dimers from the Second PCR Reaction and result from incomplete removal of low molecular weight DNA fragments during the final magnetic bead purification (Post-Second PCR Purification). When these peaks are high, it usually indicates one or more of the following:

- Inaccurate pipetting of magnetic beads when making a large number of libraries in a short period of time.
- Insufficient removal of supernatant and/or ethanol washes during the last purification.
- Adding more than specified amount of indexed primers to Second PCR Reaction.

Peaks around 150–190 bp are residues of digested non-specific amplification products and adapter dimers. They come from incomplete removal of low molecular weight DNA fragments during the Post-Digestion Purification or nonspecific products formed during or after the Multiplex PCR (mPCR) Reaction due to deviation from protocol or high concentration of panel. The digestion reagent degrades non-specific amplification products into small pieces, which are then removed during magnetic bead purification. These peaks are usually caused by one or more of the following:

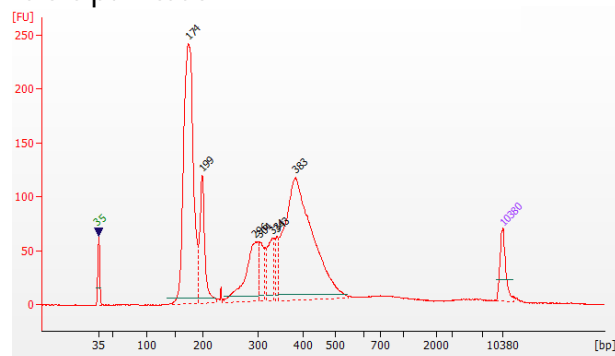
- Inaccurate pipetting of magnetic bead volume.
- Insufficient mixing of reaction solutions or bead and sample mixture.
- Insufficient removal of supernatant and ethanol washes during purification.
- Allowing mPCR products to sit for too long (and form nonspecific products) before purification.
- CleanPlex Custom NGS Panels may require panel titration for optimal performance. Often dimers will decrease by reducing the panel concentration in the mPCR Reaction Mixture.
- Incorrect annealing time, specifically unnecessarily longer annealing time.

Broad peaks spread across 500 – 10,000 bp range are nonspecific products due to overamplification. Double check that the correct mPCR and Second PCR cycle numbers were used. PCR cycles are determined based on the amplicon count per pool of your panel, DNA input amount, and DNA quality. Try reducing the Second PCR cycles by 2-3 cycles if issue persists. If you're working with a custom panel for organisms with a much smaller genome than human's, consider reducing the DNA input and Second PCR cycles accordingly.

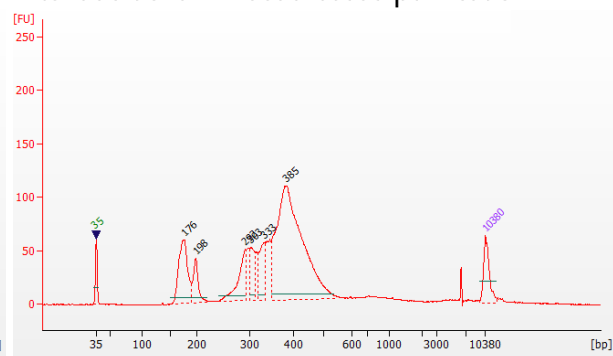
Removing nonspecific products from final libraries

If short nonspecific products described above are present in significant amounts, they can be reduced by pooling indexed libraries (that will be sequenced in the same lane) and performing one additional round of 1X magnetic bead-based purification if the pooled library **concentrations is >3,000 pM** and the **total volume is >5 µL**. Low volume and low concentration libraries should not be bead purified again as it will lead to significant loss of the library of interest. In the figures below, the Agilent Bioanalyzer trace on the left shows a CleanPlex Hereditary Cancer NGS library that contains significant adapter dimers due to poor library preparation. The Bioanalyzer trace on the right shows the same library after an additional 1X magnetic bead-based purification. The bead purification can be repeated once more if volume and concentration still meet the criteria above. We recommend keeping short adapter dimer peaks to less than 5% for best results. When possible it's always better to repeat the library preparation with the corrected steps so nonspecific products do not form in the first place.

Before purification



After additional 1X bead-based purification



Potential Reasons for No Peaks

- 30% ethanol instead of 70% ethanol was used in DNA purification with magnetic beads.
- Magnetic beads were not added for one or more of the purification steps.
- Stop Buffer was not added or was added too late after Digestion Reaction, resulting in over-digestion of the samples. This may happen when handling a large number of samples.
- DNA quantification was inaccurate, especially if using spectrophotometric methods, such as the NanoDrop instrument. Try using more input DNA.
- DNA quality is extremely degraded. Try using more input DNA.
- Incompatible indexed PCR primers were using in the Second PCR Reaction. Only use CleanPlex for MGI Indexed PCR Primers with CleanPlex for MGI NGS Panels.
- A weak or incompatible magnetic rack was used to perform magnetic bead purification, resulting in significant bead loss. Do **not** use magnetic racks designed for 1.5 ml tubes.

Additional Resources

Please visit www.paragongenomics.com/product/faq/ for additional troubleshooting resources.

Data Analysis Recommendations for Illumina

We recommend the Broad Institute's GATK Best Practice (<https://software.broadinstitute.org/gatk/best-practices/>) as general guiding principles for sequencing data analysis.

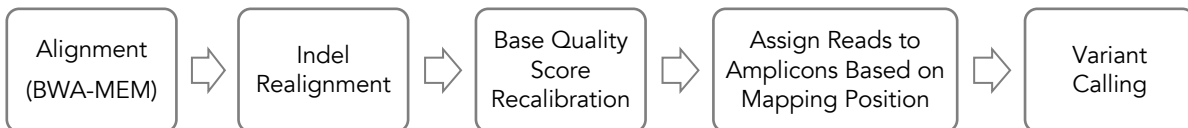
Please refer to the following recommended steps for analyzing CleanPlex NGS libraries sequenced on Illumina platforms.

1. **Adapter Trimming.** Trim Illumina adapter sequences using a sequence trimming software such as cutadapt (<https://cutadapt.readthedocs.io/en/stable/>). Following are the adapter sequences to be trimmed from 3' of the reads.

R1 reads: AGATCGGAAGAGCACACGTCTGAACTCCAGTCAC

R2 reads: AGATCGGAAGAGCGTCGTGTAGGGAAAGAGTGT

2. **Suggested Workflow.** Use the following workflow to process and analyze the sequencing data:



- Perform read mapping WITHOUT trimming primer sequences.
 - Omit de-duplication step.
 - Set sub-sampling number to be higher than maximum read depth.
3. **BED Files.** Visit www.paragongenomics.com/product_documents/ to download panel-specific amplicon BED files and amplicon insert BED files. For CleanPlex Custom Panels, contact techsupport@paragongenomics.com.
 4. **Read Assignment and Variant Calling.** For gene panels, for which amplicons are distributed in two or more separate pools, we recommend assigning reads to amplicons based on the mapping position, and then separating them according to amplicon pool assignment. Subsequent variant calling would be performed separately for reads from pool 1 and pool 2, and so on. The variant calling results would then be summarized for final report. Alternatively, primer sequences can be trimmed from reads before mapping and variant calling.
 5. **Performance Metrics.** The following metrics may be used to measure the performance of a CleanPlex NGS Panel:
 - **Mapping Rate:** Percentage of reads mapped to reference genome.
 1. **On-Target Rate:** Percentage of mapped reads aligned to the targeted regions.
 2. **Coverage Uniformity:** Percentage of amplicons with read depth equal to or greater than 20% of mean read depth of all amplicons in the panel.

Data Analysis Recommendations for Ion Torrent

We recommend customers to use analysis software provided by Ion Torrent. A few suggestions specific to Paragon Genomics panels are given below.

1. **Trim tag sequences.** As shown in the diagram of library structure below, a short tag sequence (TAG-1 and TAG-2 respectively) is attached to both ends of an amplicon. The tag sequences are added during primer synthesis and they serve as priming site in second PCR reaction where Ion Torrent adapters are added. It is the best to trim those sequences from sequencing read before read mapping.



It is recommended to trim the tag sequences with open source software cutadapt using the following options:

```
cutadapt -g CCTACACGACGCTCTTCCGATCT \
-g TTCAGACGTGTGCTCTTCCGATCT \
-a AGATCGGAAGAGCGTCGTGTAGG \
-a AGATCGGAAGAGCACACGTCTGAA \
-e 0.1 -O 9 -m 20 -n 2 \
-o out.fq.gz in.fq.gz \
> cutadapt_report.output.txt
```

The above command would trim left-over adapter sequences as well.

2. **Trim primer sequences.** For a single-pool panel, we don't recommend to trim primer sequences from sequencing reads. For a two-pool panel, however, trimming primer sequences with a software is recommended to avoid false positive calls from primer binding sites. Paragon Genomics provide primer sequences to facilitate that.

Technical Support

For technical assistance, please contact Paragon Genomics Technical Support.

Phone: 650-822-7545

Email: techsupport@paragongenomics.com

Website: www.paragongenomics.com

Paragon Genomics

3521 Investment Blvd, Ste 1

Hayward, CA 94545 USA

1-510-363-9918

contact@paragongenomics.com

www.paragongenomics.com

