



CleanPlex® for MGI SARS-CoV-2 Research and Surveillance Panel User Guide

This user guide is for the following products for sequencing on DNBSEQ™ platforms:

- CleanPlex® for MGI SARS-CoV-2 Research and Surveillance Panel

For other Ready to use Panels not list, see product document page for appropriate user guides

Get the latest user guide at: www.paragongenomics.com/product_documents/

This document and its contents are proprietary to Paragon Genomics, Inc., and are intended solely for the contractual use of its customer in connection with the use of the product(s) described herein and for no other purpose. This document and its contents shall not be used or distributed for any other purpose and/or otherwise communicated, disclosed, or reproduced in any way whatsoever without the prior written consent of Paragon Genomics. Paragon Genomics does not convey any license under its patent, trademark, copyright, or common-law rights nor similar rights of any third parties by this document.

The contents of this document are provided "AS IS." This document may be updated or changed without notice at any time. This information could contain technical inaccuracies, typographical errors and out-of-date information. Use of the information is therefore at your own risk. In no event shall PARAGON GENOMICS, INC. be liable for any special, indirect, incidental or consequential damages resulting from or related to the use of this document.

The instructions in this document must be strictly and explicitly followed by qualified and properly trained personnel in order to ensure the proper and safe use of the product(s) described herein. All of the contents of this document must be fully read and understood prior to using such product(s). FAILURE TO COMPLETELY READ AND EXPLICITLY FOLLOW ALL OF THE INSTRUCTIONS CONTAINED HEREIN MAY RESULT IN DAMAGE TO THE PRODUCT(S), INJURY TO PERSONS, INCLUDING TO USERS OR OTHERS, AND DAMAGE TO OTHER PROPERTY, AND WILL VOID ANY WARRANTY APPLICABLE TO THE PRODUCT(S).

PARAGON GENOMICS DOES NOT ASSUME ANY LIABILITY ARISING OUT OF THE IMPROPER USE OF THE PRODUCT(S) DESCRIBED HEREIN.

CleanPlex® for MGI SARS-CoV-2 Panels are intended for **Research Use Only**. It may not be used for any other purposes including, but not limited to, use in diagnostics, therapeutics, or in humans. CleanPlex® for MGI SARS-CoV-2 Panels may not be transferred to third parties, resold, modified for resale or used to manufacture commercial products without prior written approval of Paragon Genomics, Inc.

All trademarks are the property of Paragon Genomics, Inc. or their respective owners.

©2020 Paragon Genomics, Inc. All Rights Reserve

Revision History

Document	Date	Description of Change
UG4002-01	March 2020	<ul style="list-style-type: none">Initial version

Table of Content

Overview	5
Product Information	5
Applications	6
Compatible Sequencing Instruments	6
Kit Contents	7
Required Materials and Equipment Not Included	9
Storage, Handling, and Usage	11
Workflow	12
Protocol	13
General Best Practices	13
RNA Best Practices	14
Input RNA Requirements	15
Set up and Preparations	16
1A. Reverse Transcription (RT) Reaction	17
1B. Post-RT Purification	20
2A. Multiplex PCR (mPCR) Reaction	22
2B. Post-mPCR Purification	24
3A. Second PCR Reaction	27
3B. Post-Second PCR Purification	30
Circularization	32
Quality Control Prior to Sequencing	32
Recommended Sequencing Length and Depth	33
Supporting Information	34
CleanPlex for MGI Single-Indexed PCR Primers	34
Troubleshooting Guide	38
Data Analysis Recommendations for MGI Sequencing Data	41
Technical Support	43

Overview

Product Information

CleanPlex® SARS-CoV-2 Research and Surveillance Panels are a fast, robust, and versatile solution for target enrichment and library preparation for next-generation sequencing (NGS) on Illumina® or DNBSEQ™ sequencing platforms. CleanPlex SARS-CoV-2 Panels generate highly accurate data from minimal RNA input using a fast and simple workflow. CleanPlex SARS-CoV-2 Panels are expertly optimized with predesigned primers to generate valuable insights in the identification of viral infection, more specifically from coronaviruses, as well as active surveillance of acquired genetic variability through the acquisition of mutations.

CleanPlex SARS-CoV-2 Panels are powered by Paragon Genomics' proprietary CleanPlex Technology, which combines an advanced primer design algorithm and an innovative background cleaning chemistry to generate best-in-class target enrichment performance and efficient use of sequencing reads. The patented CleanPlex background cleaning chemistry effectively removes nonspecific PCR products to enable ultra-high multiplexing of amplicons. More than 20,000 amplicons can be multiplexed per primer pool to build large NGS panels that can interrogate megabase-size genomic regions to unlock new applications using a streamlined workflow.

CleanPlex SARS-CoV-2 product line offers two panel designs tailored specifically to your sequencing needs, with an Illumina version and an MGI version. These two designs vary in the adapter sequences used to make them compatible with either platform, enabling flexibility regarding your sequencing strategy.

CleanPlex for MGI SARS-CoV-2 Panel feature a fast and simple workflow that can be completed in 5 hours from purified RNA to indexed NGS libraries ready for sequencing. The workflow involves just 3 steps, each consisting of a thermal-cycling or incubation reaction followed by a library purification using magnetic beads. CleanPlex for MGI SARS-CoV-2 Panels have minimal tube-to-tube transfer, offering many benefits of a single-tube workflow such as preservation of nucleotide material and prevention of handling errors and sample mix-up.

The first step of the CleanPlex for MGI SARS-CoV-2 workflow is cDNA synthesis and purification from purified RNA sample. The second step is a multiplex PCR reaction that uses target-specific primers to amplify targets of interest, thus covering the entire SARS-CoV-2 genome with the 2-pool design. The third step is a PCR reaction that uses CleanPlex Indexed PCR Primers for DNBSEQ™ sequencing to amplify and add sample-level indexes to the generated libraries. CleanMag® Magnetic Beads are recommended for library purification. After the third step, a circularization step is carried out using the MGIEasy Circularization Kit to generate circularized DNA libraries, which are specific to and required for sequencing on MGI's NGS instruments. See the Workflow section for a detailed depiction of the CleanPlex for MGI workflow. Please see the workflow section for a detailed depiction of the CleanPlex workflow.



CleanPlex Target Enrichment and Library Preparation Workflow for DNBSEQ

5 hours of total assay time, 60 minutes of hands-on time

Applications

The CleanPlex for MGI SARS-CoV-2 Research and Surveillance Panels can be used to effectively amplify and detect SARS-CoV-2 RNA in samples using our multiplex PCR technology, enabling reliable results from even low copy numbers. Our assay produces clean characteristic target peaks of defined sizes, which allows for direct detection of the presence of viral genome from the *Coronaviridae* family by electrophoresis. Sequencing is then used to provide confirmation of the species as well as phylogenetic information for specific strain discrimination. The primer design was specifically directed against SARS-CoV-2 but can amplify conserved regions of other coronaviruses in a sample, giving additional insight. These multiplex PCR based panels are mutation tolerant to allow pinpointing sequence variability due to evolution within the SARS-CoV-2 genome, therefore providing a powerful solution for more in-depth research and surveillance purposes.

The panel is a two-pool design to cover the entire SARS-CoV-2 genome, however for applications that do not require such in-depth study of the entire genome, just one of the two pools can be used for faster identification and to save on sequencing space. The single-pool application allows a straight forward one mPCR workflow, allowing for faster turn around and reduced magnetic bead use.

Simplified Workflow

- Single primer pool protocol (1 mPCR per sample)
- Confirm by sequencing (half of the genome)
- Identification and potential strain analysis only

Complete Workflow

- 2 primer pool protocol (2 mPCR per sample)
- Confirm by complete viral genome sequencing
- Identification, strain/mutation analysis, and surveillance studies

Organisms	Sample Types	Applications
<ul style="list-style-type: none"> • Virus 	<ul style="list-style-type: none"> • Purified RNA from bronchoalveolar lavage, tracheal aspirate, sputum, NP/OP swab, nasopharyngeal wash/aspirate or nasal aspirate 	<ul style="list-style-type: none"> • Identify viral RNA from the <i>Coronaviridae</i> family • Confirm specific SARS-CoV-2 strain(s) present in samples through sequencing • Phylogenetic / Surveillance studies through in-depth sequence data analysis

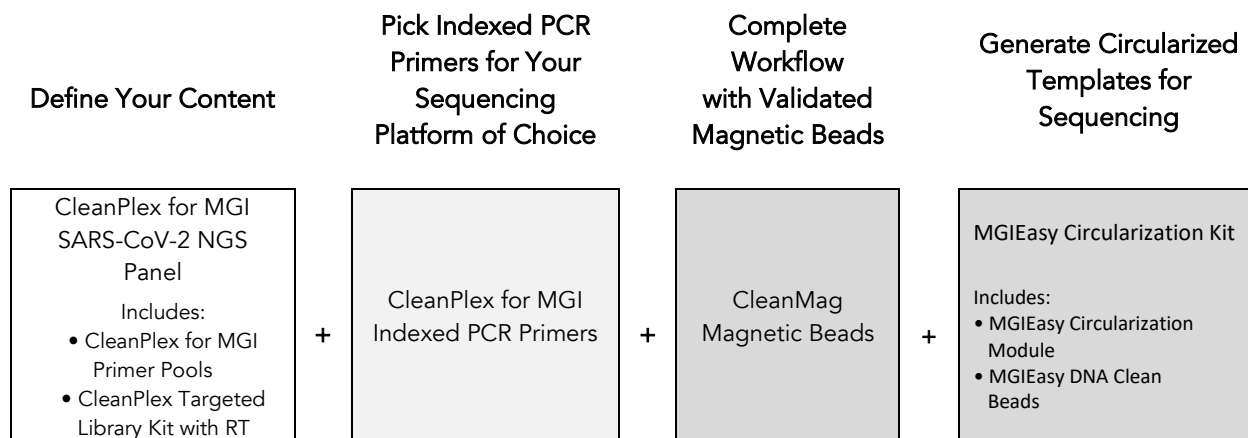
Compatible Sequencing Instruments

CleanPlex for MGI NGS Panels and CleanPlex for MGI Indexed PCR Primers are used to generate target-enriched and indexed NGS libraries that are compatible with all paired end DNBSEQ sequencing platforms, including DNBSEQ-T7, DNBSEQ-G50, and DNBSEQ-G400 FAST systems.

Kit Contents

The protocol outlined in the CleanPlex for MGI SARS-CoV-2 Panel User Guide requires the following components, which need to be ordered separately:

- CleanPlex for MGI SARS-CoV-2 Panel
- CleanPlex for MGI Indexed PCR Primers
- CleanMag Magnetic Beads (or equivalent)
- MGIEasy Circularization Kit (MGI, 1000005259)



Panel Specifications

Panel	Number of Primer Pools	Primer Pool Concentration	Number of Amplicons	Average Amplicon Length	Average Library Length
CleanPlex for MGI SARS-CoV-2 Panel	2	10X	343	149 bp	235 bp

CleanPlex NGS Panel — Kit Contents, Store at -20°C

Panel	SKU	Size (Reactions)	Components		
			Primer Pool 1	Primer Pool 2	CleanPlex Targeted Library Kit
CleanPlex for MGI SARS-CoV-2 Panel	918001	8	8 µl	8 µl	2-pool, 8 rxns
	918002	96	96 µl	96 µl	2-pool, 96 rxns
	918003	384	384 µl	384 µl	2- pool, 384 rxns

A CleanPlex Targeted Library Kit with RT is included in every CleanPlex for MGI SARS-CoV-2 Kit. Please note that the CleanPlex Targeted Library Kit with RT is **not** sold separately.

CleanPlex Targeted Library Kit with RT — Kit Contents, Store at –20°C (not sold separately)					
Configuration			2-Pool		
Size			8 Rxns	96 Rxns	384 Rxns
Component	Cap Color	SKU	918001	918002	918003
RT Primer Mix DP	Purple striped		24 µl	288 µl	1152 µl
RT Enzyme	Blue Striped		8 µl	96 µl	384 µl
RT Buffer DP	Green Striped		40 µl	480 µl	1920 µl
5X mPCR Mix	Green		32 µl	384 µl	1536 µl
Stop Buffer	Red		48 µl	576 µl	2304 µl
5X 2nd PCR Mix	Blue		64 µl	768 µl	3072 µl
TE Buffer	Clear		500 µl	4 ml	16 ml
Water (DNase and RNase-free)	-		500 µl	4 ml	16 ml

Required Materials and Equipment Not Included

- CleanPlex Indexed PCR Primers (please visit www.paragongenomics.com/store for more indexing options)

CleanPlex for MGI Single-Indexed PCR Primers— Store at –20°C			
	SKU	Size (Reactions)	Format
CleanPlex for MGI Single-Indexed PCR Primers, Set A	318001	32	16 indexes (16 tubes)
	318007	96	
CleanPlex for MGI Single-Indexed PCR Primers, Set B	318002	32	16 indexes (16 tubes)
	318008	96	
CleanPlex for MGI Single-Indexed PCR Primers, Set C	318003	32	16 indexes (16 tubes)
	318009	96	
CleanPlex for MGI Single-Indexed PCR Primers, Set D	318004	32	16 indexes (16 tubes)
	318010	96	
CleanPlex for MGI Single-Indexed PCR Primers, Set E	318005	32	16 indexes (16 tubes)
	318011	96	
CleanPlex for MGI Single-Indexed PCR Primers, Set F	318006	32	16 indexes (16 tubes)
	318012	96	

- CleanMag Magnetic Beads, or equivalent — eg. Agencourt™ AMPure™ XP Kit (Beckman Coulter, A63880, A63881, or A63882)

CleanMag Magnetic Beads — Store at 2–8°C			
	SKU	Size (Volume)	Reactions 2-Pool panels
CleanMag Magnetic Beads, 1 ml	718001	1 ml	~5
CleanMag Magnetic Beads, 5 ml	718002	5 ml	~25
CleanMag Magnetic Beads, 60 ml	718003	60 ml	~300
CleanMag Magnetic Beads, 450 ml	718004	450 ml	~2,250

- MGIEasy Circularization Kit (MGI, Cat. No.1000005259, 16 reactions)

CleanPlex for MGI SARS-CoV-2 Research and Surveillance NGS Panel User Guide

- For PCR tubes or strips, CleanMag Magnetic Rack, for 0.2 ml 8/12-tube PCR Strip (SKU 719001) or equivalent magnetic racks designed for PCR strip workflows
- For 96-well PCR plates, CleanMag Magnetic Plate, for 96-well PCR plates (SKU 719002) or equivalent magnetic plates designed for PCR plate workflows

CleanMag Magnetic Rack & Plate		
	SKU	Compatibility
CleanMag Magnetic Rack	719001	2 rows of 12 tubes each for PCR strip tubes
CleanMag Magnetic Plate	719002	96-well PCR plates, full or semi-skirted compatible

- 70% ethanol (freshly prepared)
- Nuclease-free, low bind, thin-wall PCR strip tubes with attached caps, or 96-well PCR plate with adhesive film
- Pipettors and low-retention filtered pipette tips
- Thermal cycler
- Mini-centrifuge, or 96-well plate centrifuge
- Qubit® Fluorometer, RNA HS (High Sensitivity) and dsDNA HS Assay Kits, or equivalent
- Agilent® 2100 Bioanalyzer® Instrument and Agilent® High Sensitivity DNA Kit, or equivalent

Storage, Handling, and Usage

CleanPlex for MGI SARS-CoV-2 Panels and CleanPlex for MGI Indexed PCR Primers are shipped on blue ice (ice packs). Upon receipt, immediately store both at -20°C in a constant-temperature freezer. Do not store in a freezer with auto-defrost or frost-free features. Do not store at -80°C.

CleanMag Magnetic Beads solution is shipped at room temperature or on blue ice (ice packs). CleanMag Magnetic beads may be frozen during transit. This single freeze thaw will not affect the performance of the beads. Upon receipt, immediately store CleanMag Magnetic Beads at 2°C to 8°C in a constant-temperature refrigerator. Do not freeze. Do not store at -20°C.

Always ensure that all frozen components are fully thawed and have been vortexed and spun down to bring all liquids to the bottom of the tubes prior to use.

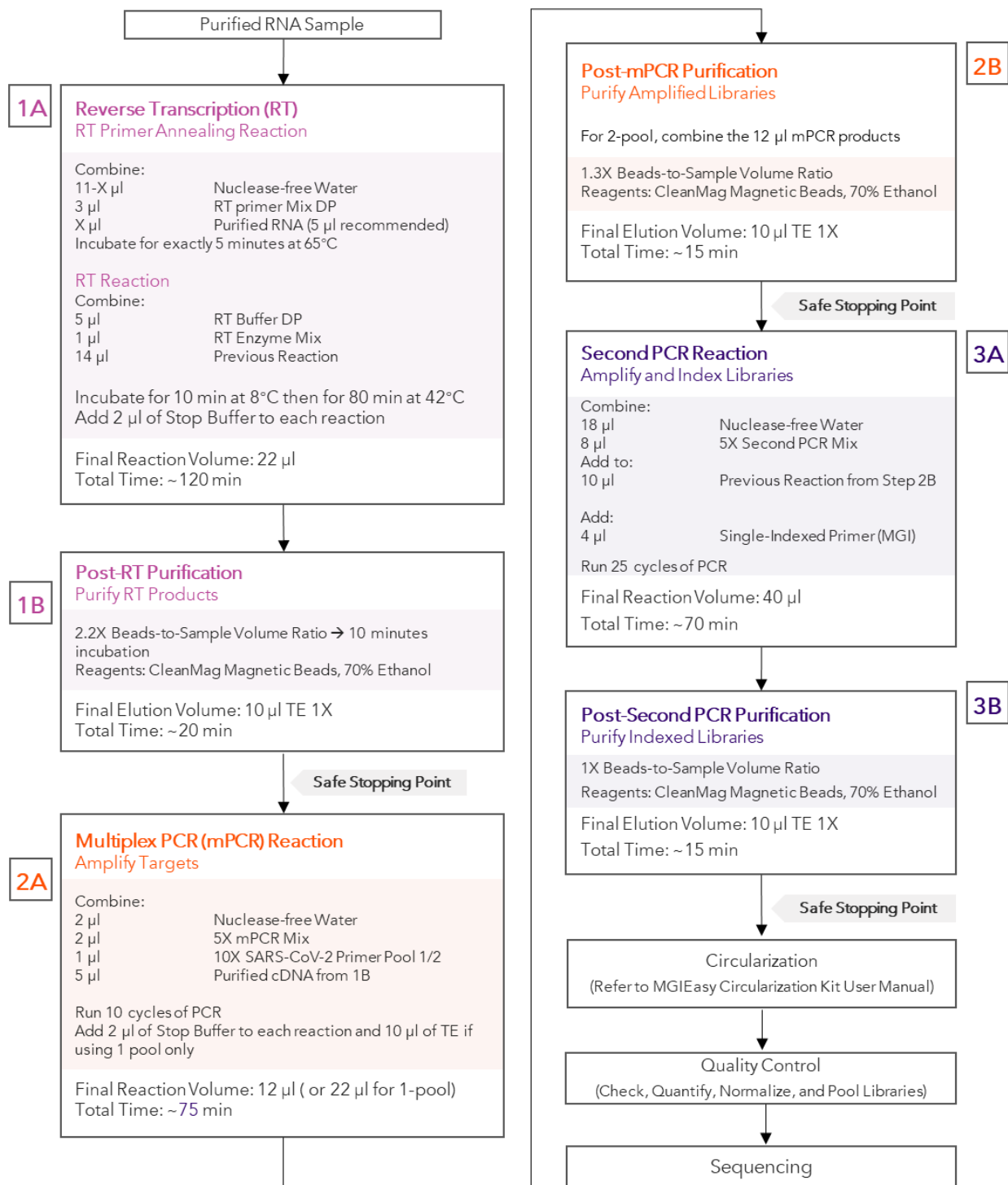
The components containing enzymes are viscous (10X SARS-CoV-2 pools, RT Enzyme Mix, 5X mPCR Mix, 5X 2nd PCR Mix) and specially formulated for storage at -20°C without freezing to avoid freeze-thaw cycles to retain their full activity. Please avoid storing these components below -23°C.

CleanPlex for MGI SARS-CoV-2 Panels are developed, designed and sold exclusively for research use only. None of the products or their individual components have been tested for use in diagnostic procedures.

For hazard information, please refer to the Safety Data Sheet (SDS), which is available upon request.

Workflow

The following diagram illustrates CleanPlex NGS Panel's targeted NGS library preparation workflow.



Protocol

General Best Practices

- When using the kit for the first time, briefly vortex and spin the tubes in the kit to bring the liquid to the bottom of the tubes. Store the tubes containing enzymes (10X SARS-CoV-2 Pools, RT Enzyme Mix, 5X mPCR Mix, 2nd PCR Mix) on ice during their respective procedures. All other components, including primer pools, may be thawed at room temperature, mixed thoroughly by vortexing and spun-down before use.
- Use good laboratory practices to minimize cross-contamination. If possible, perform PCR setup in an isolated area or room to minimize cross-contamination between samples, multiplex PCR (mPCR) primers, or indexed PCR primers. Always change pipette tips between samples and change gloves frequently. Clean all workstations and tools with 10% bleach followed by water, then alcohol at the end of each work day.
- Use a calibrated PCR thermal cycler as specified by the manufacturer's user guide. Validated thermal cyclers include Bio-Rad C1000, Eppendorf Mastercycler series, and Applied Biosystems GeneAmp PCR System 9700. Generally, a thermal cycler set with the highest ramp speed, such as 5°C/second and higher, is not recommended. For thermal cyclers with adjustable ramp speed, we recommend 3°C/second up and 2°C/second down speed, or use the default setting (no ramp adjustment).
- To ensure accurate assembly of reactions, withdraw viscous solutions (such as 10X SARS-CoV-2 Pools, RT Enzyme Mix, 5X mPCR Mix, 2nd PCR Mix) slowly from containers and dispense it slowly into the reaction mixtures. A good practice is to remove excess from outside of tip and rinse the tip by pipetting up and down several times after dispensing viscous solutions into aqueous mixture. Thoroughly mix each assembly to ensure solutions are homogenous prior to PCR and incubations. Remember to briefly spin the PCR tubes or 96-well PCR plate after mixing.
- Always keep working solutions and PCR products on ice until needed. Combine PCR mixes just immediately prior to use and do not prolong storage of combined PCR mixes and PCR products.
- The protocol is designed to minimize the number of tube-to-tube transfer in order to avoid or reduce sample loss. Except for pooling of mPCR products, the entire protocol is performed following a single-tube workflow, with no tube-to-tube transfers.
- When working with 96-well PCR plates, take extra care to ensure thorough mixing of all samples and proper sealing to avoid cross-contamination between samples.
- Magnetic bead purification steps should be performed carefully to minimize residual supernatant and ethanol washes, and to minimize bead loss. Using a strong magnetic rack or plate specifically designed for manual handling of PCR tubes or 96-well PCR plates is critical for a successful bead purification.
- Always pre-warm thermal cyclers, pre-warm a water bath or heat block to 65°C or 37°C as described in the protocol.

- Assign sample indexes to specific samples before starting the protocol.
- Always prepare a master mix of reagents when working with multiplex reactions. Prepare ~5-10% excess of each master mix to allow for pipetting losses. A master mix calculation sheet can be downloaded from the Product Documents page on the Paragon Genomics website at www.paragongenomics.com/product_documents/

RNA Best Practices

- RNA is a single-stranded polynucleotide that is incredibly susceptible to degradation by base- or enzyme-catalyzed hydrolysis. This means that working with RNA can be more demanding than its double-stranded counterpart, DNA, due to the chemical instability of RNA and because of the pervasive presence of RNases. Furthermore, unlike DNases, RNases have no requirement for metal ion co-factors, and can remain active even after prolonged boiling or autoclaving.
- When working with RNA, wear gloves at all times. After putting on gloves, avoid touching contaminated surfaces and equipment with the gloved hands. Even if all the reagents have been decontaminated, RNases can be reintroduced by contact with ungloved hands or with unfiltered air.
- Use sterile, disposable plasticware whenever possible. These require no treatment and are considered to be RNase-free.

Note: *Autoclaving without DEPC/DMPC treatment is insufficient for inactivating RNases.*

- If possible, designate a special area for RNA work only. Treat surfaces of benches, glassware, and pipettes with commercially available RNase-inactivating agents such as RNase Zap™.
- In addition, wipe benches with a three-wash method, using 10% bleach, followed by water, and finish with 70-100% ethanol **each time** prior to use, in order to rid the area of microorganisms.
- Whenever possible, purchase reagents that are free of RNases. Be sure to separate reagents used for RNA work from "general use reagents" in the laboratory, and use only for RNA processing.
- Prior to processing, store RNA at -70 to -80°C, as aliquots in ethanol, isopropanol or lysis buffer as indicated by extraction methods. Most RNA is relatively stable at this temperature. Centrifuge the RNA and resuspend in an appropriate RNase-free buffer before use. Use autoclaved DEPC water to elute and resuspend RNA or alternatively use molecular grade water certified as RNase- and DNase-free.
- Although DNA is relatively stable at elevated temperatures (+100°C), most RNA is not. Therefore, avoid high temperatures (above +65°C) since these can affect the integrity of RNA. This means it is critical to handle solutions of RNA on ice when using, including for thawing and processing RNA samples and related reactions.

Input RNA Requirements

Refer to the following chart for the amounts of input RNA.

Panel	RNA Input Range (per pool)	Recommended RNA Input (per pool)
CleanPlex for MGI SARS-CoV-2 Panel	50–100 ng	50 ng

- The maximum volume of RNA input per RT Reaction is 11 μ l. An input of 5 μ l of extracted and purified RNA (10-15ng/ μ l concentration) is recommended per pool. For each primer pool, an individual Multiplex PCR reaction is required.
- If sample quality is questionable, more RNA can be used for best results.
- Recommended RNA extractions kits include: QIAamp® Viral RNA Mini Kit, QIAamp® MinElute Virus Spin Kit or RNeasy® Mini Kit (QIAGEN), EZ1 DSP Virus Kit (QIAGEN), Roche MagNA Pure Compact RNA Isolation Kit, Roche MagNA Pure Compact Nucleic Acid Isolation Kit, Roche MagNA Pure 96 DNA and Viral NA Small Volume Kit.
- After RNA extraction, avoid diluting RNA samples to < 10 ng/ μ l when possible for prolonged storage, since RNA is less stable in solution at lower concentrations.
- Avoid freeze-thawing dilute RNA samples when possible, and measure sample concentrations immediately prior to use to avoid inaccurate sample input.
- 50 ng or higher of RNA is recommended for each multiplex PCR Reaction.
- RNA Input is based off of tested conditions using Universal Human Reference RNA; actual optimal input may vary based on actual RNA sample quality and viral load.
- Compatible RNA buffering systems are Tris HCl or TE.

Set up and Preparations

- When working with multiple samples, prepare a master mix of RT Primer Annealing Reaction Mixture for RT. Mix well, aliquot into individual tubes, then add the recommended RNA input to each reaction.
- Bring magnetic bead solution to room temperature for at least 30 minutes before use. Replace in 2-8 °C storage at the end of the day.
- Freshly prepare 70% ethanol by combining 100% ethanol and nuclease-free water at volume ratios of 7 to 3 respectively. Do not top off one liquid with the other in a volumetric container because the volumetric ratio will not be accurate. When water and ethanol are mixed, the final volume will be less than the sum of individual volumes. Lower concentration of ethanol will affect final library yield.
- For all samples to be sequenced together, assign a specific index (CleanPlex for MGI Single-Indexed primers) to each sample.
- Note: Use the 1-Pool method for quick detection, reduced hands on time, and reduced total sequencing reads. However, for complete genome sequencing use the 2-Pool method for in-depth analysis.
- Note: There are safe stopping points after Post-RT Purification, Post-mPCR Purification, and Post-2nd PCR Purification. Plan accordingly.

1A. Reverse Transcription (RT) Reaction

- 1A.1. Thaw RT-Primer Mix and RT Buffer, vortex vigorously to mix, quick spin to collect liquid, then store on ice. Keep RT enzyme on ice when not in use. Using thin-wall PCR strip tubes (or a 96-well PCR plate), prepare the Reverse Transcription Annealing Reaction Mixture by adding components in the following order on ice or a cold block.

Note: When working with multiple samples, prepare a master mix of RT Primer annealing reaction Mixture. Mix well, aliquot into individual tubes, then add RNA samples to each reaction.

Note: Pre-warm a thermal cycler or heating unit to 65°C before beginning the RT Primer Annealing Reaction.



Important! Use RNA Best Practices by performing all reactions on ice or a cold block, and diligently avoid contamination and introduction of RNases until RT Reaction (1A) and RT Purification (1B) are complete.

RT Primer Annealing Reaction Mixture		
Reagent	Cap Color	Volume per reaction
DEPC Treated Nuclease-Free Water	Clear	11 – X µl
RT Primer Mix DP	Purple Striped	3 µl
Purified RNA	—	X µl
Total Volume per reaction		14 µl

- 1A.2. Close the caps of the PCR tubes or seal the PCR plate with adhesive film, spin briefly to bring down the liquid, mix thoroughly by pipetting up and down or by vortexing vigorously for at least 5 seconds until homogenous. While ensuring thorough mixing, avoid unnecessarily prolonged vortexing. Spin briefly for 3 seconds to collect the liquid.

Note: It is crucial that the reaction mixture is homogenous prior to thermal cycling. Incomplete mixing can cause decreased yield and increase nonspecific product formation.

Note: If using a PCR plate, use an applicator tool to firmly secure each reaction well and around the perimeter of the plate to prevent evaporation during thermal cycling.

- 1A.3. Preheat the thermocycler to 65 °C then load the tubes/plate in the thermal cycler and run the following thermal cycling protocol to anneal RT Primers.

RT Primer Annealing Reaction Incubation Protocol

Step	Temperature	Time	Ramping*
Incubation	65 °C	5 min	-
Hold	4 °C	∞	-

* For thermal cyclers without adjustable ramp speed, use the default settings.



Important! Do not stop and store samples. Immediately after RT primer annealing, continue to the Reverse Transcription Reaction.

- 1A.4. Place the tubes/plate on ice or cold block immediately after incubation. Open the tubes or carefully remove the adhesive film from the PCR plate. Prepare the Reverse Transcription (RT) Reaction Mixture by adding components in the following order on ice or a cold block.

Note: When working with multiple samples, prepare a master mix of RT Reaction Mixture. Mix well and aliquot into individual tubes.

RT Reaction Mixture

Reagent	Cap Color	Volume per reaction
RT Buffer DP	Green Striped	5 µl
RT Enzyme	Blue Striped	1 µl
Reaction from Step 1A.3	—	14 µl
Total Volume per reaction		20 µl

- 1A.5. Close the caps of the PCR tubes or seal the PCR plate with adhesive film, spin briefly to bring down the liquid, mix thoroughly by pipetting up and down at least 5 times or by vortexing vigorously for at least 5 seconds until homogenous. While ensuring thorough mixing, avoid unnecessarily prolonged vortexing. Spin briefly for 3 seconds to collect the liquid.

Note: It is crucial that the reaction mixture is homogenous prior to thermal cycling. Incomplete mixing can cause decreased yield and increase nonspecific product formation.

Note: Avoid over vortexing, RNA is single-stranded and susceptible to manual shearing and excessive fragmentation.

1A.6. Prechill the thermocycler to 8 °C, then load the tubes/plate in the thermal cycler and run the following thermal cycling protocol.

Step	Temperature	Time	Ramping*
Equilibration	8 °C	10 min	-
Incubation	42 °C	80 min	-
Hold	4 °C	∞	


* For thermal cyclers without adjustable ramp speed, use the default settings

1A.7. When thermocycling is complete, immediately add 2 µl of Stop Buffer (red cap) into each tube/well and mix by spinning briefly then vortexing. Spin again briefly to collect the liquid. The volume of each sample is now approximately 22 µl.




Important! Do not stop and store samples after reverse transcription. Add stop buffer then proceed to Step 1B, Post-RT Purification immediately.

1B. Post-RT Purification




Important! Ensure the Magnetic Bead Solution has come to room temperature before use.



Important! Use freshly prepared 70% ethanol. Lower concentration ethanol may result in lower yields.

- 1B.1. Vortex the magnetic beads suspension vigorously until homogenous. Perform a **2.2 X** bead-based purification by adding 48 μ l of magnetic beads to each sample as described in the table below. Mix by pipetting up and down at least 5 times or vortex vigorously for at least 5 seconds until homogenous.

Post RT Purification — 2.2 X Beads-to-Sample Volume Ratio	
	Volume per reaction
Reverse Transcription Product	22 μ l
Magnetic Beads to add	48 μ l



Important! Magnetic bead volume is critical to the purification process. Always dispense slowly and carefully. Keep the outside of the pipette free from droplets, **AND** make sure the entire volume is added to the sample (residual from inside pipette tips) before discarding the tip.

Ensure the bead + sample solution is thoroughly mixed before incubation, especially when working in a 96-well PCR plate format. Inadequate mixing can result in lowered yields and/or increased background in the final library.

- 1B.2. Incubate the mixture for **10 minutes** at room temperature.
- 1B.3. Briefly spin the tubes/plate. Place the tubes/plate on a magnetic rack and incubate for at least **2 minutes until the liquid is clear**. The beads will be drawn onto one side of each tube/well. While keeping the tubes/plate on the magnetic rack, carefully remove and discard the supernatant without disturbing the beads.

Note: *If the magnetic beads are aspirated into the pipette tip at any point during the purification process, dispense the solution back into tube, remove the tip, allow the beads to migrate toward the magnet again, then repeat.*

- 1B.4. Cap/seal the tubes/plate, and briefly spin again to bring down the remaining liquid. Place the tubes/plate on the magnetic rack to gather the beads. Using a 10 μ l pipette tip, carefully remove all residual supernatant from the bottom of the tube/well without disturbing the beads.



Important! Removing all residual supernatant from the RT Reaction *prior* to ethanol washing is critical to obtaining a clean, high-quality library. The above “spin and remove” step ensures complete removal of supernatant.

Note: A strong compatible magnetic rack is essential. If your magnetic rack or plate cannot collect the magnetic beads effectively, please look into a replacement.

- 1B.5. Add 180 μ l of freshly prepared 70% ethanol to each tube/well. Reposition the tubes/plate on the magnetic rack by placing the clear side of the tubes/wells (the side without beads) against the magnet. Allow the beads to completely migrate through the ethanol to the other side. **Do not vortex.** Carefully remove and discard the supernatant without disturbing the beads.
- 1B.6. Repeat step 1B.5.
- 1B.7. After the second wash, briefly spin the tubes/plate to bring down all remaining liquid. Place the tubes/plate on the magnet rack to gather the beads. Carefully remove the residual ethanol in each tube/well. Keeping the tubes/plate on the magnetic rack, air-dry the beads at room temperature for 5 minutes. **Do not over- or under-dry.**

Note: Over-dried beads can dislodge from the side of the tube and lead to cross-contamination. They are also more difficult to resuspend during elution. Residual ethanol inhibits PCR and will result in reduced yield. Especially when working with 96-well PCR plates, make sure all residual ethanol is dried (may take longer than 5 minutes) before going to the next step.

- 1B.8. Add 10 μ l TE buffer directly onto the pellet for each tube/well. Briefly spin and vortex to resuspend the dried beads completely. The cDNA will be immediately released from the beads as long as all beads are in solution. Spin briefly to collect the liquid to the bottom. There is no need to remove the beads.
- 1B.9. Proceed to Step 2A. Multiplex PCR Reaction.



Safe Stopping Point. Purified products may be stored at 10°C for up to 1 hour or at -20°C for up to 24 hours.

2A. Multiplex PCR (mPCR) Reaction



Important: Each primer pool requires one mPCR and 5 μ l of the purified RT reaction product. When working with a 1-pool workflow, the remaining 5 μ l of the purified RT reaction can be stored at -20°C for future use or discarded. When working with the 2-pool workflow, split the 10 μ l of the purified RT reaction into two 5 μ l tubes (1 for each pool), beads included.

- 2A.1. Prepare the mPCR Reaction Mixture by adding components in the following order on ice or a cold block. Mix the RT reaction product from 1B. 8 well and add 5 μ l to each mPCR reaction.

Note: Use the 1-Pool method for quick detection and reduced turnaround time. However, if in-depth sequencing is desired use the 2-Pool method for a more complete coverage. See application section for additional information.

Note: When working with multiple reactions, prepare a master mix. Mix well, then add 5 μ l of master mix to each sample. 2-pool workflow requires 2 mPCR reactions per sample.

mPCR Reaction Master Mix

Reagent	Cap Color	Volume per reaction
Nuclease-Free Water	—	2 μ l
5X mPCR Mix	Green	2 μ l
10X SARS-CoV-2 for MGI Primer Pool 1 or 2	Varies	1 μ l
Total Volume per reaction		5 μl



Important! 5X mPCR Mix and 10X Primer Pool(s) are viscous. Pipette slowly, remove any excess reagent on the outside of the pipette tip, and rinse tip in solution when handling these reagents.

mPCR Reaction Mixture

Reagent	Volume per reaction
Purified RT sample	5 μ l
mPCR Master mix for Pool 1 or Pool 2	5 μ l
Total Volume per reaction	10 μl

- 2A.2. Close the caps of the PCR tubes or seal the PCR plate with adhesive film, spin briefly to bring down the liquid, mix thoroughly by vortexing for at least 5 seconds until homogenous. Avoid prolonged vortexing. Spin briefly for 3 seconds to collect the liquid.

Note: It is crucial that the reaction mixture is homogenous prior to thermal cycling. Incomplete mixing can cause decreased yield and increase nonspecific product formation.

Note: If using a PCR plate, use an applicator tool to firmly secure each reaction well and around the perimeter of the plate to prevent evaporation during thermal cycling.

2A.3. Load the tubes/plate in the thermal cycler and run the following thermal cycling protocol.

mPCR Thermal Cycling Protocol				
Step	Temperature	Time	Ramping*	Cycles
Initial Denaturation	95 °C	10 min	-	-
Denaturation	98 °C	15 sec	3 °C/s	10
Annealing/Extension	60 °C	5 min	2 °C/s	
Hold	10 °C	∞		

* For thermal cyclers without adjustable ramp speed, use the default settings.

2A.4. Immediately add 2 µl of Stop Buffer (red cap) into each tube/well and mix by spinning briefly then vortexing.


Note: Do not allow samples to hold at 10 °C for longer than 30 minutes before adding Stop Buffer.

2A.5. Proceed to Step 2B. Post-mPCR Purification.




Important! Do not stop and store samples after the mPCR Reaction. Add Stop buffer then proceed to Step 2B, Post-mPCR Purification immediately.

2B. Post-mPCR Purification




Important! Ensure the Magnetic Bead Solution has come to room temperature before use.



Important! Use freshly prepared 70% ethanol. Lower concentration ethanol may result in lower yields.

- 2B.1. Open the tubes or carefully remove the adhesive film from the PCR plate.
- When using 1-pool workflow, add 10 µl of TE Buffer to each sample for a total of 22 µl volume.
 - When using 2-pool workflow, combine the 12 µl multiplex PCR products for each sample for a total of 24 µl volume.
- 2B.2. Quick spin the tubes/plate to collect the liquid. Open the tubes or carefully remove the adhesive film from the PCR plate.
- 2B.2. Vortex the magnetic beads suspension vigorously until homogenous. Perform a **1.3X** bead-based purification by adding magnetic beads to each sample as described in the table below. Mix by pipetting up and down at least 5 times or vortex vigorously for at least 5 seconds until homogenous.

Post-mPCR Purification — 1.3X Beads-to-Sample Volume Ratio		
Reagent	1-Pool workflow	2-Pool workflow
Total Sample Volume	22 µl (12 µl of sample + 10 µl of TE)	24 µl
Magnetic Beads to add	29 µl	31 µl



Important! Magnetic bead volume is critical to the purification process. Always dispense slowly and carefully. Keep the outside of the pipette free from droplets, **AND** make sure the entire volume is added to the sample (residual from inside pipette tips) before discarding the tip.

Ensure the bead + sample solution is thoroughly mixed before incubation, especially when working in a 96-well PCR plate format. Inadequate mixing can result in lowered yields and/or increased background in the final library.

- 2B.3. Incubate the mixture for **5 minutes** at room temperature.

- 2B.4. Briefly spin the tubes/plate. Place the tubes/plate on a magnetic rack and incubate for at least **2 minutes until the liquid is clear**. The beads will be drawn onto one side of each tube/well. While keeping the tubes/plate on the magnetic rack, carefully remove and discard the supernatant without disturbing the beads.

Note: *If the magnetic beads are aspirated into the pipette tip at any point during the purification process, dispense the solution back into tube, remove the tip, allow the beads to migrate toward the magnet again, then repeat.*

- 2B.5. Cap/seal the tubes/plate, and briefly spin again to bring down the remaining liquid. Place the tubes/plate on the magnetic rack to gather the beads. Using a 10 µl pipette tip, carefully remove all residual supernatant from the bottom of the tube/well without disturbing the beads.



Important! Removing all residual supernatant from the Multiplex PCR Reaction *prior* to ethanol washing is critical to obtaining a clean, high-quality library. The above “spin and remove” step ensures complete removal of supernatant.

Note: *A strong compatible magnetic rack is essential. If your magnetic rack or plate cannot collect the magnetic beads effectively, please look into a replacement.*

- 2B.6. Add 180 µl of freshly prepared 70% ethanol to each tube/well. Reposition the tubes/plate on the magnetic rack by placing the clear side of the tubes/wells (the side without beads) against the magnet. Allow the beads to completely migrate through the ethanol to the other side. **Do not vortex**. Carefully remove and discard the supernatant without disturbing the beads.

- 2B.7. Repeat step 2B.6

- 2B.8. After the second wash, briefly spin the tubes/plate to bring down all remaining liquid. Place the tubes/plate on the magnet rack to gather the beads. Carefully remove the residual ethanol in each tube/well. Keeping the tubes/plate on the magnetic rack, air-dry the beads at room temperature for 5 minutes. **Do not over or under dry**.

Note: *Over-dried beads can dislodge from the side of the tube and lead to cross-contamination. They are also more difficult to resuspend during elution. Residual ethanol inhibits PCR and will result in reduced yield. Especially when working with 96-well PCR plates, make sure all residual ethanol is dried (may take longer than 5 minutes) before going to the next step.*

2B.9. Add 10 μ l TE buffer directly onto the pellet for each tube/well. Briefly spin and vortex to resuspend the dried beads completely. The DNA will be immediately released from the beads as long as all beads are in solution. Spin briefly to collect the liquid to the bottom. There is no need to remove the beads.

2B.10. Proceed to Step 3A. second PCR reaction.



Safe Stopping Point. Purified products may be stored at 10°C for up to 1 hour or at –20°C for up to 24 hours.

3A. Second PCR Reaction

Note: Remember to assign a specific index to each sample before starting this step based on your sequencing needs.

- 3A.1 Thaw Indexed PCR Primers, vortex thoroughly, then spin briefly to collect the liquid. Prepare Second PCR Reaction Master Mix and add to each purified sample from Step 2B. Then add a unique Indexed PCR Primer to each sample.

Note: When working with multiple samples, prepare a master mix. Mix well, then add 26 μ l of master mix to each sample.

Second PCR Reaction Master Mix		
Reagent	Cap Color	Volume per reaction
Nuclease-Free Water	—	18 μ l
5X 2nd PCR Mix	Blue	8 μ l
Total Volume per reaction		26 μl

Second PCR Reaction Mixture	
Reagent	Volume per reaction
Second PCR Reaction Master Mix	26 μ l
Purified Sample from Step 2B	10 μ l
CleanPlex for MGI Indexed PCR Primer	4 μ l
Total Volume per reaction	40 μl



Important! When handling Indexed PCR Primers, take extra care to prevent cross-contamination by opening one tube at a time and changing pipette tips and gloves as necessary. Avoid touching the opening and inside of the tubes with your hands, pipette channel, or anything non-disposable.

- 3A.2 Close the caps of the PCR tubes or seal the PCR plate with adhesive film. Spin briefly to collect the liquid, then mix thoroughly by pipetting up and down at least 5 times or vortexing vigorously for at least 5 seconds until homogenous. Avoid unnecessarily prolonged vortexing. Spin briefly for 3 seconds to collect the liquid.

Note: It is crucial that the reaction mixture is homogenous prior to thermal cycling. Incomplete mixing can cause decreased yield and increase nonspecific product formation.

Note: If using a PCR plate, use an applicator tool to firmly secure each reaction well and around the perimeter of the plate to prevent evaporation during thermal cycling.

- 3A.3 Load the tubes/plate in the thermal cycler, and run the following thermal cycling protocol to amplify and index the libraries. Use the three tables below for thermal cycling protocol

Note: The Second PCR thermal cycling protocol depends on the starting RNA input amount and RNA quality. Generally, lower quality RNA, lower RNA input amount, or fewer amplicons in a panel require more PCR cycles.

Second PCR Reaction — Thermal Cycling Protocol				
Step	Temperature	Time	Ramping*	Cycles
Initial Denaturation	95 °C	10 min	-	1
Denaturation	98 °C	15 sec	3 °C/s	See table below
Annealing/Extension	60 °C	75 sec	2 °C/s	
Hold	10 °C	∞		

* For thermal cyclers without adjustable ramp speed, use the default settings.

CleanPlex for MGI SARS-CoV-2 NGS Panels — Second PCR Cycle Number	
Number of Amplicons	50 ng of RNA
171 or 172 (1-Pool workflow)	25
343 (2-Pool workflow)	24

Note: For optimal yield, CleanPlex Custom NGS panels may require adjustment to Second PCR cycle numbers based on the sample quality or sample type

Second PCR Reaction — Input Specific Cycle Number	
Input RNA for RT	Change in Cycle Number
10 ng	+ 2
25 ng	+ 1
50 ng	-
100 ng	- 1
200 ng	- 2
Low Quality or highly degraded RNA	+ 1 to + 2

3A.4 Proceed to Step 3B, Post- Second PCR Purification, immediately after cycle completion. Do not allow PCR product to hold at 10 °C for more than 30 minutes.



Important! Do not stop and store samples after the Second PCR Reaction. Proceed to Step 4B. Post-Second PCR Purification immediately.

3B. Post-Second PCR Purification

- 3B.1. Vortex the magnetic beads suspension vigorously until homogenous. Perform a **1X** bead-based purification by adding **40 µl** of magnetic beads to each sample. Mix by pipetting up and down at least 5 times or by vortexing vigorously for at least 5 seconds until homogenous.

Post-Second PCR Purification — 1X Beads-to-Sample Volume Ratio	
Reagent	Volume per reaction
Second PCR Reaction Product	40 µl
Magnetic Beads	40 µl



Important! Magnetic bead volume is critical to the purification process. Always dispense slowly and carefully. Keep the outside of the pipette free from droplets, **AND** make sure the entire volume is added to the sample (residual from inside pipette tips) before discarding the tip.

Ensure the bead + sample solution is thoroughly mixed before incubation, especially when working in a 96-well PCR plate format. Inadequate mixing can result in lowered yields and/or increased background in the final library.

- 3B.2. Incubate the mixture for 5 minutes at room temperature.
- 3B.3. Briefly spin the tubes/plate. Place the tubes/plate on a magnetic rack and incubate for at least **2 minutes until the liquid is clear**. The beads will be drawn onto one side of each tube/wall. While keeping the tubes/plate on the magnetic rack, carefully remove and discard the supernatant without disturbing the beads.
- 3B.4. Cap/seal the tubes/plate, and briefly spin again for to bring down the remaining liquid. Place the tubes/plate on the magnetic rack to gather the beads. Using a 10 µl pipette tip, carefully remove all residual supernatant from the bottom of the tube/well without disturbing the beads.



Important! Removing all residual supernatant from the Multiplex PCR Reaction *prior* to ethanol washing is critical to obtaining a clean, high-quality library. The above “spin and remove” step ensures complete removal of supernatant.

- 3B.5. Add 180 µl of freshly prepared 70% ethanol to each tube/well. Reposition the tubes/plate on the magnetic rack by placing the clear side of the tubes/wells (the side without beads) against the magnet. Allow the beads to completely migrate through the ethanol to the other side. **Do not vortex**. Carefully remove and discard the supernatant without disturbing the beads.
- 3B.6. Repeat step 3B.5.

- 3B.7. After the second wash, briefly spin the tubes/plate to bring down all remaining liquid. Place the tubes/plate on the magnetic rack to gather the beads. Carefully remove the residual ethanol left behind in each tubes/well. Keeping the tubes/plate on the magnetic rack, air-dry the beads at room temperature for 5 minutes. **Do not over or under dry.**

Note: *Over-drying and under-drying the beads can lead to reduced yield.*

- 3B.8. Add 10 μ l TE buffer directly onto the pellet for each tube/well. Briefly spin and vortex to resuspend the dried beads completely. The DNA will be immediately released from the beads as long as all beads are in solution. Spin briefly to collect the liquid to the bottom. There is no need to remove the beads. At this point the library is complete and can be stored with beads at -20°C .

Note: *To perform QC and sequencing, use a magnetic rack to separate the beads. Avoid transferring the beads when pipetting the clear supernatant for QC or sequencing.*



Safe Stopping Point. Purified products may be stored with beads at -20°C until ready to sequence. When taking the library out for QC and sequencing, vortex briefly and place the tubes or plate on a magnetic rack to pull the beads to one side. Avoid pipetting the beads, which will affect QC and sequencing.

Circularization

Please refer to the MGIEasy Circularization Kit User Manual for instructions on circularizing the templates for sequencing on MGI platforms.

Quality Control Prior to Sequencing

After library preparation, amplification of viral RNA can be visualized via electrophoresis. This can be accomplished with high sensitivity fragment analyzers such as Agilent® 2100 Bioanalyzer® Instrument and Agilent® High Sensitivity DNA Kit (Agilent, Part. No. 5067-4626). The presence of a peak at ~235 bp indicates successful amplification of the targeted regions. With sequencing, it can be confirmed that the viral RNA amplified is from the SARS-CoV-2 genome.

In addition to qualitative confirmation of amplified product, fragment analysis allows confirmation of the quality of the library produced. It is highly recommended that a high sensitivity fragment analyzer is used to visualize the peak shape, size, and potential background concentration to ensure library preparation was performed correctly prior to sequencing.

If qualitative confirmation is not required prior to sequencing, a fragment analysis is not necessary for high-throughput workflows after ensuring that high quality libraries with little nonspecific product can be consistently produced. The final library can also be quantified using a fluorometer such as Qubit™ with dsDNA HS Assay Kit (Thermo Fisher, Cat. No. Q32851 or Q32854) or using a qPCR method with MGI sequencing adapters. However, these methods will only give you the absolute yield and not differentiate potential background from the actual library.

An example of the expected library peak size and shapes can be found in the troubleshooting guide at the end of this user guide.

After confirmation of library quality, the libraries can be normalized using library peak concentrations, not including the nonspecific product(s) concentration(s). Then, samples with unique index combinations can be pooled for sequencing.

Recommended Sequencing Length and Depth

All CleanPlex Ready-to-Use NGS Panels are designed to be compatible with PE100 or PE100 reads.

Recommended Sequencing Depth		
Panel	Application	Average Read Depth
CleanPlex for MGI SARS-CoV-2 Panel	strain identification	< 1,000X
	co-infection, mutation analysis, other in-depth applications	1,000X

For additional information, refer to the panel-specific product sheet available for download on the product document page: https://www.paragongenomics.com/product_documents/

Supporting Information

CleanPlex for MGI Single-Indexed PCR Primers

Primer Sequences

Each sample is indexed by a pair of Indexed PCR Primers for sequencing on DNBSEQ platforms. XXXXXXXXXX denotes the index region of the primer. Index sequences are listed below.

Universal primer

5'-Phos-GAACGACATGGCTACGATCCGACT*T-3'

Single- Indexed Primer

5'-TGTGAGCCAAGGAGTTGXXXXXXXXXXTTGTCTTCCTAAGACCGCTTGGCCTCCGACT*T-3'

Indexed Primers

CleanPlex for MGI Single-Indexed PCR Primers Set A			CleanPlex for MGI Single-Indexed PCR Primers Set B		
16 indexes, 32 reactions (SKU 318001)			16 indexes, 32 reactions (SKU 318002)		
16 indexes, 96 reactions (SKU 318007)			16 indexes, 96 reactions (SKU 318008)		
Index	Bases for Sample Sheet	Index Sequence	Index	Bases for Sample Sheet	Index Sequence
Barcode 1	TAGGTCCGAT	ATCGGACCTA	Barcode 35	GTTCGCTCTA	TAGAGCGAAC
Barcode 2	GGACGGAATC	GATTCCGTCC	Barcode 36	TCTCACACAT	ATGTGTGAGA
Barcode 3	CTTACTGCCG	CGGCAGTAAG	Barcode 37	CTGTTAGGAT	ATCCTAACAG
Barcode 4	ACCTAATTGA	TCAATTAGGT	Barcode 38	CGCAGACGCG	CGCGTCTGCG
Barcode 13	CGGCAATCCG	CGGATTGCCG	Barcode 39	AAGGATCATC	GATGATCCTT
Barcode 14	ATCAGGATTC	GAATCCTGAT	Barcode 41	TTAGATGCAT	ATGCATCTAA
Barcode 15	TCATTCCAGA	TCTGGAATGA	Barcode 42	GTCCAGAGCT	AGCTCTGGAC
Barcode 16	GATGCTGGAT	ATCCAGCATC	Barcode 43	CACGTGATAG	CTATCACGTG
Barcode 25	TAGAGGACAA	TTGTCCTCTA	Barcode 44	CCACTAGTCC	GGACTAGTGG
Barcode 26	CCTAGCGAAT	ATTCGCTAGG	Barcode 45	TGGACTTGGC	GCCAAGTCCA
Barcode 28	GCTGAGCTGT	ACAGCTCAGC	Barcode 46	GCTTGACAGG	CCTGTCAAGC
Barcode 29	AACCTAGATA	TATCTAGGTT	Barcode 47	AAGACCTCTA	TAGAGGTCTT
Barcode 30	TTGCCATCTC	GAGATGGCAA	Barcode 48	AGTTGCCATA	TATGGCAACT
Barcode 32	CGCTATCGGC	GCCGATAGCG	Barcode 49	ATGTACGCAG	CTGCGTACAT
Barcode 33	GCAACGATGG	CCATCGTTGC	Barcode 50	TTAATGAGAT	ATCTCATTAA
Barcode 34	TAATCGTTCA	TGAACGATTA	Barcode 51	TGCGCCACTT	AAGTGGCGCA

**CleanPlex for MGI Single-Indexed PCR Primers
Set C**

16 indexes, 32 reactions (SKU 318003)
16 indexes, 96 reactions (SKU 318009)

Index	Bases for Sample Sheet	Index Sequence
Barcode 52	CATTAAGGCC	GGCCTTAATG
Barcode 53	CCGCCTCAGA	TCTGAGGCGG
Barcode 55	GCCGGTTATC	GATAACCGGC
Barcode 56	GGAATATTGA	TCAATATTCC
Barcode 57	ATTCAACGGA	TCCGTTGAAT
Barcode 58	AACTGTACTG	CAGTACAGTT
Barcode 59	GTACCTCAAT	ATTGAGGTAC
Barcode 60	GACTTCTAAT	ATTAGAAGTC
Barcode 61	TGAAGCGTTG	CAACGCTTCA
Barcode 62	CGTGCGATCC	GGATCGCACG
Barcode 63	TCGGAAGGCA	TGCCTTCCGA
Barcode 64	CCGATGTCGC	GCGACATCGG
Barcode 65	ACTTAGAATG	CATTCTAAGT
Barcode 66	TCCAAGCCTG	CAGGCTTGGA
Barcode 67	AGACGATGAT	ATCATCGTCT
Barcode 68	CTCACAAGAC	GTCTTGTGAG

**CleanPlex for MGI Single-Indexed PCR Primers
Set D**

16 indexes, 32 reactions (SKU 318004)
16 indexes, 96 reactions (SKU 318010)

Index	Bases for Sample Sheet	Index Sequence
Barcode 69	CGTTCCTACT	AGTAGGAACG
Barcode 70	GTGGTTGTGA	TCACAACCAC
Barcode 71	GAAGGCCTGC	GCAGGCCTTC
Barcode 72	TAGCTTGCCA	TGGCAAGCTA
Barcode 73	GACAATGCTC	GAGCATTGTC
Barcode 74	GCTAATCACA	TGTGATTAGC
Barcode 75	AGTCCATAGG	CCTATGGACT
Barcode 76	CTATCGCCTA	TAGGCGATAG
Barcode 77	ATCGTGGTCT	AGACCACGAT
Barcode 78	TGGCTAATAC	GTATTAGCCA
Barcode 79	CAGTGCAGAG	CTCTGCACTG
Barcode 80	TCAGGCTGGT	ACCAGCCTGA
Barcode 81	ATACTCACGC	GCGTGAGTAT
Barcode 82	ATGCTCCGCG	CGCGGAGCAT
Barcode 83	TGTGAACTTG	CAAGTTCACA
Barcode 84	GAGAGGTGCT	AGCACCTCTC

**CleanPlex for MGI Single-Indexed PCR Primers
Set E**

16 indexes, 32 reactions (SKU 318005)
16 indexes, 96 reactions (SKU 318011)

Index	Bases for Sample Sheet	Index Sequence
Barcode 85	TGCACTGTAA	TTACAGTGCA
Barcode 86	GCCTAGGCAA	TTGCCTAGGC
Barcode 87	CCATCATAGC	GCTATGATGG
Barcode 88	CATGGTAATT	AATTACCATG
Barcode 89	CACCATGTCT	AGACATGGTG
Barcode 90	ATATGTCTGG	CCAGACATAT
Barcode 91	AAGGAAGCGT	ACGCTTCCTT
Barcode 92	TCAAGACGTC	GACGTCTTGA
Barcode 93	CCGCTCAGTA	TACTGAGCGG
Barcode 94	GGTGTGTACA	TGTACACACC
Barcode 95	TTCACGTAAG	CTTACGTGAA
Barcode 96	GGTTCCACAC	GTGTGGAACC
Barcode 97	AGGTATTCTT	AAGAATACCT
Barcode 98	CGAATGCAAC	GTTGCATTCG
Barcode 99	TTCAACGGCG	CGCCGTTGAA
Barcode 100	CTCGGCGGAA	TTCCGCCGAG

**CleanPlex for MGI Single-Indexed PCR Primers
Set F**

16 indexes, 32 reactions (SKU 318006)
16 indexes, 96 reactions (SKU 318012)

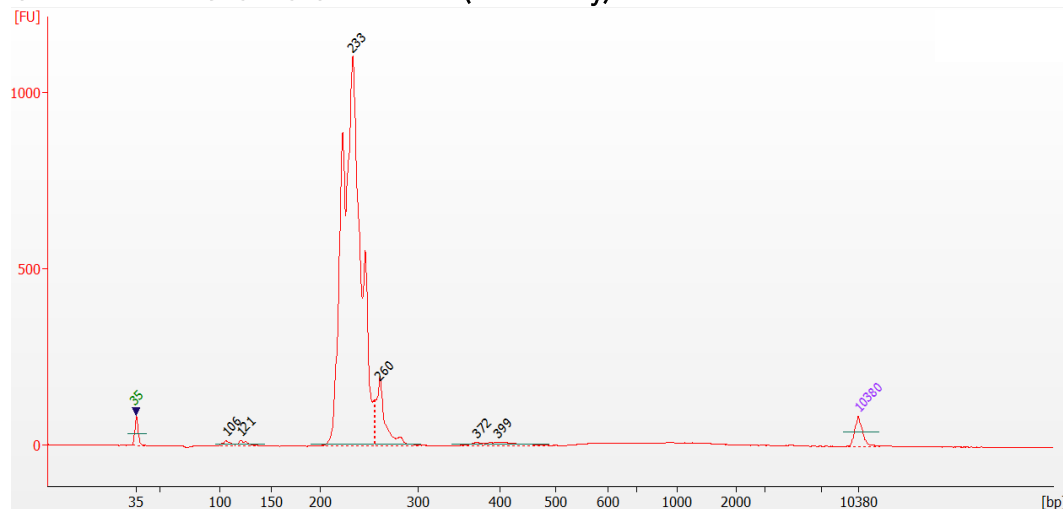
Index	Bases for Sample Sheet	Index Sequence
Barcode 101	ACGGTAATGG	CCATTACCGT
Barcode 102	GATCCGACGT	ACGTCGGATC
Barcode 103	TCACGATACA	TGTATCGTGA
Barcode 104	GATTCTCTTC	GAAGAGAATC
Barcode 114	CCAGAGTCAG	CTGACTCTGG
Barcode 115	AACAGGCAGT	ACTGCCTGTT
Barcode 116	GCTCCATGAC	GTCATGGAGC
Barcode 117	ATGTCTATCC	GGATAGACAT
Barcode 121	CCTTGATCAA	TTGATCAAGG
Barcode 122	GGAAGTGGCA	TGCCACTTCC
Barcode 123	AACATTCTAC	GTAGAATGTT
Barcode 124	GACGCGAGTC	GACTCGCGTC
Barcode 125	CTATAACACT	AGTGTATATAG
Barcode 126	AGTCTCGTGT	ACACGAGACT
Barcode 127	TCGGCCTATG	CATAGGCCGA
Barcode 128	TTGCAGACGG	CCGTCTGCAA

Troubleshooting Guide

Examples of Libraries Prepared with CleanPlex for MGI SARS-CoV-2 Panel

Depending on the workflow and fragment analyzer used, the CleanPlex for MGI SARS-CoV-2 Panel library peak should be between 200 and 300 bp. Below is a representative Agilent® 2100 Bioanalyzer® trace generated using SARS-CoV-2 Panel with Pool 1.

CleanPlex for MGI SARS-CoV-2 Panel (Pool 1 only)



Potential Causes for Extra Peaks and Suggested Solutions

Peaks around 70–90 bp are index primer dimers from the Second PCR Reaction and result from incomplete removal of low molecular weight DNA fragments during the final magnetic bead purification (Post-Second PCR Purification). When these peaks are high, it usually indicates one or more of the following:

- Inaccurate pipetting of magnetic beads when making a large number of libraries in a short period of time.
- Insufficient removal of supernatant and/or ethanol washes during the last purification.
- Adding more than specified amount of indexed primers to Second PCR Reaction Primer.

Peaks around 150–190 bp are nonspecific amplification products and adapter dimers. They come from incomplete removal of nonspecific products formed during or after the Multiplex PCR (mPCR) Reaction due to deviation from protocol or high concentration of panel. Nonspecific amplification products are removed during magnetic bead purification. These peaks are usually caused by one or more of the following:

- Inaccurate pipetting of magnetic bead volume.
- Insufficient mixing of reaction solutions or bead and sample mixture.
- Insufficient removal of supernatant and ethanol washes during purification.
- Allowing mPCR products to sit for too long (and form nonspecific products) before purification.
- CleanPlex Custom NGS Panels may require panel titration for optimal performance. Often dimers will decrease by reducing the panel concentration in the mPCR Reaction Mixture.

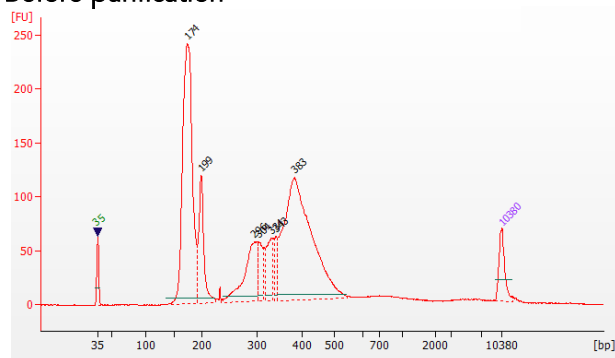
- Incorrect annealing time, specifically unnecessarily longer annealing time.
- Cross contamination of Pool 1 and Pool 2 primers in mPCR reactions.

Broad peaks spread across 500 – 10,000 bp range are nonspecific products due to overamplification. Double check that the correct mPCR and Second PCR cycle numbers were used. PCR cycles are determined based on the amplicon count per pool of your panel, RNA input amount, and RNA quality. Try reducing the Second PCR cycles by 2-3 cycles if issue persists. If you're working with a custom panel for organisms with a much smaller genome than human's, consider reducing the RNA input and Second PCR cycles accordingly.

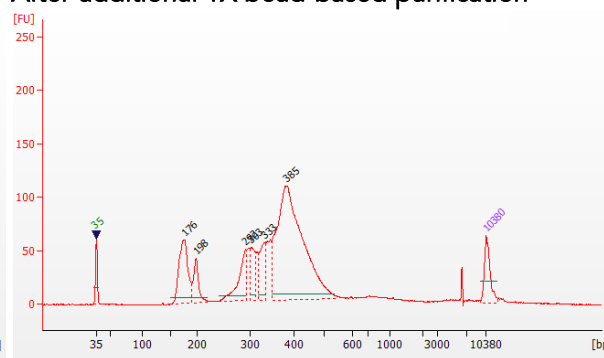
Removing nonspecific products from final libraries

If short nonspecific products described above are present in significant amounts, they can be reduced by pooling indexed libraries (that will be sequenced in the same lane) and performing one additional round of 1X magnetic bead-based purification if the pooled library **concentration is >3,000 pM** and the **total volume is >20 µL**. Low volume and low concentration libraries should not be bead-purified again as it will lead to significant loss of the library of interest. In the figures below, the Agilent® 2100 Bioanalyzer® trace on the left shows a CleanPlex Hereditary Cancer NGS library that contains significant adapter dimers due to poor library preparation. The Bioanalyzer trace on the right shows the same library after an additional 1X magnetic bead-based purification. The bead purification can be repeated once more if volume and concentration still meet the criteria above. We recommend keeping short adapter dimer peaks to less than 5% for best results. When possible it's always better to repeat the library preparation with the correct steps so nonspecific products do not form in the first place.

Before purification



After additional 1X bead-based purification



Potential Reasons for No Peaks

- 30% ethanol instead of 70% ethanol was used in DNA or cDNA purification with magnetic beads.
- Magnetic beads were not added for one or more of the purification steps.
- RNA input was too low due to incorrect quantification, try using more input RNA.
- RNA quality is extremely degraded. Try using more input RNA.
- Incompatible indexed PCR primers were using in the Second PCR Reaction. Only use CleanPlex Indexed PCR Primers for MGI with CleanPlex NGS Panels on DNBSEQ platforms.
- A weak or incompatible magnetic rack was used to perform magnetic bead purification, resulting in significant bead loss. Do **not** use magnetic racks designed for 1.5 ml tubes.

Additional Resources

Please visit www.paragongenomics.com/product/faq/ for additional troubleshooting resources.

Data Analysis Recommendations for MGI Sequencing Data

Paragon Genomics offers this panel of 343 amplicons covering 99.7% of the SARS-CoV-2 genome (MN908947/NC_045512.2) with 92 bases uncovered at the ends of the genome. The 343 amplicons are distributed into two pools. With amplicon size range from 116-196bp (median 149bp), the panel can be used for DNBSEQ PE100 or PE150. Below are some notes on data processing.

We recommend the Broad Institute's GATK Best Practice (<https://software.broadinstitute.org/gatk/best-practices/>) as general guiding principles for sequencing data analysis.

1. Adapter Trimming.

With amplicon size ranges from 116 to 196bp, it is recommended to trim leftover adapter sequences for PE150 sequencing (no need for PE100 sequencing) before read mapping.

Following is an example command with open source software cutadapt (<https://cutadapt.readthedocs.io/en/stable/>).

```
cutadapt -g GAACGACATGGCTACGATCCGACTT \  
-a AAGTCGGAGGCCAAGCGGTC \  
-A AAGTCGGATCGTAGCCATGTCGTTC \  
-G GACCGCTTGGCTCCGACTT \  
-e 0.1 -O 9 -m 20 -n 2 \  
-o R1_out.fq.gz -p R2_out.fq.gz R1_in.fq.gz R2_in.fq.gz \  
> cutadapt_report.output.txt
```

2. Map reads to reference genome.

The design was based on MN908947/NC_045512.2 and it is recommended to perform read mapping against the reference sequence of NC_045512.2. Bwa mem is recommended for read mapping and de-duplication procedure shall be skipped.

3. Trim primer sequences.

Before construction of a consensus genome sequence, it is recommended to remove primer sequences. Software package *fgbio* is recommended. It requires primer genomic coordinates in a tab delimited file which will be provided by Paragon Genomics to customers.

Following is an example command.

```
java -jar fgbio-1.2.0-e7ac607-SNAPSHOT.jar TrimPrimers -i input.bam -o  
output.primerTrim.bam -p primer_info.tab -H true
```

4. Calculate QC metrics.

In order to assess the quality of the sequencing results, it is recommended to assign mapped reads to amplicons based on mapping position. Subsequently, the following metrics can be used to measure general performance of the panel.

- **Mapping Rate:** Percentage of reads mapped to reference genome. It assesses primer-dimers and other PCR artifacts.
- **On-Target Rate:** Percentage of mapped reads that aligned to the targeted regions. It assesses binding/amplification specificity of designed primers.
- **Coverage Uniformity:** Percentage of amplicons with read depth equal to or greater than 20% of mean read depth of all amplicons in the panel. It measures performance uniformity of amplicons in the panel.

To accommodate the calculation, a file in BED format listing amplicon start and end coordinates will be provided to customers. The BED file can be downloaded from www.paragongenomics.com/product_documents/.

5. Downstream analysis.

Paragon Genomics would provide any required design files to be used in virus detection or strain identification. One software package we tested is Apollo from Shannon Genomics. It takes in raw FASTQ files and enables rapid metagenomics-based pathogen screening.

Following are the details to access Apollo demo account:

URL: <https://test.atlas-os.org/login>

Username: ApolloFreePublic

Password: darenjiyin2019!

Technical Support

For technical assistance, please contact Paragon Genomics Technical Support.

Phone: 650-822-7545

Email: techsupport@paragongenomics.com

Website: www.paragongenomics.com

Paragon Genomics

3521 Investment Blvd, Ste 1

Hayward, CA 94545 USA

1-510-363-9918

contact@paragongenomics.com

www.paragongenomics.com

© 2020 Paragon Genomics, Inc. All rights reserved.