

Instructions for use

epT.I.P.S.® – General Lab Product
English (EN)

1 Product description

The pipette tips are single-use pipette tips for aspirating and dispensing liquids with air cushion pipettes. The packing of the pipette tips is color-coded and corresponds to the color of the control button of the respective Eppendorf pipette.

2 Materials



NOTICE! Aggressive substances may damage components, consumables and accessories.

- ▶ Check the chemical resistance before using organic solvents or aggressive chemicals.
- ▶ Only use liquids whose vapors do not attack the materials used.

Component	Material
Pipette tip	Polypropylene (PP)
Tray	Polypropylene (PP)
Box, lid	Polycarbonate (PC)
Box, lower part	Polycarbonate (PC)
Rack	Polypropylene (PP)

3 Warnings for intended use



WARNING! Damage to health due to toxic, radioactive or aggressive chemicals.

- ▶ Wear your personal protective equipment.
- ▶ Observe the national regulations for handling these substances.
- ▶ Observe the material safety data sheets and manufacturer's application notes.



NOTICE! Carry-over, contamination and incorrect dispensing results due to the incorrect use of pipette tips.

The pipette tips are for single use only. Prolonged use can have a negative impact on dispensing tasks.




- ▶ Only use the pipette tips once.

4 Intended use

Pipette tips belonging to product group epT.I.P.S. with the corresponding product numbers are designed and constructed for low-contamination transfer of liquids. In vitro diagnostic applications (applications in or on the human body) are not permitted. Pipette tips are intended for single use only and for use by qualified personnel only.

5 Operation

Observe the descriptions in the operating manual of the pipette used.

-  Only use visually perfect and undamaged pipette tips. If the packing is damaged, do not use the pipette tips.
-  Do not use filter tips without a filter or with an incorrectly inserted filter. Do not suck liquid into the filter.
-  Depending on the pipetting volume, using extra long pipette tips may have a negative effect on the dispensing accuracy and trueness in comparison with normal-length pipette tips.

For the following pipette tips, the adjustment has to be adapted:

- epT.I.P.S. 50 – 1250 µL L, dark green, 103 mm
- epT.I.P.S. 0.2 – 5 mL L, violet, 175 mm
- epT.I.P.S. 0.5 – 10 mL L, turquoise, 243 mm

To adjust your pipette when using extra long pipette tips, refer to its operating manual.

6 Autoclaving pipette tips



NOTICE! Material damage due to autoclaving in packaging foil.

Pipette tips, racks and reloads are damaged and deformed if they are autoclaved in their packaging.

- ▶ Remove the packaging foil before autoclaving.



Do not use any additional disinfectants before autoclaving the boxes and racks.

Product	Temperature [°C]	Overpressure [bar]	Time [min]	Number of possible cycles
epT.I.P.S.	121	1	20	1
epT.I.P.S. 384	121	1	20	1
epT.I.P.S. LoRetention	121	1	20	1
epT.I.P.S. Reloads	121	1	20	1
epT.I.P.S. Racks	121	1	20	10
epT.I.P.S. Box	121	1	20	100
ep Dualfilter T.I.P.S. ep Dualfilter T.I.P.S. LoRetention ep Dualfilter T.I.P.S. SealMax ep Dualfilter T.I.P.S. 384	Not autoclavable.			

7 Transport, storage and disposal

7.1 Transport

	Air temperature	Relative humidity	Atmospheric pressure
In transport packing	-25 °C – 55 °C	10 % – 95 %	70 kPa – 106 kPa

7.2 Storage







Store dry at room temperature. Protect from sunlight and UV rays.

7.3 Disposal

Dispose of the packing in accordance with the marking and comply with the legal regulations.

4 **Instructions for use**
epT.I.P.S.® – General Lab Product
English (EN)

8 Purity grades and certificates
8.1 Eppendorf purity grades

	Eppendorf Quality	Sterile	PCR clean	Sterile + PCR clean	Biopur	Forensic DNA Grade
						
Batch testing (certified) for the following purity criteria						
Human DNA-free			■	■	■	■
DNA-free (free of human and bacterial DNA)					■	
DNase-free			■	■	■	■
RNase-free			■	■	■	■
PCR inhibitor-free			■	■	■	■
ATP-free					■	
Pyrogen-free (endotoxin-free)		■		■	■	
Sterile (Ph.Eur./USP)		■		■	■	
epT.I.P.S.						
epT.I.P.S. Standard						
epT.I.P.S. Box	■					
epT.I.P.S. Set						
epT.I.P.S. Reloads	■		■			
epT.I.P.S. Racks		■			■	
epT.I.P.S. Singles					■	
ep Dualfilter T.I.P.S.				■		■
epT.I.P.S. LoRetention	■		■	■		
ep Dualfilter T.I.P.S. LoRetention				■		
ep Dualfilter T.I.P.S. SealMax				■		
epT.I.P.S. 384						
epT.I.P.S. 384 Set	■					
epT.I.P.S. 384 Reloads	■		■			
ep Dualfilter T.I.P.S. 384				■		

8.2 Certificates

There are two different categories of certificates for Eppendorf Liquid Handling consumables:

Batch-specific certificates are prepared for the following purity grades:

- Biopur
- Forensic DNA Grade
- PCR clean
- PCR clean and Sterile
- Sterile

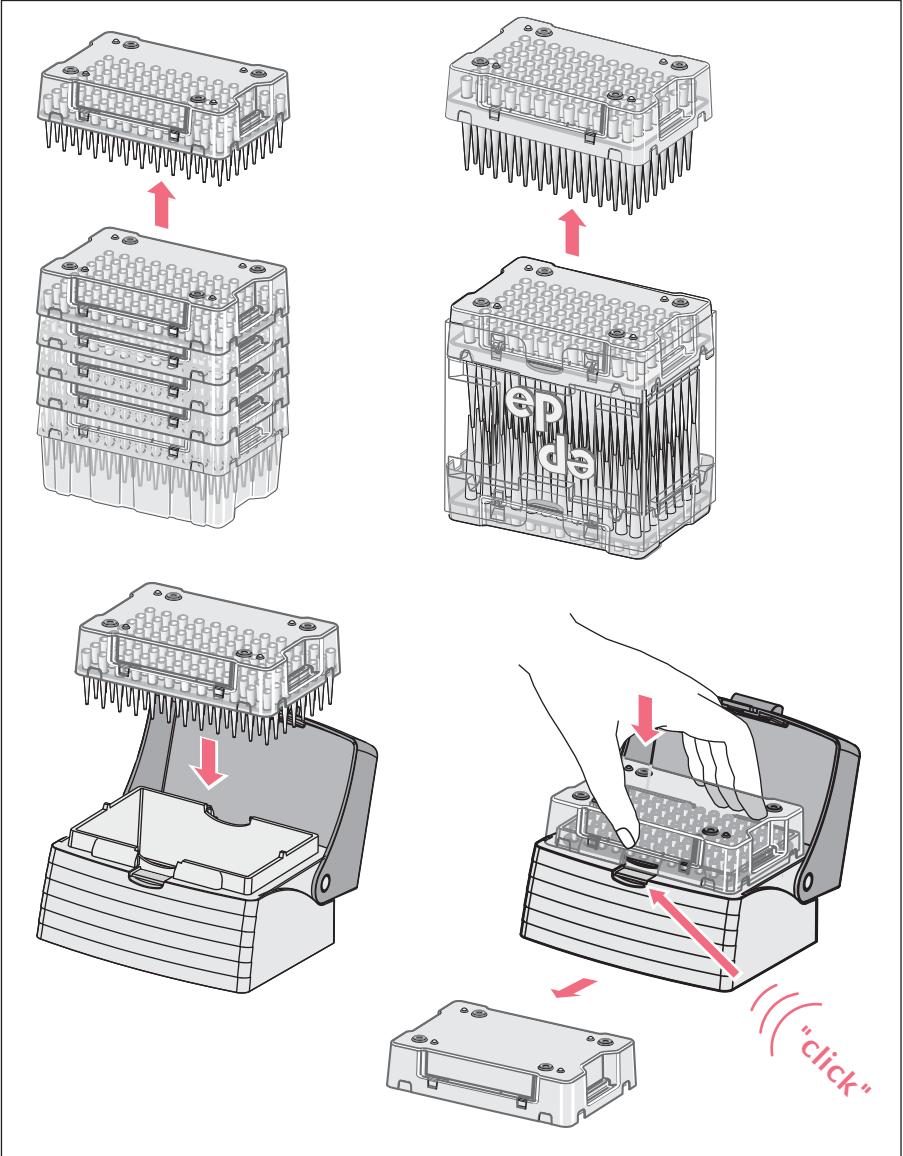
General certificates of conformity:

- Certificate of conformity for products with the purity grade Biopur (Certificate of Quality/Conformity – Biopur).
- Certificate of conformity for products with the purity grade Forensic DNA Grade (Certificate of Purity – Eppendorf Forensic DNA Grade according to ISO 18385).
- Certificate of conformity for products with the purity grade PCR clean (Certificate of Purity – PCR clean).
- Certificate of conformity regarding trace metal (Certificate of Quality – epT.I.P.S. – Typical values for trace metal).
- Certificate of conformity regarding surface active additives (Certificate of Quality epT.I.P.S. and ep Dualfilter T.I.P.S. Quality Assurance).
- Certificate of conformity regarding the material composition and adherence to the error of measurement of pipette tips (Certificate of Quality/Conformity – epT.I.P.S. Dualfilter, LoRetention, SealMax).
- Certificate of conformity regarding the plastic granulates used (Certificate of Quality/Conformity – Laboratory Consumables).
- Certificate of conformity regarding the filters used (Certificate of Quality/Conformity – ep Dualfilter T.I.P.S. – EPA/HEPA).

All certificates can be downloaded from our website www.eppendorf.com/certificates.

Instructions for use
epT.I.P.S.® – General Lab Product
English (EN)

9 Refilling boxes with reloads



Your local distributor: www.eppendorf.com/contact
Eppendorf AG · Barkhausenweg 1 · 22339 Hamburg · Germany
eppendorf@eppendorf.com · www.eppendorf.com